

# U.S. PUBLIC LAND SURVEY MONUMENT RECORD

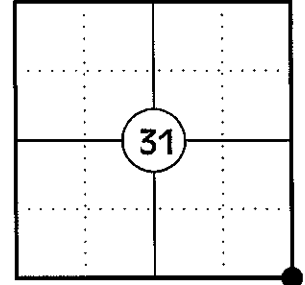
NOTE: THIS FORM IS INTENDED AND DESIGNED TO FULFILL ALL REQUIREMENTS OF WISCONSIN ADMINISTRATIVE CODE CHAPTER A-E 7.08 U.S. PUBLIC LAND SURVEY MONUMENT RECORD (3) (a)(b)(c)(d)(e)(f)(g)(h)(i). AN ADDITIONAL SHEET MAY BE ADDED IF NECESSARY TO CONFIRM WITH SAID REQUIREMENTS.

**(a) CORNER LOCATION:**

SOUTHEAST CORNER OF SECTION 31  
 TOWNSHIP 34 NORTH  
 RANGE 5 EAST  
 TOWN OF TOMAHAWK  
 COUNTY OF LINCOLN

**LINCOLN COUNTY COORDINATES:**

N: 195851.11  
 E: 338586.47



**(b) HISTORY OF ORIGINAL CORNER:**

ORIGINAL SURVEYOR: JAMES M. MARSH  
 DATE OF SURVEY: AUG. 1851

ORIGINAL BEARING TREES: 10" BIRCH - S56°E, 57 LKS  
 15" BIRCH - S78°W, 52 LKS  
 10" HEMLOCK - N80°W, 42 LKS  
 10" BIRCH - N67°E, 17 LKS

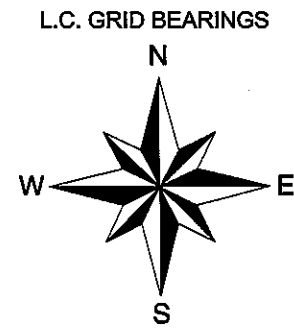
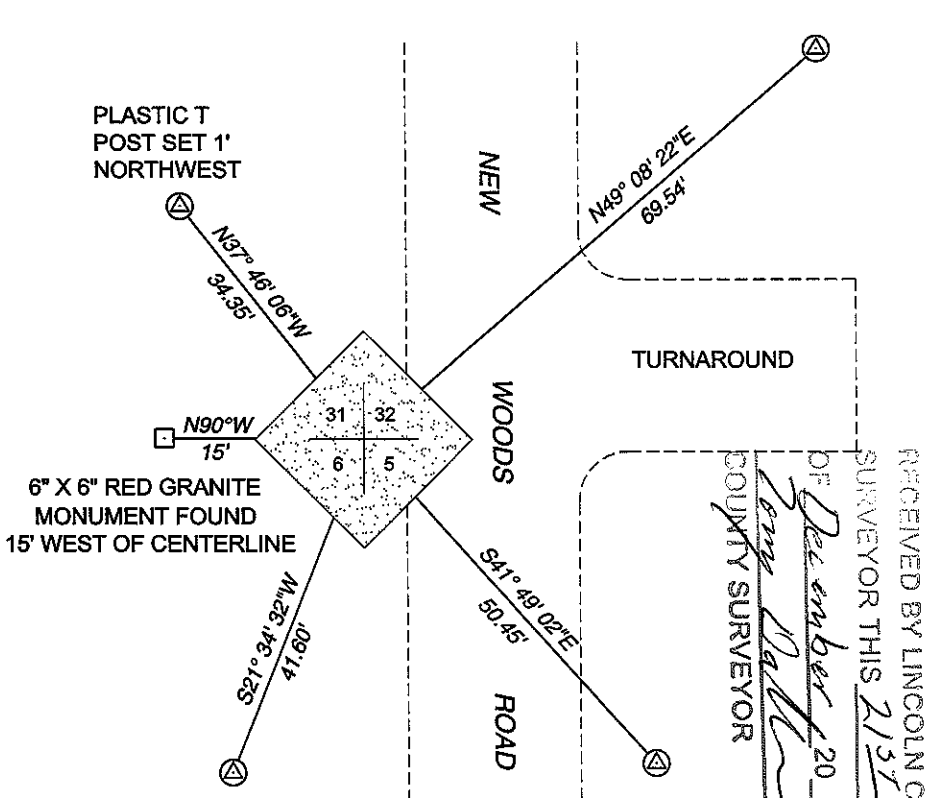
**(f)(g)(h) DESCRIPTION OF MONUMENT FOUND AT THIS CORNER AND IF IT WAS ACCEPTED STATE ALL EVIDENCE (MATERIAL, TESTIMONIAL, OCCUPATIONAL, PLATS, RECORDS, OTHER MONUMENTS) USED AS A BASIS FOR ESTABLISHING LOCATION. IF REESTABLISHING THROUGH LOST CORNER PROPORTIONATE METHODS, INDICATE ALL MONUMENTS, DISTANCES, AND DIRECTIONS USED TO ESTABLISH. INDICATE TYPE OF MONUMENT AND SIGN POST FOUND OR SET.**

1851: JAMES M. MARSH SET THE ORIGINAL SECTION CORNER POST.

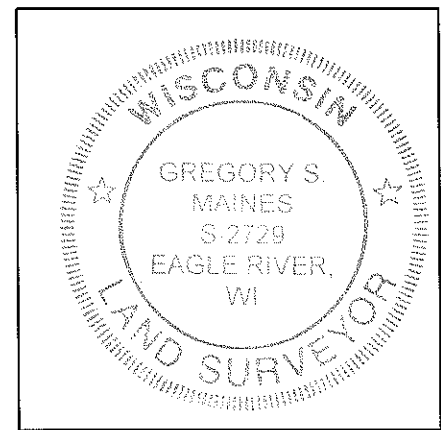
1930'S: FRANCIS FOX SET STONE IN WEST DITCH LINE OF ROAD . HE WITNESSES A 20" PINE STUMP N71°E, 44.3' , A LOCATION POST 15' WEST AND THE DITCH OF AN OLD RAILROAD GRADE 18' WEST.

11/12/2012: I EXCAVATED AT THE CORNER LOCATION WITH THE LINCOLN COUNTY HIGHWAY DEPARTMENT AND FOUND A 6" X 6" RED GRANITE MONUMENT 15 FEET WEST OF THE CENTERLINE OF NEW WOODS ROAD AND 12" BELOW GRADE. I ALSO FOUND A WOOD POST 15 FEET WEST OF GRANITE MONUMENT. I ACCEPTED THE MONUMENT AS THE CORNER AND SET FOUR REFERENCE MONUMENTS TO WITNESS THE CORNER.

**(c)(d)(e) PLAN VIEW OF CORNER WITH TIES TO AT LEAST FOUR WITNESSES. IF IN DISAGREEMENT WITH PREVIOUSLY ESTABLISHED CORNER, SHOW THE DISTANCES BETWEEN THE TWO CORNERS AND ALSO INDICATE THE TIE TO THE DISPUTED CORNER.**



RECEIVED BY LINCOLN COUNTY SURVEYOR THIS 21<sup>ST</sup> DAY OF December 20 12  
 COUNTY SURVEYOR  
 SKETCH IS NOT TO SCALE  
 DISTANCES TO BT'S ARE TO NAIL IN SIDE



INDEX NO. 1-5

**CERTIFICATION**

I GREGORY S. MAINES, REGISTERED LAND SURVEYOR NO. 2729, HEREBY CERTIFY THAT THE CORNER LOCATION ON THIS RECORD WAS REFERENCED BY ME OR UNDER MY DIRECTION AND CONTROL AND THAT THIS U.S. PUBLIC LAND SURVEY MONUMENT RECORD IS COMPLETE TO THE BEST OF MY KNOWLEDGE AND BELIEF.

*Gregory S. Maines*  
 SIGNATURE