

U S PUBLIC LAND SURVEY MONUMENT RECORD

NOTE: This form is intended and designed to fulfill all requirements of Wisconsin Administrative Code, Chapter A-E 7.08 U.S. Public Land Survey Monument Record (3) (a-i)

A-E 7.08(3)(a) Identity of corner:
 SOUTHEAST CORNER SECTION 25,
 TOWNSHIP 34 NORTH,
 RANGE 05 EAST OF THE 4TH PM,
 TOWN OF TOMAHAWK,
 COUNTY OF LINCOLN

WISCRS - LINCOLN COUNTY
 N: 200,966.533 USft (200,966.378)
 E: 364,942.709 USft (364,942.729)
 Datum: NAD83 (2011)
 GNSS Method RTN - Direct
 GNSS Control WISCORS VRS



The coordinate value shown has been verified by the average of two or more GPS observations at a markedly different time. Coordinates shown in parenthesis are provided by Lincoln County.

A-E 7.08(3)(b)

Original Surveyor: James M. Marsh

Date of Original Survey	Commenced:	August 12, 1851	Original Accessories:			
	Completed:	August 18, 1851	Spruce	6	S 45° E	42 Links
			Spruce	6	S 5° W	52 Links

January 8, 2002 - Surveyor 2095 - Thomas A. Radenz:

indicates this position as "To be set by County Surveyor - N200966.3790, E364942.729" on Section Summary - Section 30 & 31 Township 34N, Range 6E.

October 17, 2005 - Surveyor 2142 - David A. Renaud - indicates this position as "N200966.3790, E364942.729" on Map L403A & L405B.

December 20, 2012 - Surveyor 2729 - Gregory S. Maines

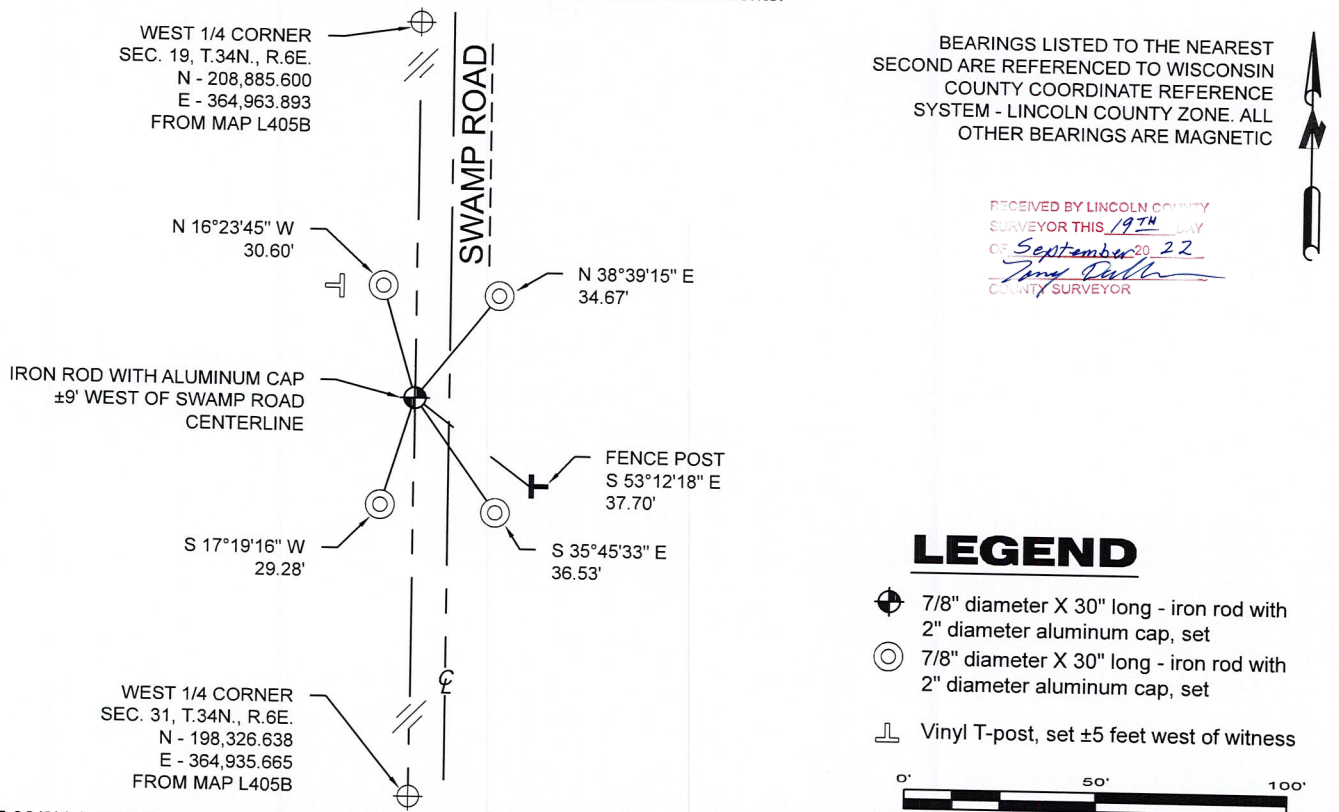
indicates this position as "coordinates provided by Lincoln County" on Map L492A-B.

indicates this position as "coordinates provided by Lincoln County - N200966.38, E364942.73" on Section Summary - Section 25 & 36 T 34 N, R 5 E.

July 19, 2022 - While performing the 2022 Lincoln County PLSS Corner Remonumentation and GPS Services project, I went to the coordinate position provided by Lincoln County, I made a careful search of the area and found no evidence of the corner or witnesses. The County provided location is ±9 feet west of the Swamp Road centerline.

Under the direction of Lincoln County, I restored the corner using coordinates provided by Lincoln County and set a 7/8" diameter X 30" long - iron rod with 2" diameter aluminum cap. I established 4 new reference monuments as shown below.

A-E 7.08(3)(c)(d) Plan view of corner with references to at least 4 witness monuments.



A-E 7.08(3)(e) 1851 Surveyor set a post, 2002, 2005, and 2012 Surveyors had coordinates. I set an 7/8" diameter iron rod with 2" diameter aluminum cap at coordinates provided by Lincoln County.

A-E 7.08(3)(f) This corner was not restored through acceptance of an obliterated location or a found perpetuated location.

A-E 7.08(3)(g)(h) The position of this corner was determined through LOST-CORNER-PROPORTIONATE METHODS, calculations by others, corner position provided by Lincoln County.

A-E 7.08(3)(i) I, Jeffrey L. DeMuth, Professional Land Surveyor No. S-2656, hereby certify that the corner location on this record was determined by the Lincoln County Surveyor, and the monuments found or set as shown hereon were measured by me or under my direction and control, and that this U.S. Public Land Survey Monument Record is correct and complete to the best of my knowledge, and belief.



SIGNATURE

September 16, 2022

DATE

REPORT

2022-Lincoln County PLSS Corner Remonumentation and GPS Services

Wisconsin Corner Point Identification Number: 43405250000

Surveyor: Jeffrey L. DeMuth – S2656

Corner monument: Set 7/8" diameter X 30" long iron rod, with 2" diameter aluminum cap at coordinates provided.

Field Book: Cardinal North – Lincoln Co. Remon. – 2022-00

Page: 24

Horizontal Datum: WisCRS – Lincoln County Zone – NAD83(2011)

Date / time of initial measurement:

July 19, 2022 - Start 14:23:24 CDT – End 14:36:23 CDT

Reference monuments:

4 – Set - 7/8" diameter X 30" long iron rods with 2" diameter Lincoln Co. aluminum cap.

1 – Found – steel fence post with pink tape wrapped around the top.

Coordinate Table

	County Provided	2022 Measurement	Difference
North	200966.378	200966.533	-0.15
East	364942.729	364942.709	0.02

Established coordinates match existing calculated coordinates within reason.

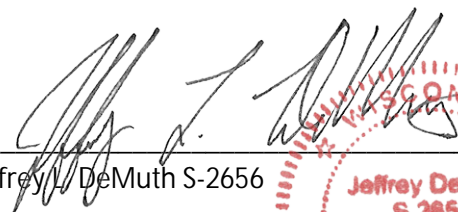
Request Data Log for more information.

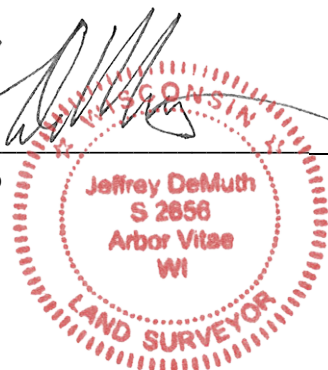
Additional Notes:

Corner falls $\pm 9'$ west of Swamp Road centerline and is $\pm 8"$ below the road grade. There is a cut line heading west from the corner, and a trail heading east from the corner.

Email from County Surveyor indicates the position was determined by REI who "proportioned between the West 1/4 corner of Section 19, T. 34N., R.6E., and the West 1/4 corner of Section 19, T. 31N., R.6E."

Road base is corduroy, County Surveyor allowed a rod for corner monument.


 Jeffrey L. DeMuth S-2656
 September 16, 2022
Date



43405250000_Mon-N



43405250000_North



43405250000_West



43405250000_South



4340525000_East

