

# U S PUBLIC LAND SURVEY MONUMENT RECORD

NOTE: This form is intended and designed to fulfill all requirements of Wisconsin Administrative Code, Chapter A-E 7.08 U.S. Public Land Survey Monument Record (3) (a-i)

A-E 7.08(3)(a) Identity of corner:  
 EAST 1/4 CORNER SECTION 24,  
 TOWNSHIP 34 NORTH,  
 RANGE 05 EAST OF THE 4TH PM,  
 TOWN OF TOMAHAWK,  
 COUNTY OF LINCOLN

WISCRS - LINCOLN COUNTY  
 N: 208,885.617 USft (208,885.599)  
 E: 364,963.684 USft (364,963.893)  
 Datum: NAD83 (2011)  
 GNSS Method RTN - Direct  
 GNSS Control WISCORS VRS



The coordinate value shown has been verified by the average of two or more GPS observations at a markedly different time. Coordinates shown in parenthesis are provided by Lincoln County.

A-E 7.08(3)(b)

Original Surveyor: James M. Marsh

Date of Original Survey	Commenced:	August 12, 1851	Original Accessories:	
	Completed:	August 18, 1851	Spruce	7 S 30° E 7 Links
			Spruce	6 S 8° W 5 Links
			Spruce	6 N 20° W 5 Links
			Spruce	6 N 65° E 8 Links

January 8, 2002 - Surveyor 2095 - Thomas A. Radenz - indicates this position as "To be set by County Surveyor - N208885.6140, E364963.8930" on Section Summary - Section 19 Township 34N, Range 6E.

April 20, 2005 - Surveyor 1390 - David E. Tlusty - indicates this position as "aluminum capped rebar" on Map L391A.

October 17, 2005 - Surveyor 2142 - David A. Renaud - indicates this position as "N208885.6000, E364963.8930" on Map L403A & L405B.

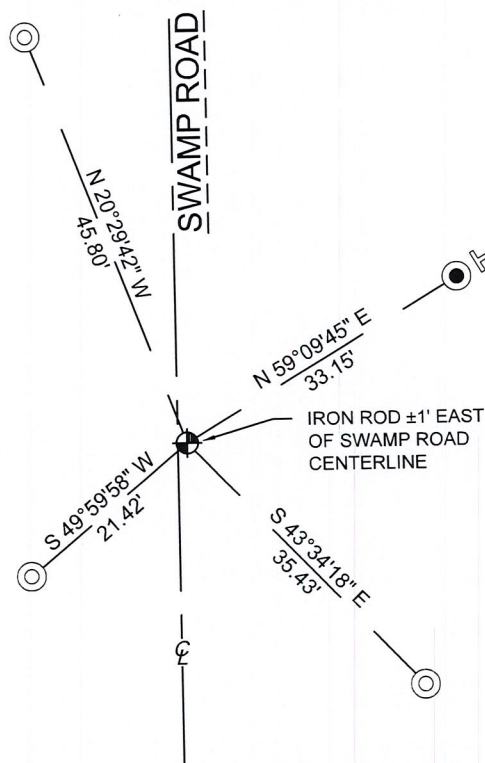
April 11, 2012 - Surveyor 1390 - David E. Tlusty - indicates this position as "aluminum capped rebar" on Map L491A.

December 20, 2012 - Surveyor 2729 - Gregory S. Maines - indicates this position as "corner position found" on Map L492A-B.

June 02, 2022 - While performing the 2022 Lincoln County PLSS Corner Remonumentation and GPS Services project, I found a 7/8" diameter x 30" long iron rod near the computed position provided by Lincoln County. The monument is ±1 feet, east of Swamp Road centerline, and ±8" below road grade. The top 12" of the rod were bent north, I replaced the rod in kind.

I also found 1 reference monument by others. I established 3 new reference monuments as shown below.

A-E 7.08(3)(c)(d) Plan view of corner with references to at least 4 witness monuments.

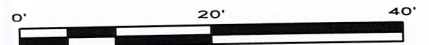


BEARINGS LISTED TO THE NEAREST SECOND ARE REFERENCED TO WISCONSIN COUNTY COORDINATE REFERENCE SYSTEM - LINCOLN COUNTY ZONE. ALL OTHER BEARINGS ARE MAGNETIC

RECEIVED BY LINCOLN COUNTY SURVEYOR THIS 19<sup>TH</sup> DAY OF September 20, 22  
 Jeffrey DeMuth  
 COUNTY SURVEYOR

## LEGEND

- 7/8" diameter X 30" long iron rod, found bent, replaced straight
- 7/8" diameter X 30" long - iron rod with 2" diameter aluminum cap, set
- 2" diameter aluminum cap, found
- Vinyl T-post, found ±1 foot NE of witness



A-E 7.08(3)(e) 1851 Surveyor set a post, 2005 & 2012 Surveyor found a capped rebar, 2012 Surveyor found "corner position". I found a bent 7/8" diameter x 30" long iron rod, and replaced in the same location, with a straight 7/8" diameter x 30" long iron rod.

A-E 7.08(3)(f) I accept this monument as a FOUND PERPETUATED LOCATION of the corner.

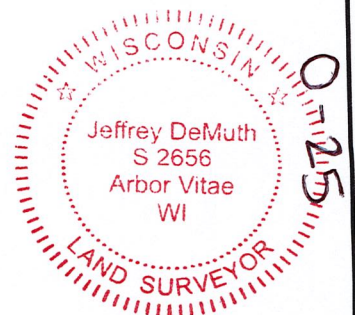
A-E 7.08(3)(g)(h) This corner was not determined through lost-corner-proportionate methods.

A-E 7.08(3)(i) I, Jeffrey L. DeMuth, Professional Land Surveyor No. S-2656, hereby certify that the corner location on this record was determined by the Lincoln County Surveyor, and the monuments found or set as shown hereon were measured by me or under my direction and control, and that this U.S. Public Land Survey Monument Record is correct and complete to the best of my knowledge, and belief.

SIGNATURE

September 16, 2022

DATE



## REPORT

### 2022-Lincoln County PLSS Corner Remonumentation and GPS Services

Wisconsin Corner Point Identification Number: 43405242000

Surveyor: Jeffrey L. DeMuth – S2656

Corner monument: Found 7/8" diameter X 30" long iron rod – top 12" bent to the north. I removed and replaced in kind.

Field Book: Cardinal North – Lincoln Co. Remon. – 2022-00

Page: 27

Horizontal Datum: WisCRS – Lincoln County Zone – NAD83(2011)

Date / time of initial measurement:

June 2, 2022 - Start 12:38:54 CDT – End 12:47:59 CDT

Reference monuments:

3 – Set - 7/8" diameter X 30" long iron rods with 2" diameter Lincoln Co. aluminum cap.

1 – Found – 7/8" diameter iron rods with 2" diameter Lincoln Co. aluminum cap.

#### Coordinate Table

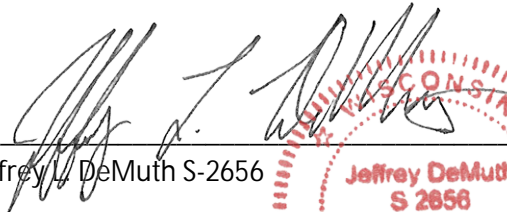
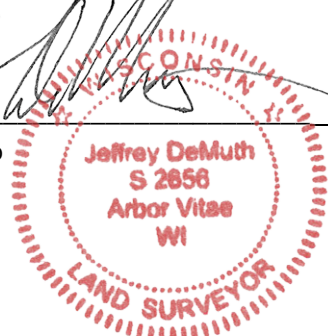
	County Provided	2022 Measurement	Difference
North	208885.599	208885.617	-0.02
East	364963.893	364963.684	0.21

Observed coordinates match existing calculated coordinates within reason.

Request Data Log for more information.

Additional Notes:

Corner falls ±1 feet east of Swamp Road centerline, and ±8" below road grade. There is a cut line heading east from the corner.

  
 Jeffrey L. DeMuth S-2656
 
 September 16, 2022  
 Date

43405242000\_Mon-N



43405242000\_North



43405242000\_West



43405242000\_South



43405242000\_East

