

# Attachment to Tie Sheet Q-23, T34N, R5E

43405240020

I visited the corner on 3/01/2019 to verify the corner and reference tie monumentation. I found the Berntsen Swamp Rod, up 1", and 4 of 6 ties from David Tlusty's tie sheet (04/27/2005), deep snow made it difficult to search for 2 of the aluminum nail references. The established Coordinates and 2 of the 4 ties agree with existing monument.

Northerly witness(Berntsen Swamp Rod) measures 75.55', shown as 70.91' on Tie Sheet.

Northwesterly witness measures 4.55', shown as 3.83' on Tie Sheet.

 4/03/19

Anthony R. Dallman, PLS-2405

Lincoln County Surveyor



# LINCOLN COUNTY U.S. PUBLIC LAND CORNER RESTORATION

The Quarter corner common to Sections 24 & 25, T. 34 N., R. 5 EW.

434053 0020

**Corner was: (check all that apply)**

- Restored through acceptance of an obliterated evidence location.
- Restored through acceptance of a found perpetuated location.
- Determined to be lost and re-established through proportionate methods.  
(Show bearings and distances to PLSS corners used for proportioning, and show original distances).
- Restored/recovered/re-established in a location that differs from a previously established position.  
(Show difference in plan view below).
- Check here if addition information is shown on the reverse side of this form.

**Describe record evidence, recovered physical evidence, occupational evidence, testimonial evidence and all other evidence considered in the recovery/restoration of the corner.**

The original corner was established in 1855 by Jackson L. Prentice. Original bearing trees: spruce, 8", N 38 E, 8 links and a spruce, 8" S 53° W, 25 links. Tony Dallman, Lincoln County Surveyor recently determined this corner was lost. I re-established this corner by single proportionate measurement between the SW and SE corners of Section 24 as shown below. Corner witnessed by adjoining landowner, David Seidler.

**Physical description of the monument set:**

For the corner, I set a 1" x 60" aluminum pipe monument with barbed point and aluminum cap, top of which is 0.6' above the swamp. Set a white vinyl sign post on the SE edge of the monument.

**Describe the accessories used to perpetuate the corner. Include a plan view drawing and accessories found/set. Describe measuring point on bearing trees. Show any topographic features that would aid in future recovery of the corner.**

**LEGEND**

- 1" x 36" aluminum pipe mon with alum. cap set
  - 1" x 60" aluminum pipe mon with alum. cap set
- Bearings shown are Lincoln County Coordinate System grid bearings.  
Grid az. + convergence angle = geodetic az.  
Convergence angle at center of project = (-0°03'07")  
Set white vinyl sign post at SE edge of corner monument.  
Corner is in mostly open black spruce swamp with 1" - 3" scattered black spruce and very few tamarac.

Set aluminum nail in low blaze on SE side of 8" tamarac with turtle blaze facing corner.

RECEIVED BY LINCOLN COUNTY  
SURVEYOR THIS 29<sup>TH</sup> DAY  
OF April 20 05  
*Tony Dall*  
COUNTY SURVEYOR

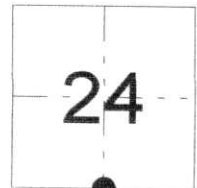
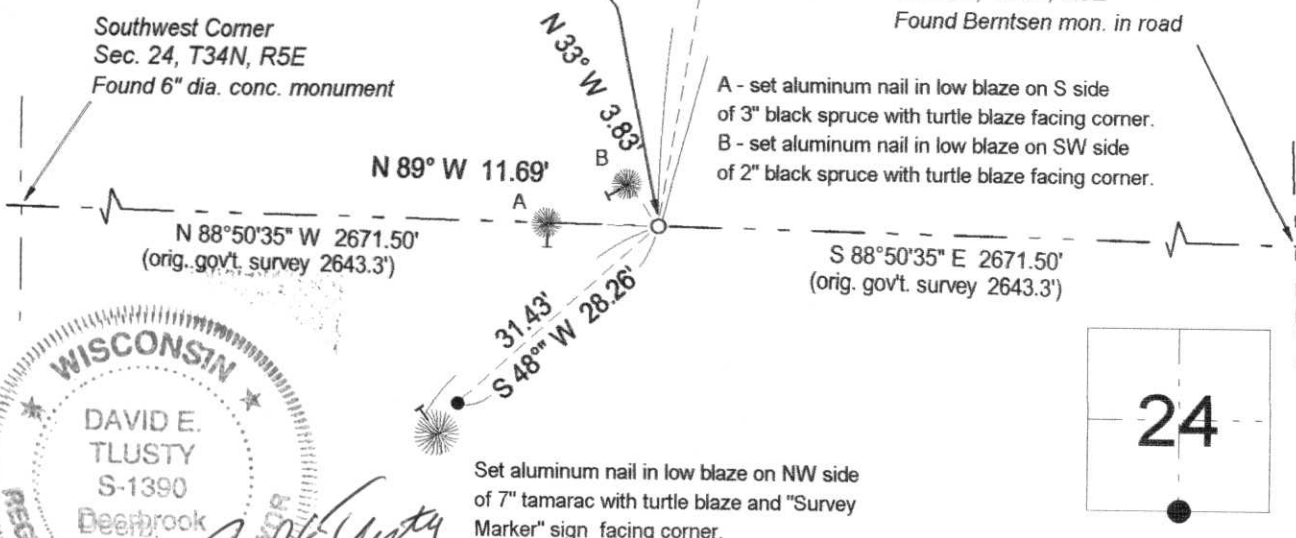


South 1/4 Corner  
Sec. 24, T34N, R5E  
Set 1" alum. rod mon.

Southeast Corner  
Sec. 24, T34N, R5E  
Found Berntsen mon. in road

Southwest Corner  
Sec. 24, T34N, R5E  
Found 6" dia. conc. monument

A - set aluminum nail in low blaze on S side of 3" black spruce with turtle blaze facing corner.  
B - set aluminum nail in low blaze on SW side of 2" black spruce with turtle blaze facing corner.



● = corner perpetuated

The South Quarter  
corner of Section 24,  
T. 34 N., R. 5 E.,  
Lincoln County, WI

WISCONSIN  
DAVID E. TLUSTY  
S-1390  
Deerbrook  
WI  
REGISTERED LAND SURVEYOR

*David E. Tlusty*  
4/27/05

I, David E. Tlusty, Wisconsin Registered Land Surveyor s-1390, certify that the corner location on this record was determined by me and that this U.S. Public Land Survey Monument Record is correct to the best of my knowledge and belief.

9-23