

U S PUBLIC LAND SURVEY MONUMENT RECORD

NOTE: This form is intended and designed to fulfill all requirements of Wisconsin Administrative Code, Chapter A-E 7.08 U.S. Public Land Survey Monument Record (3) (a-i)

A-E 7.08(3)(a) Identity of corner:
 SOUTHEAST CORNER SECTION 24,
 TOWNSHIP 34 NORTH,
 RANGE 05 EAST OF THE 4TH PM,
 TOWN OF TOMAHAWK,
 COUNTY OF LINCOLN

WISCRS - LINCOLN COUNTY
 N: 206,245.969 USft (206,245.870)
 E: 364,957.133 USft (364,956.859)
 Datum: NAD83 (2011)
 GNSS Method RTN - Direct
 GNSS Control WISCORS VRS



The coordinate value shown has been verified by the average of two or more GPS observations at a markedly different time. Coordinates shown in parenthesis are provided by Lincoln County.

A-E 7.08(3)(b)

Original Surveyor: James M. Marsh

Date of Original Survey Commenced: August 12, 1851
 Completed: August 18, 1851

Original Accessories:

Birch	12	S 45° E	8 Links
Birch	10	S 43° W	13 Links
Birch	8	N 42° W	37 Links
Maple	8	N 5° E	14 Links

January 8, 2002 - Surveyor 2095 - Thomas A. Radenz - indicates this position as "To be set by County Surveyor - N206245.8680, E364956.8580" on Section Summary - Section 19 Township 34N, Range 6E.

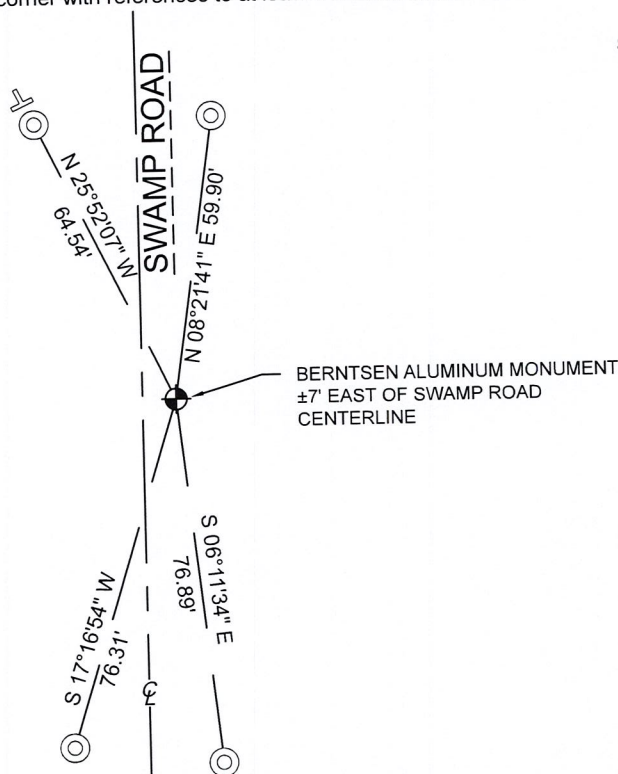
April 20, 2005 - Surveyor 1390 - David E. Tlusty - indicates this position as "aluminum Berntsen monument" on Map L391A.

October 17, 2005 - Surveyor 2142 - David A. Renaud - indicates this position as "N206245.8680, E364956.8580" on Map L403A & L405B.

December 20, 2012 - Surveyor 2729 - Gregory S. Maines
 indicates this position as "corner position found" on Map L492A-B.
 indicates this position as "coordinates provided by Lincoln County - N206245.87, E364956.86 on Section Summary - Section 25, T 34 N, R 5 E.

June 02, 2022 - While performing the 2022 Lincoln County PLSS Corner Remonumentation and GPS Services project, I found a Berntsen Cast aluminum monument, with a 4" diameter aluminum cap near the computed position provided by Lincoln County. The monument is ±7 feet, east of Swamp Road centerline, and 1" below road grade. I established 4 new reference monuments as shown below.

A-E 7.08(3)(c)(d) Plan view of corner with references to at least 4 witness monuments.

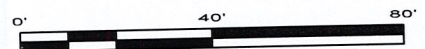


BEARINGS LISTED TO THE NEAREST SECOND ARE REFERENCED TO WISCONSIN COUNTY COORDINATE REFERENCE SYSTEM - LINCOLN COUNTY ZONE. ALL OTHER BEARINGS ARE MAGNETIC

RECEIVED BY LINCOLN COUNTY SURVEYOR THIS 19TH DAY OF September 20, 22
 Jeffrey DeMuth
 COUNTY SURVEYOR

LEGEND

- Berntsen cast aluminum monument, found
- 7/8" diameter X 30" long - iron rod with 2" diameter aluminum cap, set
- Vinyl T-post, set ±1 foot NW of witness



A-E 7.08(3)(e) 1851 Surveyor set a post, 2005 Surveyor found a monument, 2012 Surveyor found "corner position". I found a Berntsen cast aluminum monument with a 4" diameter aluminum cap.

A-E 7.08(3)(f) I accept this monument as a FOUND PERPETUATED LOCATION of the corner.

A-E 7.08(3)(g)(h) This corner was not determined through lost-corner-proportionate methods.

A-E 7.08(3)(i) I, Jeffrey L. DeMuth, Professional Land Surveyor No. S-2656, hereby certify that the corner location on this record was determined by the Lincoln County Surveyor, and the monuments found or set as shown hereon were measured by me or under my direction and control, and that this U.S. Public Land Survey Monument Record is correct and complete to the best of my knowledge, and belief.



SIGNATURE

September 16, 2022

DATE



4327 Cole Road, Crandon, WI 54520
James E. Anderson - 715.784.3485
Jeffrey L. DeMuth – 715.482.5237
Cardinal.north@outlook.com

REPORT

2022-Lincoln County PLSS Corner Remonumentation and GPS Services

Wisconsin Corner Point Identification Number: 43405240000

Surveyor: Jeffrey L. DeMuth – S2656

Corner monument: Found Berntsen cast aluminum monument – 4" diameter cap.

Field Book: Cardinal North – Lincoln Co. Remon. – 2022-00

Page: 26

Horizontal Datum: WisCRS – Lincoln County Zone – NAD83(2011)

Date / time of initial measurement:

June 2, 2022 - Start 11:02:26 CDT – End 11:18:00 CDT

Reference monuments:

4 – Set - 7/8" diameter X 30" long iron rods with 2" diameter Lincoln Co. aluminum cap.

Coordinate Table

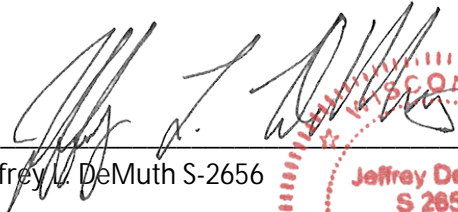
	County Provided	2022 Measurement	Difference
North	206245.870	206245.969	-0.10
East	364956.859	364957.133	-0.27

Observed coordinates match existing calculated coordinates within reason.

Request Data Log for more information.

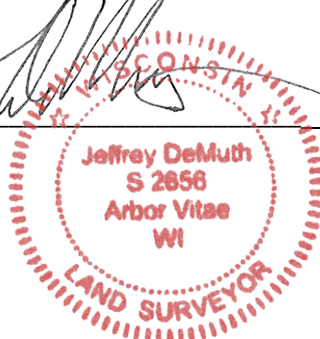
Additional Notes:

Corner falls ± 7 feet east of Swamp Road centerline and is at the road grade.


Jeffrey L. DeMuth S-2656

September 16, 2022

Date



43405240000_Mon-N



43405240000_North



43405240000_West



43405240000_South



43405240000_East

