

# LINCOLN COUNTY U.S. PUBLIC LAND CORNER RESTORATION

The Quarter corner common to Sections 23 & 24, T. 34 N., R. 5 EW.

4340523 2000

**Corner was: (check all that apply)**

- Restored through acceptance of an obliterated evidence location.
- Restored through acceptance of a found perpetuated location.
- Determined to be lost and re-established through proportionate methods.  
Show bearings and distances to PLSS corners used for proportioning, and show original distances).
- Restored/recovered/re-established in a location that differs from a previously established position.  
(Show difference in plan view below).
- Check here if addition information is shown on the reverse side of this form.

**Describe record evidence, recovered physical evidence, occupational evidence, testimonial evidence and all other evidence considered in the recovery/restoration of the corner.**

The original corner was established in 1855 by Jackson L. Prentice. Original bearing trees: tamarac, 14", S 57° W, 30 links and a birch, 10" S 60° E, 52 links. Tony Dallman, Lincoln County Surveyor recently determined this corner was lost. I re-established this corner by single proportionate measurement between the NE and SE corners of Section 23 as shown below. Corner witnessed by adjoining landowner, David Seidler.

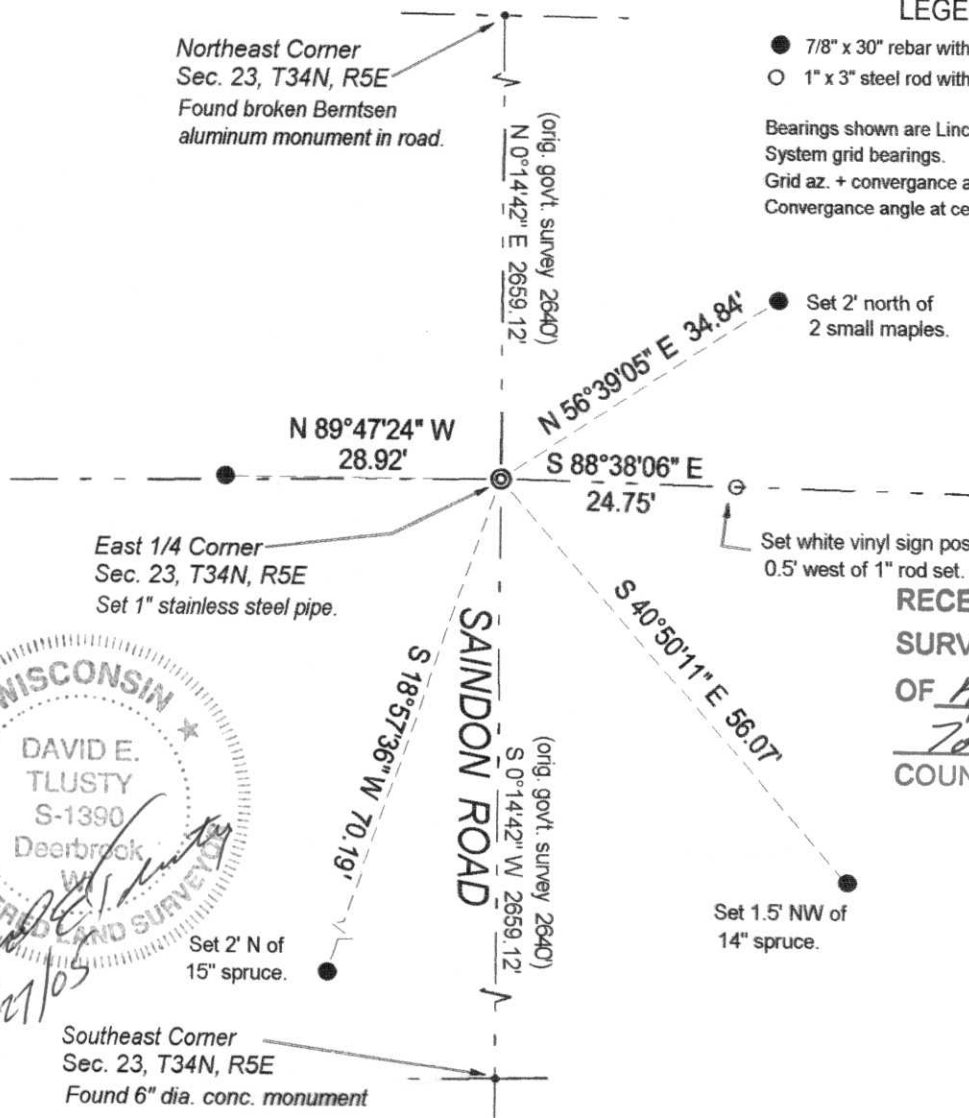
**Physical description of the monument set:**

For the corner, I set a 1" (ID) x 24" stainless steel pipe, with barbed points welded to the bottom and a 2 1/2"± brass washer attached to the top, which is 8" below the gravel road surface. The corner falls approx. 5 feet west of the center of the existing gravel roadway.

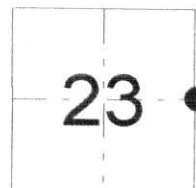
**Describe the accessories used to perpetuate the corner. Include a plan view drawing and accessories found/set. Describe measuring point on bearing trees. Show any topographic features that would aid in future recovery of the corner.**

**LEGEND**

- 7/8" x 30" rebar with alum. cap set
- 1" x 3" steel rod with 3" x 3" stainless steel plate set
- Bearings shown are Lincoln County Coordinate System grid bearings.
- Grid az. + convergence angle = geodetic az.
- Convergence angle at center of project = (-0°03'07")



RECEIVED BY LINCOLN COUNTY  
SURVEYOR THIS 29<sup>TH</sup> DAY  
OF April 20 05  
Tony Dallman  
COUNTY SURVEYOR



● = corner perpetuated  
The East Quarter corner of Section 23, T. 34 N., R. 5 E., Lincoln County, WI



I, David E. Tlusty, Wisconsin Registered Land Surveyor s-1390, certify that the corner location on this record was determined by me and that this U.S. Public Land Survey Monument Record is correct to the best of my knowledge and belief.