

# U S PUBLIC LAND SURVEY MONUMENT RECORD

NOTE: This form is intended and designed to fulfill all requirements of Wisconsin Administrative Code, Chapter A-E 7.08 U.S. Public Land Survey Monument Record (3) (a-i)

A-E 7.08(3)(a) Identity of corner:  
 EAST 1/4 CORNER SECTION 22,  
 TOWNSHIP 34 NORTH,  
 RANGE 05 EAST OF THE 4TH PM,  
 TOWN OF TOMAHAWK,  
 COUNTY OF LINCOLN

WISCORS - LINCOLN COUNTY  
 N: 209,061.121 USft (209,061.005)  
 E: 354,278.999 USft (354,278.873)  
 Datum: NAD83 (2011)  
 GNSS Method RTN - Direct  
 GNSS Control WISCORS VRS



The coordinate value shown has been verified by the average of two or more GPS observations at a markedly different time. Coordinates shown in parenthesis are provided by Lincoln County.

A-E 7.08(3)(b)

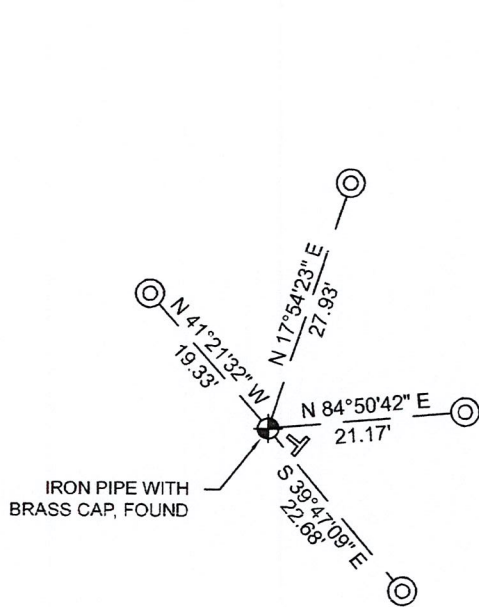
Original Surveyor: Jackson L. Prentice

Date of Original Survey	Commenced:	July 6, 1855	Original Accessories:		
	Completed:	July 12, 1855	Aspen	14	S 42° E 16 Links
			Red Oak	10	N 70° W 77 Links

December 20, 2012 - Surveyor 2729 - Gregory S. Maines - indicate this position as "coordinates provided by Lincoln County" on Lincoln County map L492A-B.

September 14, 2022 - While performing the 2022 Lincoln County PLSS Corner Remonumentation and GPS Services project, I found a 2.5" diameter iron pipe with a 3" diameter threaded brass cap stamped to identify the corner and near the computed position provided by Lincoln County. The monument extends ±14" above the ground. I established 4 new reference monuments as shown below.

A-E 7.08(3)(c)(d) Plan view of corner with references to at least 4 witness monuments.



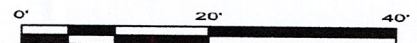
BEARINGS LISTED TO THE NEAREST SECOND ARE REFERENCED TO WISCONSIN COUNTY COORDINATE REFERENCE SYSTEM - LINCOLN COUNTY ZONE. ALL OTHER BEARINGS ARE MAGNETIC



RECEIVED BY LINCOLN COUNTY  
 SURVEYOR THIS 27<sup>TH</sup> DAY  
 OF December 20 22  
*Jeffrey DeMuth*  
 COUNTY SURVEYOR

## LEGEND

- 2.5" diameter iron pipe with 3" diameter brass cap, found
- 7/8" diameter X 30" long - iron rod with 2" diameter aluminum cap, set
- Vinyl T-post, set ±1 foot SE of corner



A-E 7.08(3)(e) 1855 Surveyor set a post, 2012 Surveyor had coordinates. I found a iron pipe with brass cap.

A-E 7.08(3)(f) I accept this monument as a FOUND PERPETUATED LOCATION of the corner.

A-E 7.08(3)(g)(h) This corner was not determined through lost-corner-proportionate methods.

A-E 7.08(3)(i) I, Jeffrey L. DeMuth, Professional Land Surveyor No. S-2656, hereby certify that the corner location on this record was determined by the Lincoln County Surveyor, and the monuments found or set as shown hereon were measured by me or under my direction and control, and that this U.S. Public Land Survey Monument Record is correct and complete to the best of my knowledge, and belief.

SIGNATURE

December 14, 2022

DATE



0-17

## REPORT

### 2022-Lincoln County PLSS Corner Remonumentation and GPS Services

Wisconsin Corner Point Identification Number: 43405222000

Surveyor: Jeffrey L. DeMuth – S2656

Corner monument: Found 2.5" diameter iron pipe with threaded brass cap stamped to identify corner.

Field Book: Cardinal North – Lincoln Co. Remon. – 2022-00

Page: 39

Horizontal Datum: WisCRS – Lincoln County Zone – NAD83(2011)

Date / time of initial measurement:

September 14, 2022 - Start 13:47:28 CDT – End 14:55:12 CDT

Reference monuments:

4 – Set - 7/8" diameter X 30" long iron rods with 2" diameter Lincoln Co. aluminum cap.

#### Coordinate Table

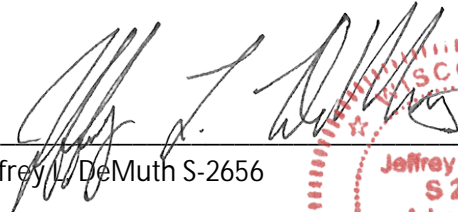
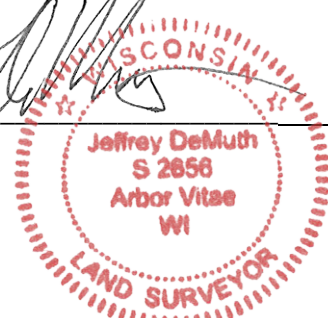
	County Provided	2022 Measurement	Difference
North	209061.005	209061.121	-0.12
East	354278.873	354278.999	-0.13

Observed coordinates match with existing coordinates within reason.

Request Data Log for more information.

Additional Notes:

Corner extends ±14" above grade.

  
 Jeffrey L. DeMuth S-2656
 
 October 7, 2022  
 Date



43405222000\_Mon-N





4340522000\_North





43405222000\_West





43405222000\_South





43405222000\_East

