

U S PUBLIC LAND SURVEY MONUMENT RECORD

NOTE: This form is intended and designed to fulfill all requirements of Wisconsin Administrative Code, Chapter A-E 7.08 U.S. Public Land Survey Monument Record (3) (a-i)

A-E 7.08(3)(a) Identity of corner:
SOUTH 1/4 CORNER SECTION 22,
TOWNSHIP 34 NORTH,
RANGE 05 EAST OF THE 4TH PM,
TOWN OF TOMAHAWK,
COUNTY OF LINCOLN

WISCORS - LINCOLN COUNTY
N: 206,571.630 USft (206,571.489)
E: 351,602.162 USft (351,602.157)
Datum: NAD83 (2011)
GNSS Method RTN - Direct
GNSS Control WISCORS VRS



The coordinate value shown has been verified by the average of two or more GPS observations at a markedly different time. Coordinates shown in parenthesis are provided by Lincoln County.

A-E 7.08(3)(b)

Original Surveyor: Jackson L. Prentice

Date of Original Survey	Commenced:	July 6, 1855	Original Accessories:		
	Completed:	July 12, 1855	Cedar	10	N 10° E 24 Links
			Pine	12	S 11° W 36 Links

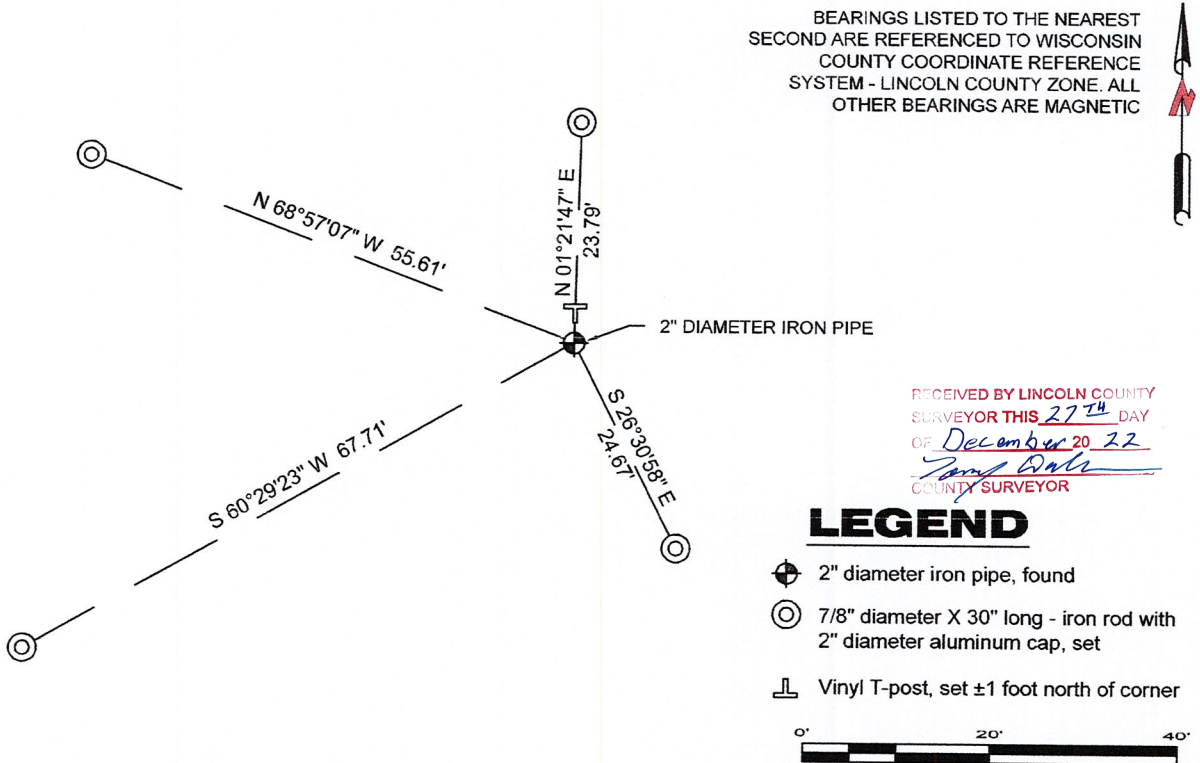
December 20, 2012 - Surveyor 2729 - Gregory S. Maines - indicate this position as "coordinates provided by Lincoln County" on Lincoln County map L492A-B.

December 20, 2012 - Surveyor 2729 - Gregory S. Maines - indicate this position as "N: 206571.49, E: 351602.16 coordinates provided by Lincoln County Surveyor" on Lincoln County Section Summary - Section 14, T 34 N, R 5 E.

July 9, 2013 - Surveyor 2405 - Anthony R. Dallman - indicates this position as "found 2.5" iron pipe" on Lincoln County map S485B.

September 29, 2022 - While performing the 2022 Lincoln County PLSS Corner Remonumentation and GPS Services project, I found a 2" diameter iron pipe near the computed position provided by Lincoln County. The monument extends ±3.2 feet south above ground. I established 4 new reference monuments as shown below.

A-E 7.08(3)(c)(d) Plan view of corner with references to at least 4 witness monuments.



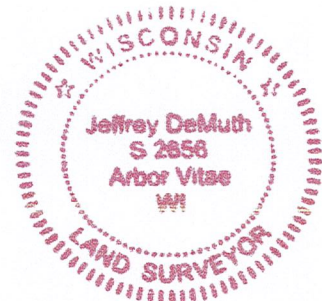
A-E 7.08(3)(e) 1855 Surveyor set a post, 2012 Surveyor had coordinates, 2013 Surveyor found a 2.5" iron pipe, I found 2" diameter iron pipe.

A-E 7.08(3)(f) I accept this monument as a FOUND PERPETUATED LOCATION of the corner.

A-E 7.08(3)(g)(h) This corner was not determined through lost-corner-proportionate methods.

A-E 7.08(3)(i) I, Jeffrey L. DeMuth, Professional Land Surveyor No. S-2656, hereby certify that the corner location on this record was determined by the Lincoln County Surveyor, and the monuments found or set as shown hereon were measured by me or under my direction and control, and that this U.S. Public Land Survey Monument Record is correct and complete to the best of my knowledge, and belief.

Jeffrey L. DeMuth
SIGNATURE
December 14, 2022
DATE



Q-15

REPORT

2022-Lincoln County PLSS Corner Remonumentation and GPS Services

Wisconsin Corner Point Identification Number: 43405220020

Surveyor: Jeffrey L. DeMuth – S2656

Corner monument: Found 2" diameter iron pipe.

Field Book: Cardinal North – Lincoln Co. Remon. – 2022-00

Page: 40

Horizontal Datum: WisCRS – Lincoln County Zone – NAD83(2011)

Date / time of initial measurement:

September 29, 2022 - Start 12:33:50 CDT – End 13:14:20 CDT

Reference monuments:

4 – Set - 7/8" diameter X 30" long iron rods with 2" diameter Lincoln Co. aluminum cap.

Coordinate Table

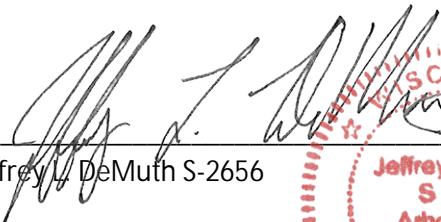

	County Provided	2022 Measurement	Difference
North	206571.489	206571.630	-0.14
East	351602.157	351602.162	0.00

Observed coordinates match with existing coordinates within reason.

Request Data Log for more information.

Additional Notes:

Corner extends ± 3.2 feet above grade.


 Jeffrey L. DeMuth S-2656
 
 October 7, 2022
 Date

43405220020_Mon-N



43405220020_North



43405220020_West



43405220020_South

43405220020



43405220020_East

