

U.S. PUBLIC LAND SURVEY MONUMENT RECORD

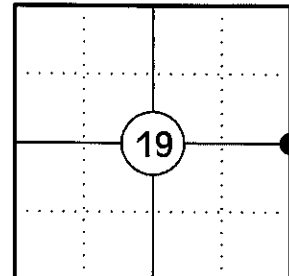
NOTE: THIS FORM IS INTENDED AND DESIGNED TO FULFILL ALL REQUIREMENTS OF WISCONSIN ADMINISTRATIVE CODE CHAPTER A-E 7.08 U.S. PUBLIC LAND SURVEY MONUMENT RECORD (3) (a)(b)(c)(d)(e)(f)(g)(h)(i). AN ADDITIONAL SHEET MAY BE ADDED IF NECESSARY TO CONFIRM WITH SAID REQUIREMENTS.

(a) CORNER LOCATION:

EAST CORNER OF SECTION 19
TOWNSHIP 34 NORTH
RANGE 5 EAST
TOWN OF TOMAHAWK
COUNTY OF LINCOLN

LINCOLN COUNTY COORDINATES:

N: 209236.46
E: 338311.71



(b) HISTORY OF ORIGINAL CORNER:

ORIGINAL SURVEYOR: JACKSON L. PRENTICE
DATE OF SURVEY: JULY 1855

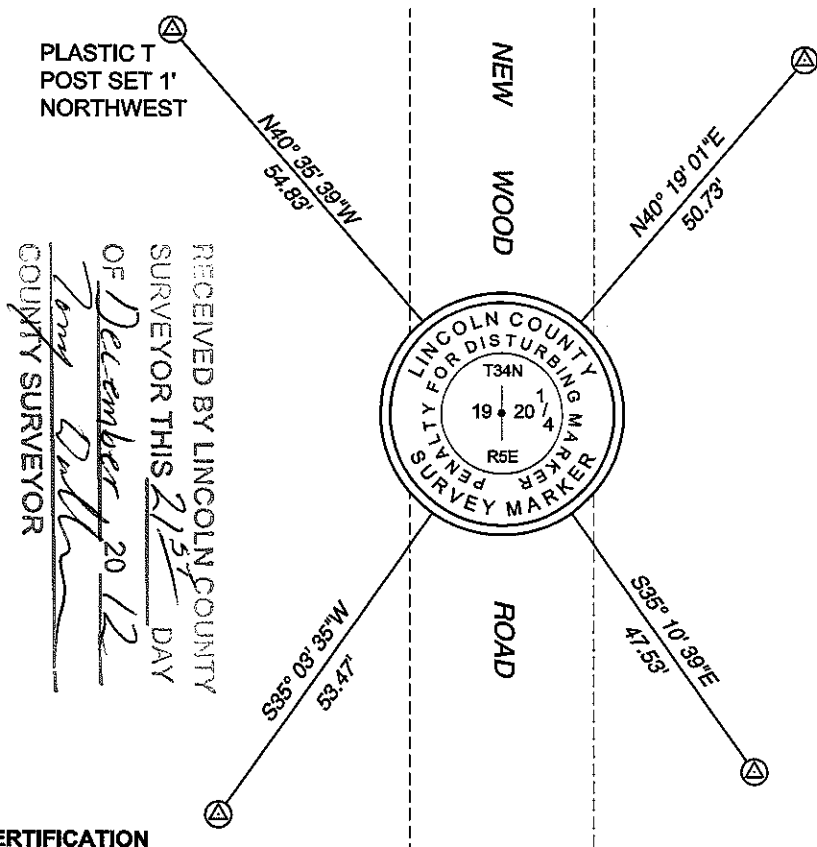
ORIGINAL BEARING TREES: 16" HEMLOCK - N27°W, 12 LKS
14" HEMLOCK - S20°E, 42 LKS

(f)(g)(h) DESCRIPTION OF MONUMENT FOUND AT THIS CORNER AND IF IT WAS ACCEPTED STATE ALL EVIDENCE (MATERIAL, TESTIMONIAL, OCCUPATIONAL, PLATS, RECORDS, OTHER MONUMENTS) USED AS A BASIS FOR ESTABLISHING LOCATION. IF REESTABLISHING THROUGH LOST CORNER PROPORTIONATE METHODS, INDICATE ALL MONUMENTS, DISTANCES, AND DIRECTIONS USED TO ESTABLISH. INDICATE TYPE OF MONUMENT AND SIGN POST FOUND OR SET.

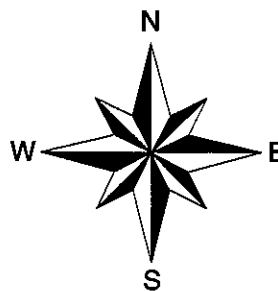
1855: JACKSON L. PRENTICE SET THE ORIGINAL 1/4 SECTION CORNER POST.

11/28/2012: I FOUND NO EVIDENCE OF THE ORIGINAL CORNER. I POSITIONED THIS CORNER BY FIRST ESTABLISHING THE NORTHING BY PROPORTIONING BETWEEN THE SE CORNER OF SECTION 19 TO THE SOUTH, THE NE CORNER OF SECTION 19 TO THE NORTH. I ESTABLISHED THE EASTING BY USING THE CENTERLINE OF NEW WOOD ROAD. THIS POSITION FALLS AT A SLIGHT BEND IN NEW WOOD ROAD. I FOUND A FENCE POST OF UNKNOWN ORIGIN, WHICH I DID NOT ACCEPT, ON THE EAST SIDE OF NEW WOOD ROAD AND A BLUE LINE RUNNING EAST FROM THE POST APPROXIMATELY 43 FEET NORTH OF MY PROPORTIONED CORNER. I SET A LINCOLN COUNTY BERNTSEN BREAKAWAY MONUMENT IN THE CENTERLINE OF NEW WOODS ROAD 12" BELOW GRADE AND SET FOUR REFERENCE MONUMENTS TO WITNESS THE CORNER.

(c)(d)(e) PLAN VIEW OF CORNER WITH TIES TO AT LEAST FOUR WITNESSES. IF IN DISAGREEMENT WITH PREVIOUSLY ESTABLISHED CORNER, SHOW THE DISTANCES BETWEEN THE TWO CORNERS AND ALSO INDICATE THE TIE TO THE DISPUTED CORNER.



L.C. GRID BEARINGS



⊠ 3/4" X 30" IRON REBAR WITH LINCOLN CO. ALUM. CAP SET

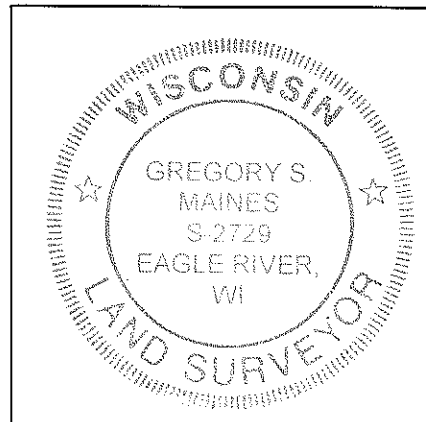
SKETCH IS NOT TO SCALE
DISTANCES TO BT'S ARE TO NAIL IN SIDE

CERTIFICATION

I GREGORY S. MAINES, REGISTERED LAND SURVEYOR NO. 2729, HEREBY CERTIFY THAT THE CORNER LOCATION ON THIS RECORD WAS REFERENCED BY ME OR UNDER MY DIRECTION AND CONTROL AND THAT THIS U.S. PUBLIC LAND SURVEY MONUMENT RECORD IS COMPLETE TO THE BEST OF MY KNOWLEDGE AND BELIEF.

SIGNATURE

Gregory S. Maines



INDEX NO. 0-5