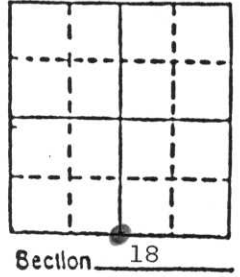


U.S. PUBLIC LAND SURVEY MONUMENT RECORD

Note: This form is intended and designed to fulfill all requirements of Wisconsin Administrative Code, Chapter A-E 5.02, U.S. Public Land Survey Monument Record (3) (a) (b) (c) (d) (e) (f) (g) (h) (i). An additional sheet may be added if necessary to conform with said requirements.

(a) Corner location: Township 34 North
 Range 5 East

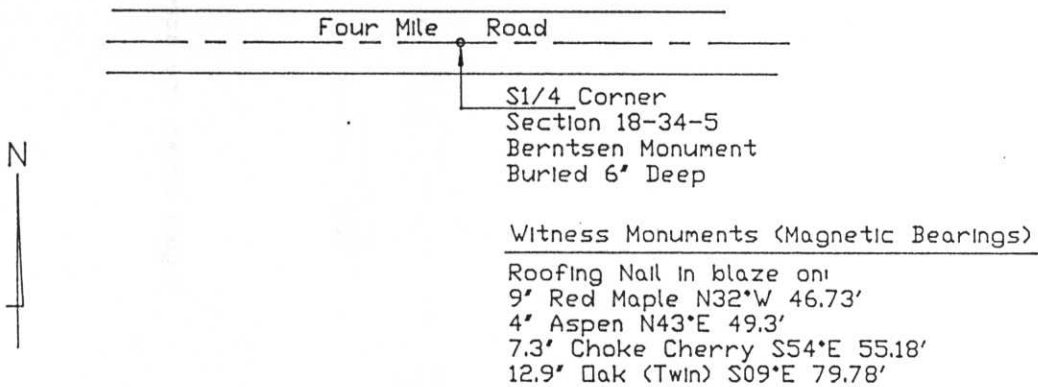
Town Tomahawk
 County Lincoln



b) (f) (g) (h) Description of monument found at this corner and if it was accepted, state all evidence (material, testimonial, occupational, plats, records, other monuments) used as a basis for accepting. If not accepted or if nothing was found, state evidence used as basis for establishing location. If reestablished through lost corner proportionate methods, indicate all monuments, distances and directions used to establish.

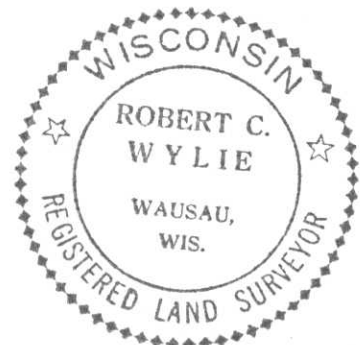
No corner or witness evidence found at this location. A lack of existing section or quarter section corners to the east, north and south precluded the use of double proportioning. The corner was established in the approximate center of Four Mile Road (road has a pronounced change in alignment here) in conjunction with 6 other section or quarter section corners found or set 2.5 miles to the west, 0.5 mile to the east and 1.0 mile to the north, adhering as much as possible to the same proportions found on the original survey (see map on other side).

c) (d) (e) Plan view of corner with ties to at least 4 witness monuments. If in disagreement with previously established corner, show the distances between the two corners and also indicate the ties to the disputed corner.

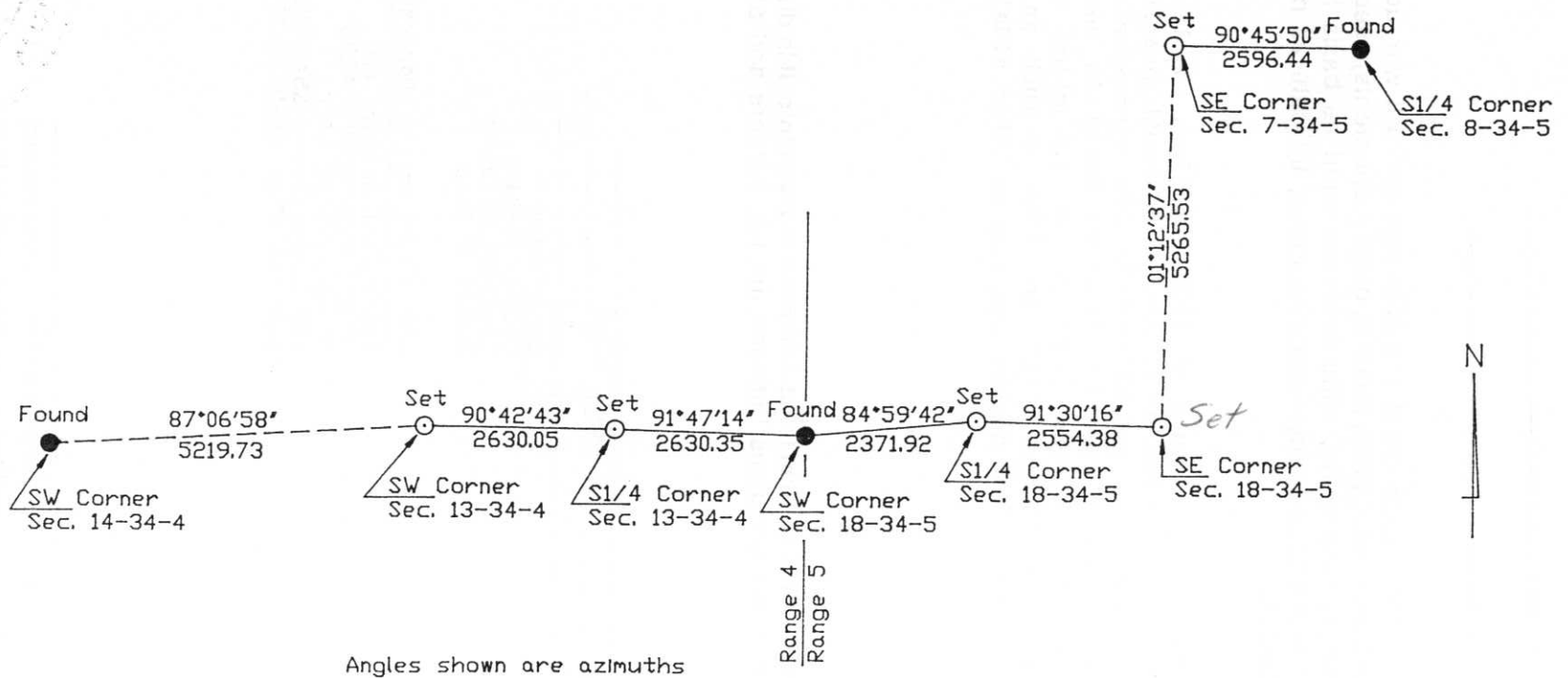


(i) I, Robert C. Wylie, RLS-66
 (type or print name) certify that the corner location on this record was determined by me or under my direction and control and that this U.S. Public Land Survey Monument Record is correct and complete to the best of my knowledge and belief.

Robert C. Wylie Aug 2, 1990
 Signature Date



Index No. M-3



RECEIVED AT LINCOLN COUNTY
COURTHOUSE THIS 17th DAY
OF August 1990
TAX DESCRIPTION OFFICE