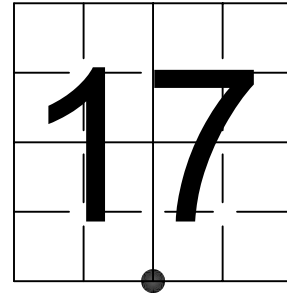


# U S PUBLIC LAND SURVEY MONUMENT RECORD

NOTE: This form is intended and designed to fulfill all requirements of Wisconsin Administrative Code, Chapter A-E 7.08 U.S. Public Land Survey Monument Record (3) (a-i)

A-E 7.08(3)(a) Identity of corner:  
 SOUTH 1/4 CORNER SECTION 17,  
 TOWNSHIP 34 NORTH,  
 RANGE 05 EAST OF THE 4TH PM,  
 TOWN OF TOMAHAWK,  
 COUNTY OF LINCOLN

WISCORS - LINCOLN COUNTY  
 N: 211,911.340 USft (211,911.264)  
 E: 341,011.538 USft (341,011.543)  
 Datum: NAD83 (2011)  
 GNSS Method RTN - Direct  
 GNSS Control WISCORS VRS



The coordinate value shown has been verified by the average of two or more GPS observations at a markedly different time. Coordinates shown in parenthesis are provided by Lincoln County.

A-E 7.08(3)(b)

Original Surveyor: Jackson L. Prentice

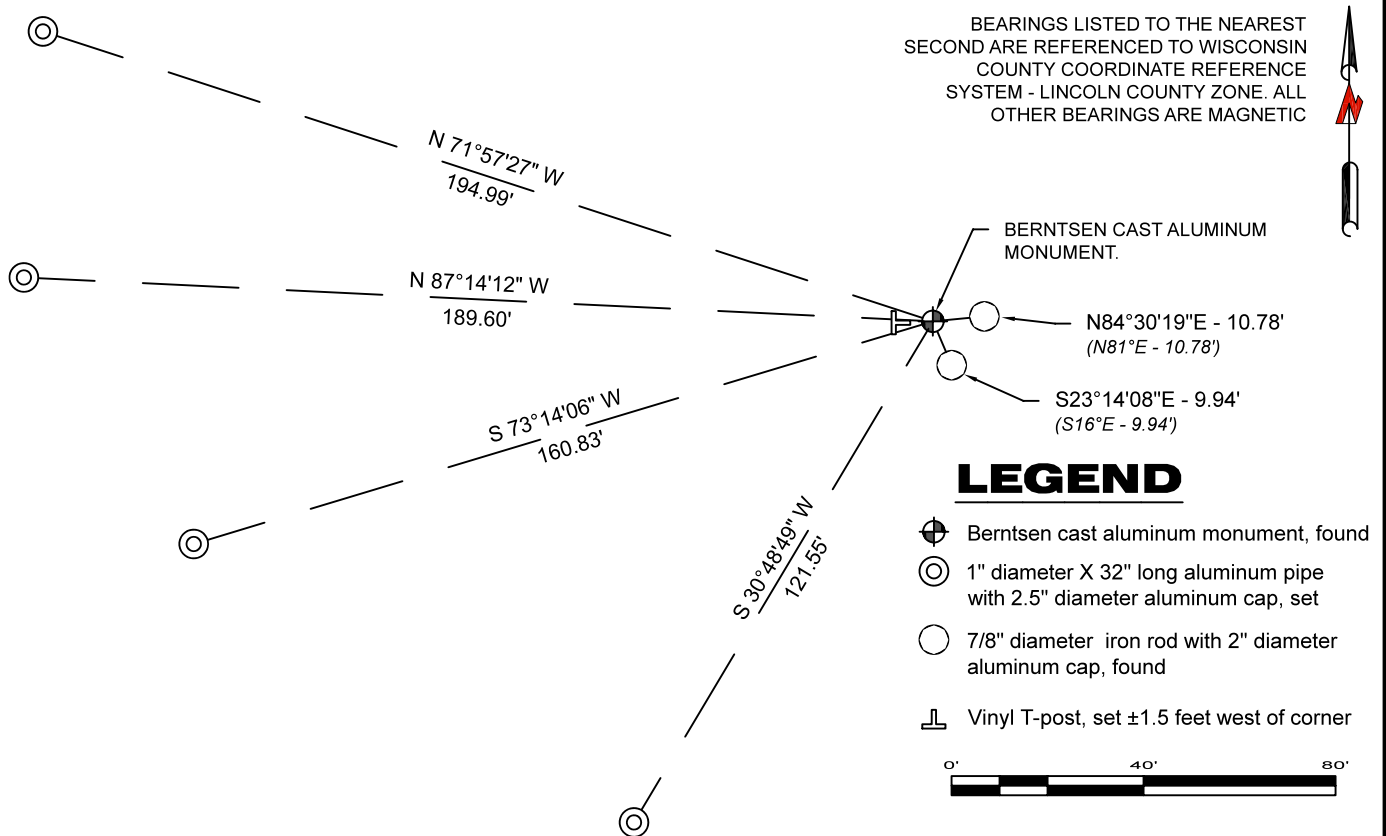
|                         |            |               |                       |    |         |          |
|-------------------------|------------|---------------|-----------------------|----|---------|----------|
| Date of Original Survey | Commenced: | July 6, 1855  | Original Accessories: |    |         |          |
|                         | Completed: | July 12, 1855 | Tamarac               | 10 | North   | 28 Links |
|                         |            |               | Pine                  | 10 | S 12° E | 11 Links |

November 11, 2004 - Surveyor 2405 - Anthony R. Dallman - indicates "set Berntsen", and 3 reference monuments: NE corner @ top of 3'x3' boulder, N86°W, 5.25' - iron rod, N81°E, 10.78' - iron rod, S16°E, 9.94' as noted on page 99 of field notes.

December 20, 2012 - Surveyor 2729 - Gregory S. Maines - indicate this position as "N: 211911.26, E: 341011.54 coordinates provided by Lincoln County Surveyor" on Lincoln County Section Summary - Section 17, T 34 N, R 5 E.

August 28, 2023 - While performing the 2022 Lincoln County PLSS Corner Remonumentation and GPS Services project, County Surveyor Anthony R. Dallman and I found a Berntsen cast aluminum monument with a 4" diameter aluminum cap near the computed position provided by Lincoln County. We also found the reference monuments established by Dallman in 2004. The monument was laying on its side at the edge of a beaver pond, in water ±12 inches deep. We reset the monument vertical from the two iron rod reference monuments previously established by Dallman in 2004, and I established 4 new reference monuments as shown below.

A-E 7.08(3)(c)(d) Plan view of corner with references to at least 4 witness monuments.



A-E 7.08(3)(e) 1855 Surveyor set a post, 2004 Surveyor set a Berntsen, 2012 Surveyor had coordinates. I found a Berntsen cast aluminum monument.

A-E 7.08(3)(f) I accept this monument as a FOUND PERPETUATED LOCATION of the corner.  
 A-E 7.08(3)(g)(h) This corner was not determined through lost-corner-proportionate methods.

A-E 7.08(3)(i) I, Jeffrey L. DeMuth, Professional Land Surveyor No. S-2656, hereby certify that the corner location on this record was determined by the Lincoln County Surveyor, and the monuments found or set as shown hereon were measured by me or under my direction and control, and that this U.S. Public Land Survey Monument Record is correct and complete to the best of my knowledge, and belief.



SIGNATURE

August 30, 2023

DATE

## REPORT

### 2022-Lincoln County PLSS Corner Remonumentation and GPS Services

Wisconsin Corner Point Identification Number: 43405170020

Surveyor: Jeffrey L. DeMuth – S2656

Corner monument: Berntsen cast aluminum monument

Field Book: Cardinal North – Lincoln Co. Remon. – 2022-00

Page: 59

Horizontal Datum: WisCRS – Lincoln County Zone – NAD83(2011)

Date / time of initial measurement:

August 28, 2023 - Start 15:31:11 CDT – End 15:36:14 CDT

Reference monuments:

4 – Set - 1" diameter X 32" long aluminum pipe with 2.5" diameter Lincoln Co. aluminum cap.

#### Coordinate Table

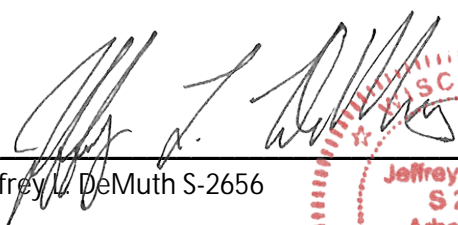

|       | County Provided | 2023 Measurement | Difference |
|-------|-----------------|------------------|------------|
| North | 211911.264      | 211911.340       | -0.08      |
| East  | 341011.543      | 341011.538       | 0.01       |

Observed coordinates match with existing coordinates within reason.

Request Data Log for more information.

Additional Notes:

Corner falls near the west edge of an open water beaver pond. At the time of measuring, the monument was above the water surface.

  
 Jeffrey L. DeMuth S-2656
 
 August 30, 2023  
 Date

43405170020\_Mon-N



43405170020\_North



43405170020\_West



43405170020\_South



43405170020\_East

