

U.S. PUBLIC LAND SURVEY MONUMENT RECORD

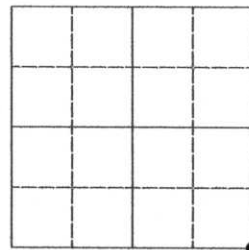
Note: This form is intended and designed to fulfill all requirements of the Wisconsin Administrative Code, Chapter A-E 7.08 U.S. Public Land Monument Record (3)(a)(b)(c)(d)(e)(f)(g)(h)(i). An additional sheet may be added if necessary to conform with said requirements.

(a) CORNER LOCATION:

sotheast corner Section 15
Township 34 North
Range 5 East
Town of Tomahawk
County of Lincoln

LINCOLN COUNTY COORDINATE
SYSTEM, BASED ON GPS CONTROL
SUPPLIED FROM THE COUNTY
SURVEYORS OFFICE.

North: 211,726.958
East: 354,292.451



SECTION 15

(b) HISTORY OF ORIGINAL CORNER ESTABLISHMENT

Original Surveyor: J.L. Prentice
Date of Survey: Commenced July 1855
Completed July 1855

Original B.T.'S
Tam. 10" dia., N40°W 6 links Spruce 10" dia., S78°E 25 links
Tam. 9" dia., N39°E 45 links Tam. 10" dia., S38°W 32 links

(f)(g)(h) DESCRIPTION OF MONUMENT FOUND AT THIS CORNER AND IF IT WAS ACCEPTED, STATE ALL EVIDENCE (MATERIAL, TESTIMONIAL, OCCUPATIONS, PLATS, RECORDS, OTHER MONUMENTS) USED AS A BASIS FOR ESTABLISHING LOCATION. IF NOT ACCEPTED OF IF NOTHING WAS FOUND, STATE EVIDENCE USED AS BASIS FOR ESTABLISHING LOCATION. IF REESTABLISHED THROUGH LOST CORNER PROPORTIONATE METHODS, INDICATE ALL MONUMENTS, DISTANCES AND DIRECTIONS USED TO ESTABLISH. INDICATE TYPE OF MONUMENT AND SIGN POST FOUND OR SET.

Original surveyor: J.L. Prentice, north at 80 chains set post for corner to sections 14, 15, 22 & 23.

Michael L. Oestreich: December 2007, found iron pipe in mound of rocks. I replaced the iron pipe with a Berntsen aluminum monument and made witness ties as shown in the plan below. See Map No. 07-37(2) by Oestreich Surveying & Mapping, LLC, dated 1/02/08, for complete subdivision of Section 15.

(c)(d)(e) PLAN VIEW OF CORNER WITH TIES TO AT LEAST 4 WITNESS MONUMENTS. IF IN DISAGREEMENT WITH PREVIOUSLY ESTABLISHED CORNER, SHOW THE DISTANCE BETWEEN THE TWO CORNERS AND ALSO INDICATE THE TIES TO THE DISPUTED CORNER.

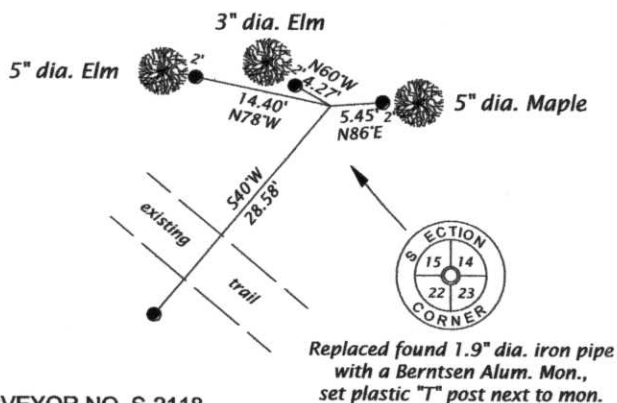


Bearings magnetic



Scale 1" = 20'

● = Set aluminum capped 0.87" dia. x 30" long iron rod.



(i) I, MICHAEL L. OESTREICH, REGISTERED LAND SURVEYOR NO. S-2118
HEREBY CERTIFY THAT THE CORNER LOCATION ON THIS RECORD
WAS DETERMINED BY ME OR UNDER MY DIRECTION AND CONTROL
AND THAT THIS U.S. PUBLIC LAND SURVEY MONUMENT RECORD IS
CORRECT AND COMPLETE TO THE BEST OF MY KNOWLEDGE AND
BELIEF.

Michael L. Oestreich
SIGNATURE 2/01/08
DATE

RECEIVED BY LINCOLN COUNTY
SURVEYOR THIS 5TH DAY
OF February 20 08
Tommy Dallen
COUNTY SURVEYOR

INDEX NO. M-17