

# U S PUBLIC LAND SURVEY MONUMENT RECORD

NOTE: This form is intended and designed to fulfill all requirements of Wisconsin Administrative Code, Chapter A-E 7.08 U.S. Public Land Survey Monument Record (3) (a-i)

A-E 7.08(3)(a) Identity of corner:  
 SOUTH 1/4 CORNER SECTION 14,  
 TOWNSHIP 34 NORTH,  
 RANGE 05 EAST OF THE 4TH PM,  
 TOWN OF TOMAHAWK,  
 COUNTY OF LINCOLN

WISCORS - LINCOLN COUNTY  
 N: 211,663.301 USft (211,663.307)  
 E: 356,956.316 USft (356,956.217)  
 Datum: NAD83 (2011)  
 GNSS Method RTN - Direct  
 GNSS Control WISCORS VRS



The coordinate value shown has been verified by the average of two or more GPS observations at a markedly different time. Coordinates shown in parenthesis are provided by Lincoln County.

A-E 7.08(3)(b)

Original Surveyor: Jackson L. Prentice

Date of Original Survey	Commenced:	July 6, 1855	Original Accessories:		
	Completed:	July 12, 1855	Tamarac	12	N 37° W 5 Links
			Tamarac	10	S 33° E 17 Links

December 20, 2012 - Surveyor 2729 - Gregory S. Maines - indicate this position as "coordinates provided by Lincoln County" on Lincoln County map L492A-B.

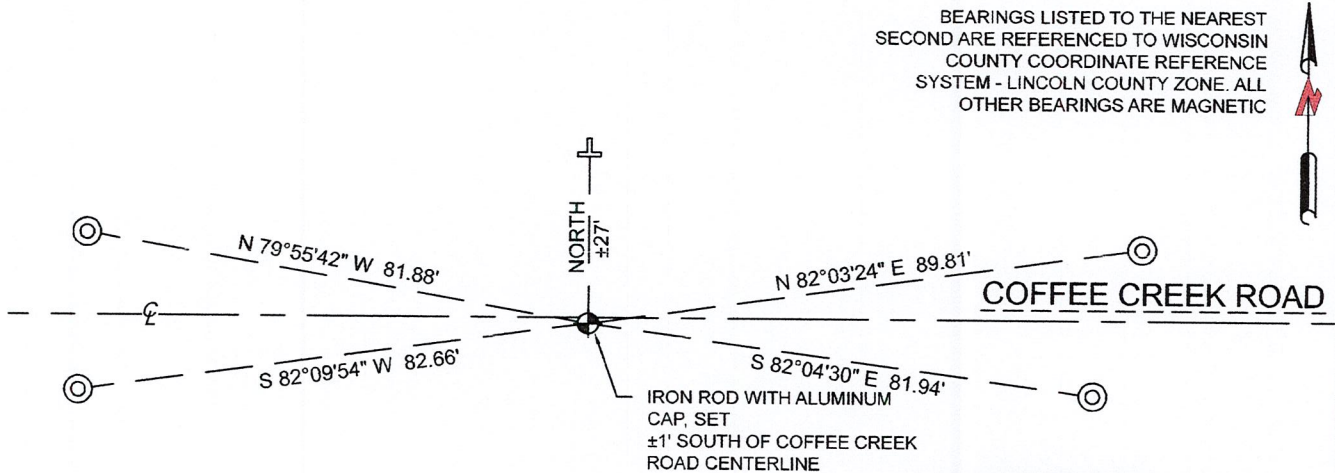
December 20, 2012 - Surveyor 2729 - Gregory S. Maines - indicate this position as "N211663.31, E356956.22 coordinates provided by Lincoln County Surveyor" on Lincoln County Section Summary - Section 14, T 34 N, R 5 E.

January 2, 2013 - Surveyor 2343 - Kevin P. Bixby - indicates this position as "calculated position" on Lincoln County map M622B.

September 14, 2022 - While performing the 2022 Lincoln County PLSS Corner Remonumentation and GPS Services project, I went to the coordinate position provided by Lincoln County, I made a careful search of the area and found no evidence of the corner or witnesses. The County provided location is ±1 feet south of Coffee Creek Road centerline.

Under the direction of Lincoln County, I restored the corner using coordinates provided by Lincoln County and set a 7/8" diameter x30" long iron rod with a 2" diameter aluminum aluminum cap ±16" below the road grade. I established 4 new reference monuments as shown below.

A-E 7.08(3)(c)(d) Plan view of corner with references to at least 4 witness monuments.

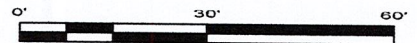


BEARINGS LISTED TO THE NEAREST SECOND ARE REFERENCED TO WISCONSIN COUNTY COORDINATE REFERENCE SYSTEM - LINCOLN COUNTY ZONE. ALL OTHER BEARINGS ARE MAGNETIC

## LEGEND

- 7/8" diameter X 30" long - iron rod with 2" diameter aluminum cap, set
- 7/8" diameter X 30" long - iron rod with 2" diameter aluminum cap, set
- Vinyl T-post, set ±27 feet north of corner

RECEIVED BY LINCOLN COUNTY SURVEYOR THIS 27<sup>TH</sup> DAY OF December 20 22  
*Tom O'Neil*  
 COUNTY SURVEYOR

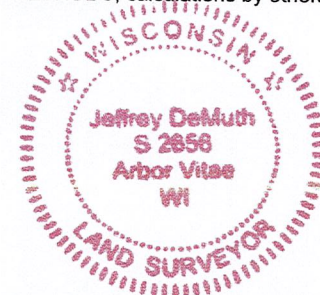


A-E 7.08(3)(e) 1855 Surveyor set a post, 2012 and 2013 Surveyors had coordinates. I set a 7/8" diameter x 30" long iron rod with a 2" diameter aluminum cap.

A-E 7.08(3)(f) This corner was not restored through the acceptance of an obliterated location or a found perpetuated location.

A-E 7.08(3)(g)(h) The position of this corner was determined through LOST-CORNER-PROPORTIONATE METHODS, calculations by others, corner position provided by Lincoln County.

A-E 7.08(3)(i) I, Jeffrey L. DeMuth, Professional Land Surveyor No. S-2656, hereby certify that the corner location on this record was determined by the Lincoln County Surveyor, and the monuments found or set as shown hereon were measured by me or under my direction and control, and that this U.S. Public Land Survey Monument Record is correct and complete to the best of my knowledge, and belief.



SIGNATURE

*Jeffrey L. DeMuth*

December 14, 2022

DATE

61-61

## REPORT

### 2022-Lincoln County PLSS Corner Remonumentation and GPS Services

Wisconsin Corner Point Identification Number: 43405140020

Surveyor: Jeffrey L. DeMuth – S2656

Corner monument: Set 7/8" diameter X 30" long iron rod, with 2" diameter aluminum cap at coordinates provided.

Field Book: Cardinal North – Lincoln Co. Remon. – 2022-00

Page: 28

Horizontal Datum: WisCRS – Lincoln County Zone – NAD83(2011)

Date / time of initial measurement:

September 14, 2022 - Start 10:02:14 CDT – End 10:29:19 CDT

Reference monuments:

4 – Set - 7/8" diameter X 30" long iron rods with 2" diameter Lincoln Co. aluminum cap.

#### Coordinate Table

	County Provided	2022 Measurement	Difference
North	211663.307	211663.301	0.01
East	356956.217	356956.316	-0.10

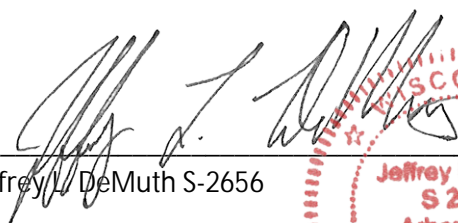
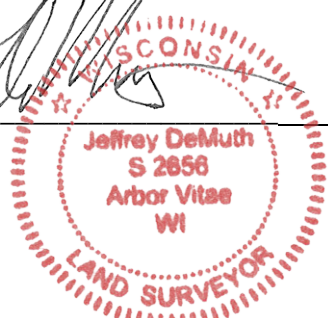
Established coordinates match existing calculated coordinates within reason.

Request Data Log for more information.

#### Additional Notes:

Corner falls  $\pm 1'$  south of Coffee Creek Road centerline and is  $\pm 16''$  below road grade.

Road base is corduroy, County Surveyor allowed a rod for corner monument.

  
 Jeffrey L. DeMuth S-2656
 
 October 7, 2022  
 Date

43405140020\_Mon-N



43405140020\_North



43405140020\_West



43405140020\_South



43405140020\_East

