

# U.S. PUBLIC LAND SURVEY MONUMENT RECORD

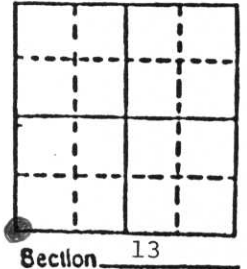
**Note:** This form is intended and designed to fulfill all requirements of Wisconsin Administrative Code, Chapter A-E 5.02, U.S. Public Land Survey Monument Record (3) (a) (b) (c) (d) (e) (f) (g) (h) (i). An additional sheet may be added if necessary to conform with said requirements.

(a) Corner location: Township 34 North

Range 5 East

Town Tomahawk

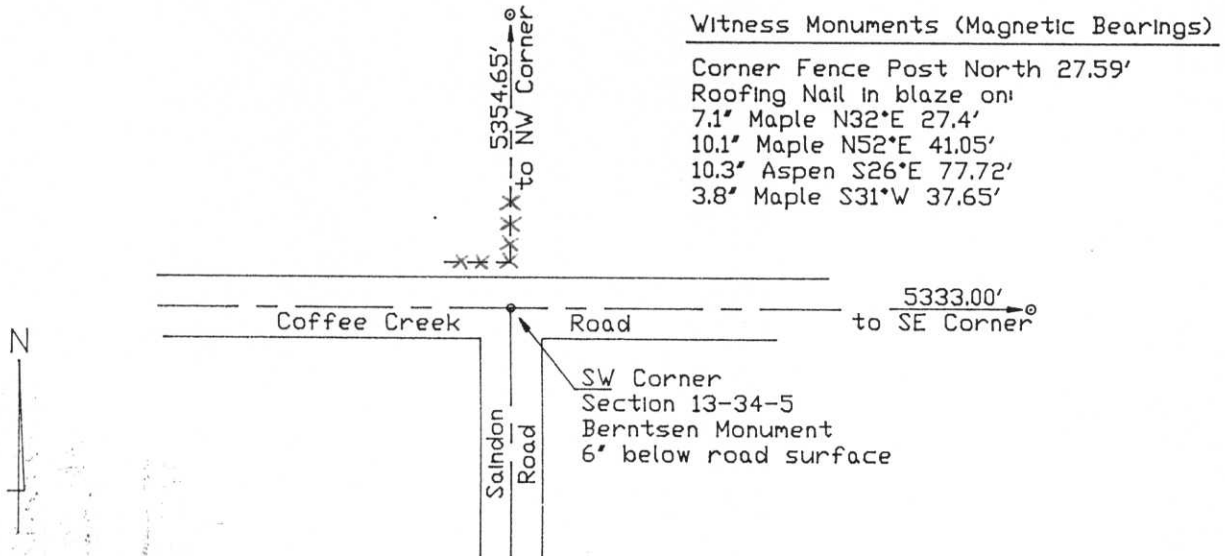
County Lincoln



b) (f) (g) (h) Description of monument found at this corner and if it was accepted, state all evidence (material, testimonial, occupational, plats, records, other monuments) used as a basis for accepting. If not accepted or if nothing was found, state evidence used as basis for establishing location. If reestablished through lost corner proportionate methods, indicate all monuments, distances and directions used to establish.

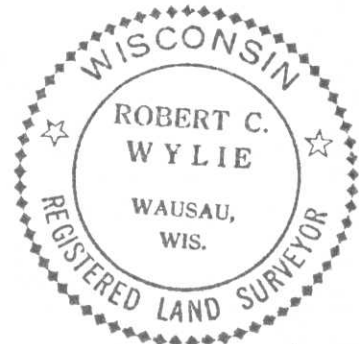
Found no corner evidence at this location and no quarter corners or section corners to the west or south to allow double proportionate methods. Set corner at intersection of Coffee Creek Road and Saindon Road in line with old fence corner and fence line running to the north. The proportions of the resulting lengths of the south and west section lines to the original government survey lengths were very close to the proportions of the east and north lines of this section which were already monumented. The line length proportions compared favorably to those in seven other sections in the survey project which included this section.

c) (d) (e) Plan view of corner with ties to at least 4 witness monuments. If in disagreement with previously established corner, show the distances between the two corners and also indicate the ties to the disputed corner.



(i) I, Robert C. Wylie, RLS-66  
 (Type or print name) certify that the corner location on this record was determined by me or under my direction and control and that this U.S. Public Land Survey Monument Record is correct and complete to the best of my knowledge and belief.

Robert C. Wylie      Aug 2, 1990  
 Signature      Date



Index No. M-21



15 2:53 PM



151000

15 2:55 PM



15 2:54 PM



15 2:56 PM