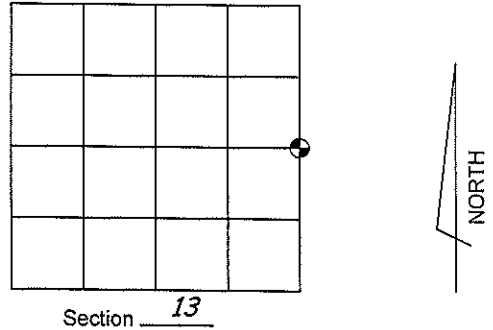


# U.S. PUBLIC LAND SURVEY MONUMENT RECORD

Note: This form intended and designed to fulfill all requirements of Wisconsin Administrative Code, Chapter A-E 5.02, U.S. Public Land Survey Monument Record (3)(a)(b)(c)(d)(e)(f)(g)(h)(i). An additional sheet may be added if necessary to conform with said requirements.

(a) Corner Location: Township 34 North  
Range 5 East

Town / City / Village TN. TOMAHAWK  
County LINCOLN

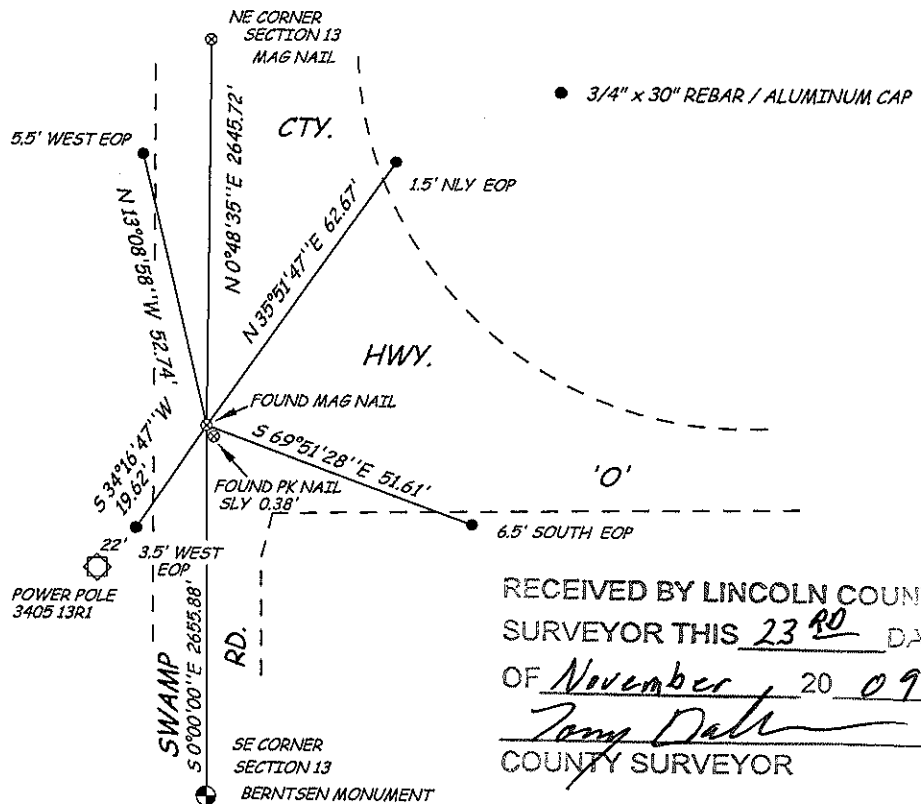


(b)(f)(g)(h) Description of monument found at this corner and if it was accepted, state all evidence (material, testimonial, occupational, plats, records, other monuments) used as a basis for accepting. If not accepted or if nothing was found, state evidence used as basis for establishing location. If reestablishing through lost corner proportionate methods, indicate all monuments, distances and directions used to establish.

*IN AUGUST OF 1986 LESTER SCHMIT FOUND THE REMAINS OF A WOOD POST AT THE SOUTHERLY & WESTERLY EXTENSIONS OF THE C/L C/L OF CTY. HWY. 'O' & SWAMP ROAD. AT THAT LOCATION HE REPLACED THE WOOD POST WITH A BERNTSEN MONUMENT AND ESTABLISHED 4 WITNESS TIES - 3 OF WHICH FELL IN THE INTERSECTION OF CTY. HWY. 'O' & SWAMP ROAD - AT A LATER DATE, THE COUNTY HIGHWAY DEPT. REBUILT THE INTERSECTION AND PAVED OVER THE CORNER LOCATION AND THE WITNESS PIPES*

*NOVEMBER 2009 CORNER POSITION WAS RE-ESTABLISHED BY THE COUNTY SURVEYOR WITH A MAG NAIL IN THE INTERSECTION OF SWAMP ROAD AND CTY. HWY. 'O' IN ADDITION, FOUND A SMALL PK NAIL SOUTHERLY OF MAG NAIL 0.38'*

(c)(d)(e) Plan view of corner with ties to at least 4 witness monuments. If in disagreement with previously established corner, show the distances between the two corners and also indicate the ties to the disputed corner.



RECEIVED BY LINCOLN COUNTY SURVEYOR THIS 23<sup>RD</sup> DAY OF November 20 09  
*Tom Dahl*  
COUNTY SURVEYOR

(i) I, David L. Lemke, RLS - 1845, hereby certify that the corner location shown hereon was determined by me under my direction and control and that this U.S. Public Land Survey Monument Record is correct and complete to the best of my knowledge and belief.

*David L. Lemke*  
2009A  
DAVID L. LEMKE  
3-1845  
TOMAHAWK NOV 20 2009  
LAND SURVEYOR

Index No. K-25

