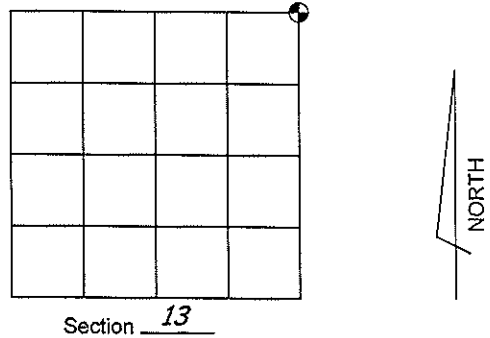


U.S. PUBLIC LAND SURVEY MONUMENT RECORD

Note: This form intended and designed to fulfill all requirements of Wisconsin Administrative Code, Chapter A-E 5.02, U.S. Public Land Survey Monument Record (3)(a)(b)(c)(d)(e)(f)(g)(h)(i). An additional sheet may be added if necessary to conform with said requirements.

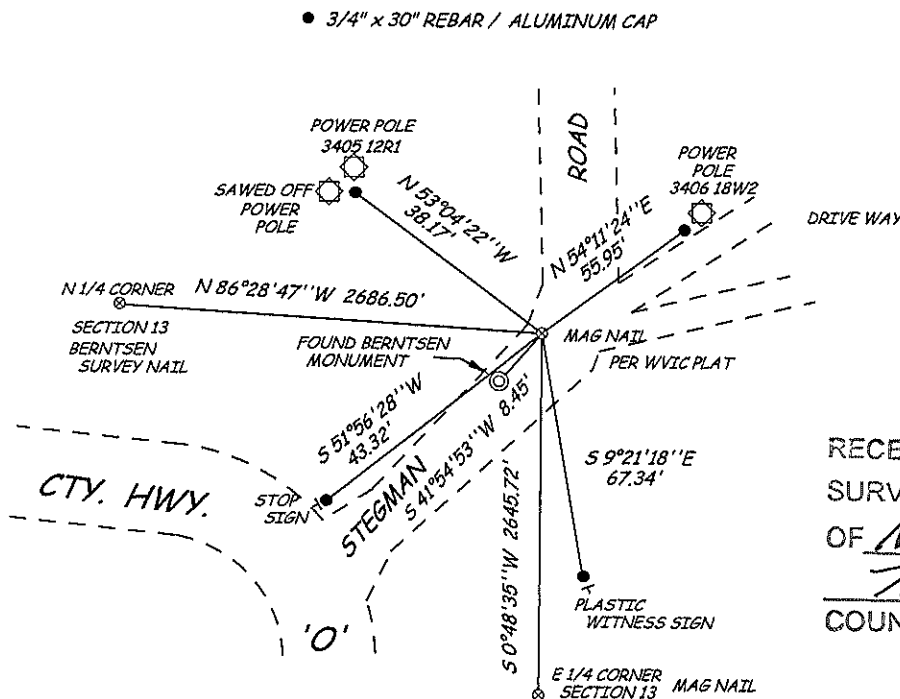
(a) Corner Location: Township 34 North
 Range 5 East
 Town / City / Village TN. TOMAHAWK
 County LINCOLN



(b)(f)(g)(h) Description of monument found at this corner and if it was accepted, state all evidence (material, testimonial, occupational, plats, records, other monuments) used as a basis for accepting. If not accepted or if nothing was found, state evidence used as basis for establishing location. If reestablishing through lost corner proportionate methods, indicate all monuments, distances and directions used to establish.

IN 1966 NORTHWOODS SURVEYORS SET A 1" IRON PIPE ON THE EXTENSION OF A FENCE LINE AND THE C/L OF THE ROAD. IN 1979 LESTER SCHMIT SET A BERNTSEN MONUMENT AT THE LOCATION OF A FOUND 2" IRON PIPE IN 1994 CHARLES WINKLER SET A SECOND BERNTSEN MONUMENT IN THE LOCATION OF NORTHWOODS SURVEYORS PREVIOUS TIES IN NOVEMBER OF 2009 USING THE SECTION SUMMARY BY WISCONSIN VALLEY IMPROVEMENT COMPANY DATED APRIL 30, 1990. I SET A MAG NAIL AT THE LOCATION SHOWN ON THAT PLAT. THE CORNER FALLS WITHIN THE TRAVELED PORTION OF STEGMAN ROAD IN A REPAIR AREA FOR CULVERT REPLACEMENT. A BERNTSEN MONUMENT WAS FOUND +/- 6" BELOW THE ROAD SURFACE 8.45 FEET SOUTH OF THE WVIC CORNER POSITION. THE 4" SQUARE CONCRETE MONUMENT IS STILL THERE BUT LOOKS TO HAVE BEEN PUSHED OUT OF POSITION - ALSO THE SAWED OFF POWER POLE AND THE FIELD STONE BUILDING WERE FOUND THERE BUT THE TIES DISTANCES TO BOTH DO NOT FIT AS SHOWN ON CHARLES WINKLERS TIE SHEET - NO OTHER CORNER TIES WERE FOUND

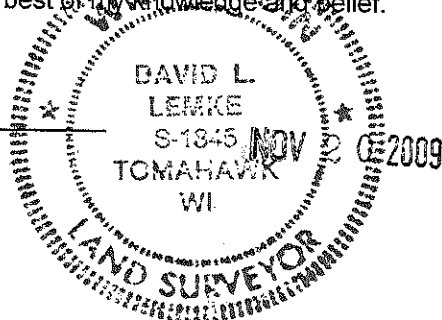
(c)(d)(e) Plan view of corner with ties to at least 4 witness monuments. If in disagreement with previously established corner, show the distances between the two corners and also indicate the ties to the disputed corner.



RECEIVED BY LINCOLN COUNTY SURVEYOR THIS 23RD DAY OF November 20 09
Tom Deller
 COUNTY SURVEYOR

(i) I, David L. Lemke, RLS - 1845, hereby certify that the corner location shown hereon was determined by me under my direction and control and that this U.S. Public Land Survey Monument Record is correct and complete to the best of my knowledge and belief.


 20009A



Index No. F-25

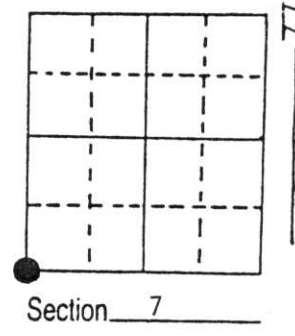
U.S. PUBLIC LAND SURVEY MONUMENT RECORD

Note: This form is intended and designed to fulfill all requirements of Wisconsin Administrative Code, Chapter A-E 5.02, U.S. Public Land Survey Monument Record (3) (a) (b) (c) (d) (e) (f) (g) (h) (i). An additional sheet may be added if necessary to conform with said requirements.

(a) Corner location: Township 34 North
 Range 6 East

Town/~~City/Village~~ Bradley

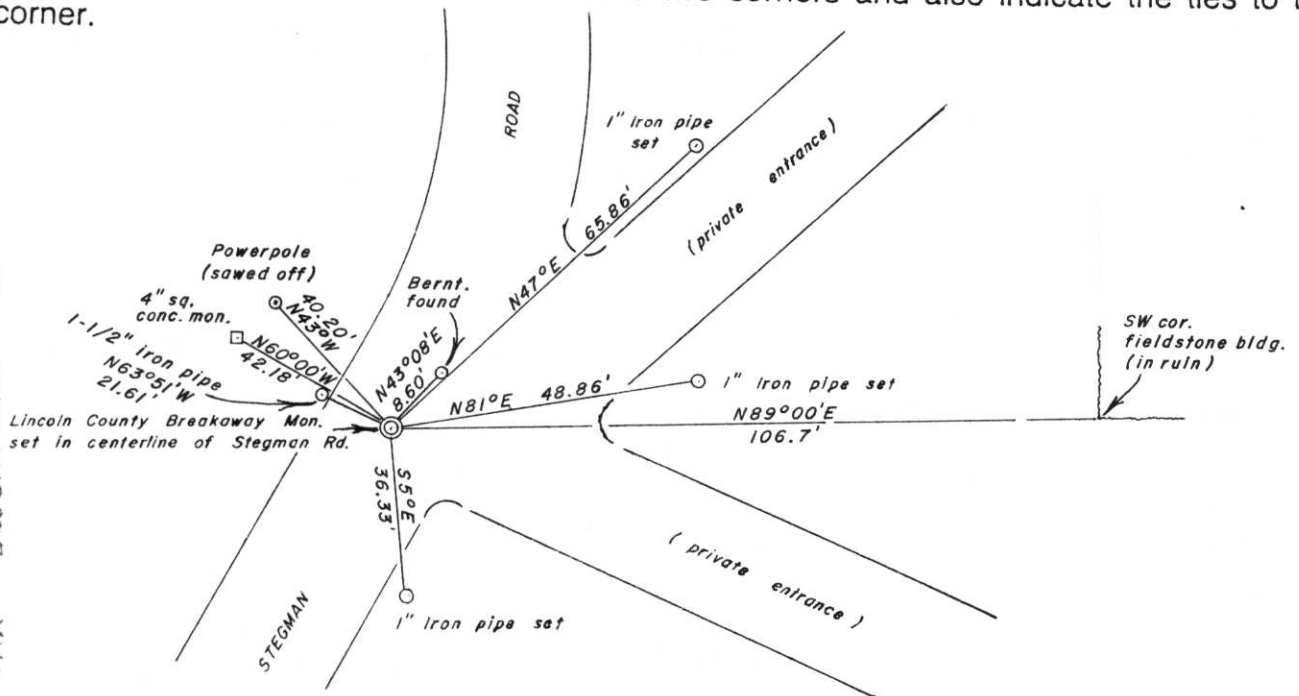
County Lincoln



(b) (f) (g) (h) Description of monument found at this corner and if it was accepted, state all evidence (material, testimonial, occupational, plats, records, other monuments) used as a basis for accepting. If not accepted or if nothing was found, state evidence used as basis for establishing location. If reestablished through lost corner proportionate methods, indicate all monuments, distances and directions used to establish.

- August, 1851 - James Marsh, Deputy Surveyor, set post for corner location. Bearing trees: 16" Tamarack, S60°E, 33 lks; 18" Tamarack, N50°E, 45 lks; 10" Spruce, N80°W, 181ks.
- 1966 - Northwoods Surveyors found no evidence of corner. They set a 1" iron pipe on extension of old fence and centerline of road. They tied said iron pipe to the southwest corner of a fieldstone building (N87°E, 106.7') and a power pole (N45°W, 40.2').
- 1979 - Lester Schmit (S-1192) found and accepted a 2" iron pipe for the corner location. He replaced the 2" iron pipe with a Berntsen monument.
- 1994 - I set a Berntsen breakaway monument to mark the corner location based on Northwoods' previous ties to the corner of the fieldstone building and the previous power pole. This location does not match Lester Schmit's by 8.6'.

(c) (d) (e) Plan view of corner with ties to at least 4 witness monuments. If in disagreement with previously established corner, show the distances between the two corners and also indicate the ties to the disputed corner.



RECEIVED LINCOLN COUNTY COURT, U.S. H.S. 21 DAY OF June 1995.
 Tax Description Office
Pat Schmit

(i) I, Charles E. Winkler S1431
 (type or print name) certify that the corner location on this record was determined by me or under my direction and control and that this U.S. Public Land Survey Monument Record is correct and complete to the best of my knowledge and belief.

Charles E. Winkler 11/30/1994
 Signature Foltz & Associates, Inc. Date



Index No. I-1

U.S. PUBLIC LAND SURVEY MONUMENT RECORD

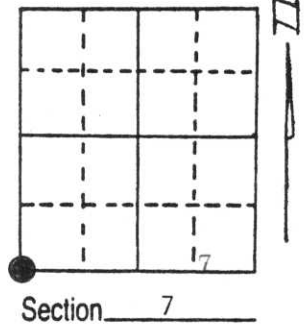
Note: This form is intended and designed to fulfill all requirements of Wisconsin Administrative Code, Chapter A-E 5.02, U.S. Public Land Survey Monument Record (3) (a) (b) (c) (d) (e) (f) (g) (h) (i). An additional sheet may be added if necessary to conform with said requirements.

(a) Corner location: Township 34 North

Range 6 East
Bradley

Town/City/Village _____

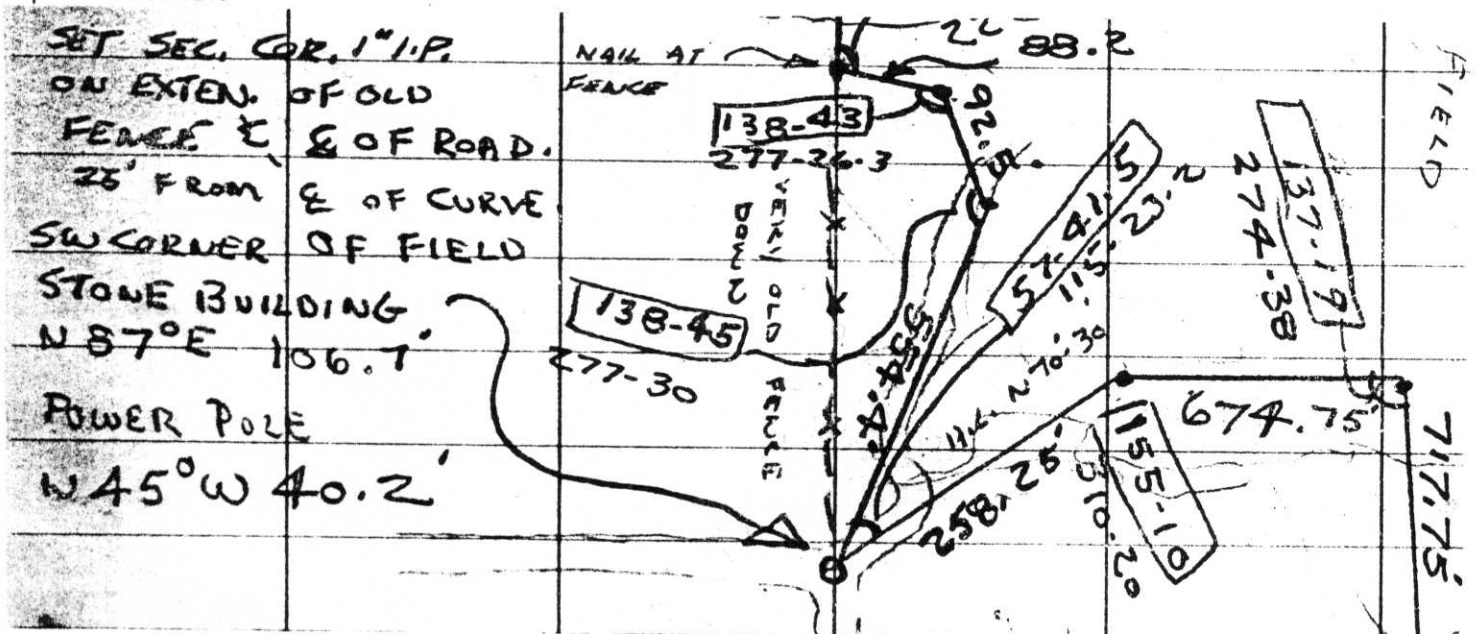
County Lincoln



(b) (f) (g) (h) Description of monument found at this corner and if it was accepted, state all evidence (material, testimonial, occupational, plats, records, other monuments) used as a basis for accepting. If not accepted or if nothing was found, state evidence used as basis for establishing location. If reestablished through lost corner proportionate methods, indicate all monuments, distances and directions used to establish.

This corner was searched for by a survey crew from Northwoods Surveyors, Inc. of Minocqua, Wisconsin under the supervision of Registered Land Surveyor James G. Griffin as part of the boundary work required for the plat of Spirit Haven in the E $\frac{1}{2}$ of the NW $\frac{1}{4}$ of Section 7. The original field notes of that survey dated November 29, 1966 state "Looked for SW section corner, found no corner only fence from north & curve of road as on green sheet. Set Sec. Cor. 1" I.P. on exten. of old fence & centerline of road. 25' from centerline of curve. SW corner of field stone building N87°E 106.7' Power Pole N45°W 40.2'". On bearing base from plat of Spirit Haven, N0°21'E, 5218.92' to NW section corner, and S88°35'E, 2740.06' to S $\frac{1}{4}$ corner per Northwoods' section worksheet. Nail used by Northwoods Surveyors to tie this corner is N71°24'E, 258.25' from the section corner they set. This might not be the same corner that was recovered and restored by Lester J. Schmit in 1979, as he found a 2" rather than a 1" iron pipe, and his tie to power pole #3405-12R1 is N57°W, 40.29' instead of N45°W, 40.2'".

(c) (d) (e) Plan view of corner with ties to at least 4 witness monuments. If in disagreement with previously established corner, show the distances between the two corners and also indicate the ties to the disputed corner.



This monument record prepared on June 21, 1994 by Stuart L. Foltz, Registered Land Surveyor #S-1170, c/o Inman-Foltz & Associates, Inc. Minocqua, WI from the original Northwoods Surveyors, Inc. survey file

(i) I, _____
(type or print name) certify that the corner location on this record was determined by me or under my direction and control and that this U.S. Public Land Survey Monument Record is correct and complete to the best of my knowledge and belief.

Stuart L. Foltz _____
Signature Date 6/21/94



Index No. I-2

CERTIFIED LAND CORNER RESTORATION

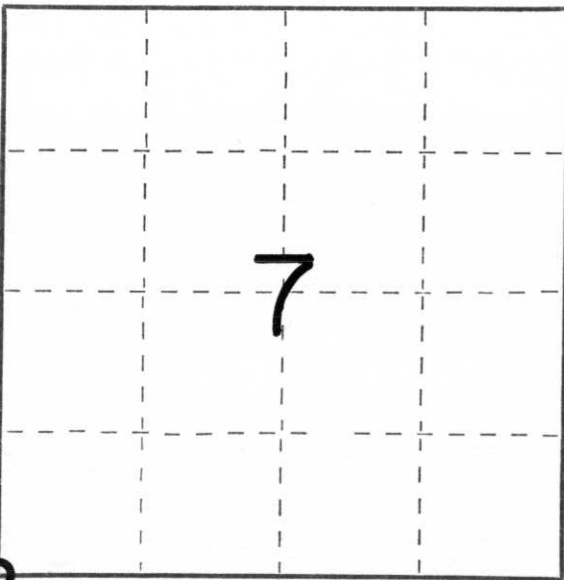
Index No. I-1

State of Wisconsin }
County of Lincoln } ss.

I Lester J. Schmit, do hereby certify that on the 9th day of November, 1979, I found evidence of the Southwest corner of Section 7 Township 34 North, North, Range 6 East, Fourth, Principal Meridian, as described hereon; and that from this evidence I established a new monument and accessories as described hereon to perpetuate the original location of this corner.

Resident witnesses:

.....
.....
.....



○ = Corner monument restored.

History of original corner establishment:

Surveyor:: James M. Marsh
Date: August 1851
Monumentation: Wood Post
Witnesses: Tamarack 16", S 60° E, 33 links
Tamarack 18", N 50° E, 45 links
Spruce 10", N 80° W, 18 links

Description of corner evidence found: 2" iron pipe for corner, witnessed by:
3" x 3" concrete bench mark, N 71° W, 44.81'

Description of monument and accessories I established to perpetuate the original location of this corner.

30" Berntsen monument set to replace 2" iron pipe as corner. Monument top is 4" below gravel road surface. Witnessed by

P.K. Nail in Power pole # 3406-7L13, N 49° E, 58.43'
P.K. Nail in 9" Balsm, S 54° E, 152.02"
P.K. Nail in Power pole # 3405-12R1, N 57° W, 40.29'

Dated at Tomahawk, Wis., this 9th day of November, 1979.

Signature Lester J. Schmit Title Land Surveyor Registration No. S 1192
(County Surveyor, Registered Land Surveyor, or other duly authorized official)

Office of Register of Deeds, County of _____, I hereby certify that the within instrument was filed in this office for record on the _____ day of _____, 19____ at _____ o'clock _____ M.

.....
(Register of Deeds)

By _____ Deputy