

U.S. PUBLIC LAND SURVEY MONUMENT RECORD

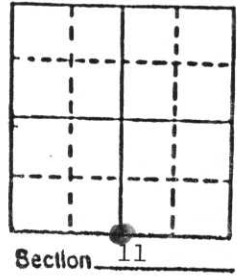
Note: This form is intended and designed to fulfill all requirements of Wisconsin Administrative Code, Chapter A-E 5.02, U.S. Public Land Survey Monument Record (3) (a) (b) (c) (d) (e) (f) (g) (h) (i). An additional sheet may be added if necessary to conform with said requirements.

(a) Corner location: Township 34 North

Range 5 East

Town Tomahawk

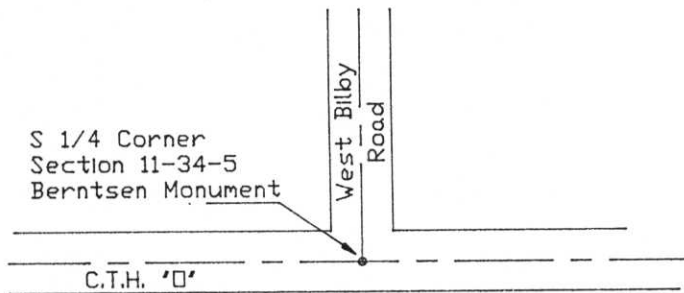
County Lincoln



b) (f) (g) (h) Description of monument found at this corner and if it was accepted, state all evidence (material, testimonial, occupational, plats, records, other monuments) used as a basis for accepting. If not accepted or if nothing was found, state evidence used as basis for establishing location. If reestablished through lost corner proportionate methods, indicate all monuments, distances and directions used to establish.

No corner or witness monuments were found here, but this corner had been placed by Genisot Engineering (see their drawing #4729 dated 1973) using the SE section corner which they found. Retraced this survey using the SE section corner and the S 1/16 corner of the SE quarter, for which I found an iron pipe witness and reset this corner, using a Berntsen monument with the top 1" below the blacktop road surface. Monument is about 16" south of CTH "0" centerline at intersection with West Bilby Road.

c) (d) (e) Plan view of corner with ties to at least 4 witness monuments. If in disagreement with previously established corner, show the distances between the two corners and also indicate the ties to the disputed corner.



Witness Monuments (Magnetic Bearings)

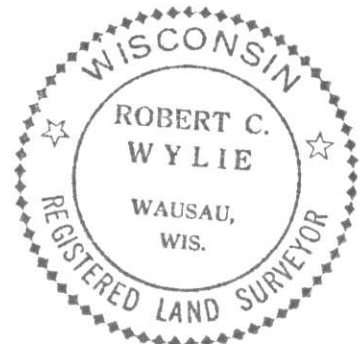
- 1' Iron Pipe S04°W 31.22'
- P.K. Nail in Stop Sign Post N38°W 37.88'
- Roofing Nail in blaze on Basswood (Twin) S25°E 41.60'
- 9.1' Basswood (Twin) N45°E 69.1'
- 9.6' Basswood N46°W 99.3'

(i) I, Robert C. Wylie, RLS-66

(type or print name) certify that the corner location on this record was determined by me or under my direction and control and that this U.S. Public Land Survey Monument Record is correct and complete to the best of my knowledge and belief.

Signature

Date



Index No. I-19



LINGCOLN COUNTY
SURVEY FOR DISTURBING
MARKER
PENNEY VEY



