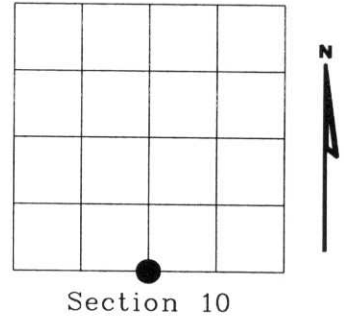


# U.S. PUBLIC LAND SURVEY MONUMENT RECORD

NOTE: This form is intended and designed to fulfill all requirements of Wisconsin Administrative Code, Chapter A-E 7.08 U.S. Public Land Survey Monument Record (3)(a)(b)(c)(d)(e)(f)(g)(h)(i). An additional sheet may be added if necessary to conform with said requirements.

(a) Corner location: Township 34 North  
 Range 05 East  
 Town of TOMAHAWK  
 LINCOLN County, Wisconsin



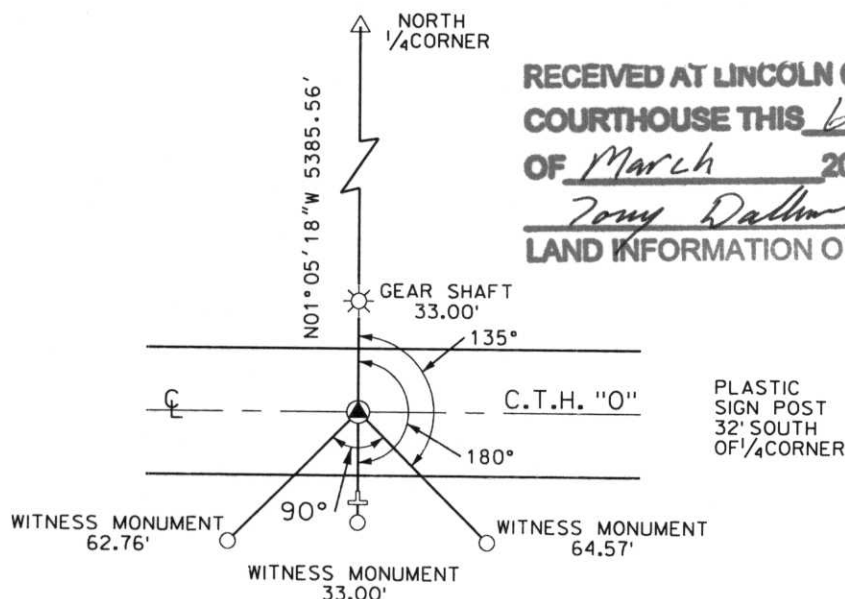
Section 10

(b)(f)(g)(h) Description of monument found at this corner and if it was accepted, state all evidence (material, testimonial, occupational, plats, records, other monuments) used as a basis for accepting. If not accepted or if nothing was found, state evidence used as basis for establishing location. If reestablished through lost corner proportionate methods, indicate all monuments, distances and directions used to establish. Indicate type of monument found or set and sign post.

1965 - EDWARD O'PALMER - 40.05 CHAINS SET QUARTER POST  
 B.T.'S  
 TAM. 10" N10° W, 8 LKS.  
 TAM. 10" S 14° W, 15 LKS.

2000 - I FIND 1 1/4" DIAMETER GEAR SHAFT ON NORTH SIDE OF COUNTY TRUNK HIGHWAY "O", A BLUE PAINTED LINE NORTH AND A OLD BARBED WIRE FENCE AND POST ON SOUTH SIDE OF COUNTY TRUNK HIGHWAY "O" IN SOUTH DIRECTION. I EXTENDED LINE FROM NORTH 1/4 CORNER THROUGH GEAR SHAFT 33.00'. SET 1" DIAMETER SURVEY MARKER AND WITNESSES AS SHOWN BELOW.

(c)(d)(e) Plan view of corner with ties to at least 4 witness monuments. If in disagreement with previously established corner, show the distances between the two corners and also indicate the ties to the disputed corner.



RECEIVED AT LINCOLN COUNTY  
 COURTHOUSE THIS 6<sup>TH</sup> DAY  
 OF March 20 01  
*Zony Dalman*  
 LAND INFORMATION OFFICE

PLASTIC  
 SIGN POST  
 32' SOUTH  
 OF 1/4 CORNER

(i) I, Dennis B. Roberts, Registered Land Surveyor \*S-1863, hereby certify that the corner location on this record was determined by me or under my direction and control and that this U.S. Public Land Survey Monument Record is correct and complete to the best of my knowledge and belief.



*Dennis B. Roberts*  
 Signature

02-27-2001  
 Date

Index No. I-15





