

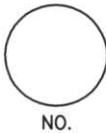
# LINCOLN COUNTY U.S. PUBLIC LAND SURVEY MONUMENT LOCATION RECORD

CORNER NUMBER \_\_\_\_\_

SECTION 8

TOWNSHIP 34

RANGE 5E



LANDMARK       BENCHMARK \_\_\_\_\_  
 FOUND  SET   
 CORNER IDENTITY: FOUND 7/8" REBAR      RESET   
 RE-TIED

TOMAHAWK  
 CITY, VILLAGE, TOWN

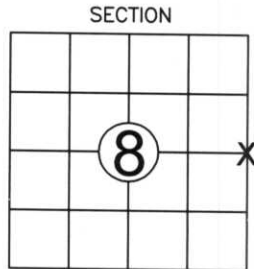
LINCOLN COUNTY COORDINATE: N: 219814.9700  
 E: 343727.9000

ELEVATION-(FEET): \_\_\_\_\_ DATUM: \_\_\_\_\_

WEATHER: CLEAR

DATE OF SURVEY: 4-28-08 TEMPERATURE: 40 °F

SURVEY PARTY: N.W./J.P.



LOCATION  
 (Indicated By X)



**BASIS FOR MONUMENT LOCATION:**  
 (DESCRIBE METHOD OF SURVEY AND CORNER AUTHENTICATION)

A 7/8" REBAR WAS FOUND AT THE CORNER LOCATION. THE MEASUREMENTS TAKEN TO THE SOUTHEAST, NORTHEAST AND WEST CORNERS OF THE SECTION FIT A SECTION SUMMARY ON FILE AT THE LINCOLN COUNTY SURVEYORS OFFICE. THE FOUND CORNER AND TIES DID NOT MATCH THE CURRENT TIE SHEET ON FILE. HELD 7/8" REBAR AS LOCATION AND PERPETUATED THE CORNER AS SHOWN BELOW.



CERTIFIED CORRECT:

Nathan J. Wincentzen  
NATHAN J WINCENTZEN  
 Registered Land Surveyor  
 DATE: 5-19-08

FIELD BOOK NO. 17 PAGE NO. 37

COMPANY RIVERSIDE LAND SURVEYING, LLC

**TIE SKETCH:** SHOW MINIMUM OF FOUR (4) HORIZONTAL TIE DISTANCES TO FIXED WITNESS MONUMENTS. DESCRIBE ALL MONUMENTS FOUND OR SET. CORRECT ALL DISTANCES SHOWN TO STANDARD TEMPERATURE OF 68° F.

- FOUND 7/8" REBAR
- FOUND 3/4" REBAR
- VINYL SURVEY MARKER POST SET

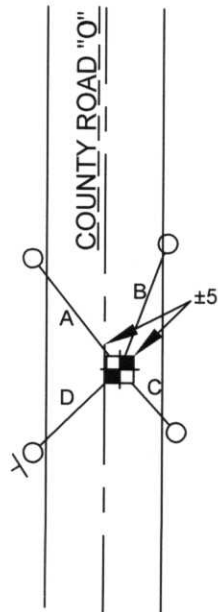
**NOTE**

- ALL BEARINGS ARE REFERENCED TO THE LINCOLN COUNTY COORDINATE SYSTEM
- THIS DRAWING IS NOT TO SCALE

SPIRIT FLOWAGE

SPIRIT FLOWAGE

RECEIVED BY LINCOLN COUNTY SURVEYOR THIS 20<sup>TH</sup> DAY OF May 2008  
Tony Dahl  
 COUNTY SURVEYOR



LINE	BEARING	LENGTH
A	N38°13'16"W	36.91'
B	N20°27'38"E	35.40'
C	S41°54'04"E	22.03'
D	S45°48'19"W	31.49'

6-9

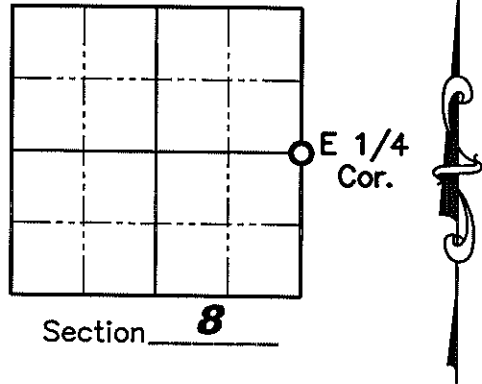
# U.S. PUBLIC LAND SURVEY MONUMENT RECORD

NOTE: This form is intended and designed to fulfill all requirements of Wisconsin Administrative Code, Chapter A-E 7 .08 U.S. Public Land Survey Monument Record (3)(a)(b)(c)(d)(e)(f)(g)(h)(i). An additional sheet may be added if necessary to conform with said requirements.

(a) Corner location: Township 34 North  
 Range 5 East

Town of Tomahawk

County of Lincoln



(b)(f)(g)(h) Description of monument found at this corner and if it was accepted, state all evidence (material, testimonial, occupation, plats, records, other monuments) used as a basis for accepting. If not accepted or if nothing was found, state evidence used as a basis for establishing location. If reestablished through lost corner proportionate methods, indicate all monuments, distances and directions used to establish. Indicate type of monument found or set and sign post.

July 1855 – Jackson L. Prentice set original wood post for corner location with BT's: 40" Pine, N10°E, 318 lks.; 10" Aspen, N16°W 302 lks.

July 7, 1985 – Lester Schmit found no monument to mark the location of the corner which is on a fill across the Spirit River Flowage. He relocated and set the corner using distances by Forest R. Wincentsen and Joseph C. Kirby in subdivision of Section 9 in March 1964. He set a Berntsen monument for corner 100' South of bridge over Spirit River, 4 feet East of the centerline of County Highway "O". The corner was set S00°39'18"W, 2688.86 feet from the Northeast corner of Section 8 and N00°39'18" E, 2623.37 feet from the Southeast corner of Section 8. He set four 5/8" iron rods as witness corner as follows: N39°W, 36.78'; N31°E, 30.22'; S42°E, 22.03'; S45°W, 31.51'.

March 1990 – Robert C. Wylie shows he found a monument at the corner location per Plat of Survey – Lincoln County Land Information Office Number of S110A.

June 6, 1994 – Lester Schmit found the Berntsen monument he previously set in 1986 per Certified Survey Map Number 760 and 761.

April 15, 2008 – Jonathan W. Dulin went to corner and found 3 of Lester Schmits witness corners from 1986. County Highway "O" has been paved recently. We found a strong beep under the pavement and dug for corner in the road and about 1' below grade we found some white power in a 2-3" circle which is the remains of the Berntsen monument. Using this location and the existing ties, we set a 7/8" by 30" iron rebar about 3" below the blacktop surface and witnessed the corner as shown on sheet 2 hereof.

(c)(d)(e) Plan view of corner with ties to at least 4 witness monuments. If in disagreement with previously established corner, show the distances between the two corners and also indicate the ties to the disputed corner.

**See Sheet 2 hereof**

(i) I, Jonathan W. Dulin, certify that the corner location on this record was determined by me under my direction and control and that this U.S. Public Land Survey Monument is correct and complete to the best of my knowledge and belief.

Signature Jonathan W. Dulin

Date 4/15/08

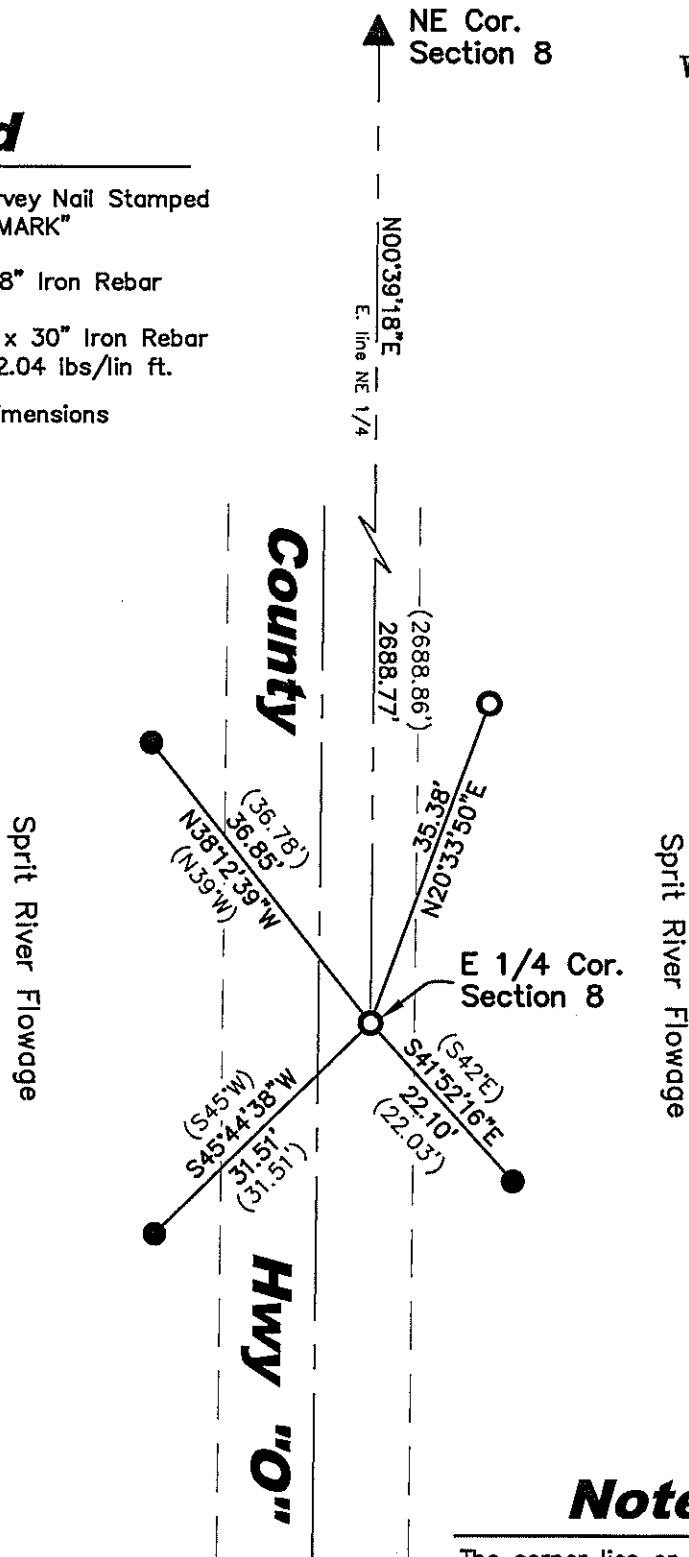
RECEIVED BY LINCOLN COUNTY  
 SURVEYOR THIS 20TH DAY  
 OF October 20 08  
Tom Dull  
 COUNTY SURVEYOR

Index No. G-9

# U.S. PUBLIC LAND SURVEY MONUMENT RECORD

## Legend

- ▲ Found Survey Nail Stamped "SURVEY MARK"
- Found 5/8" Iron Rebar
- Set 7/8" x 30" Iron Rebar Weighing 2.04 lbs/lin ft.  
(43.57') Record Dimensions



## Note:

The corner lies on a fill area over the Sprit River Flowage, 5' East of the centerline of County Highway "O" and 96' South of the bridge over the river.

## GRAPHIC SCALE



( IN FEET )

# U.S. PUBLIC LAND SURVEY MONUMENT RECORD

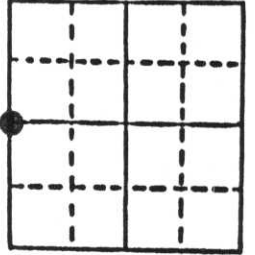
Note: This form is intended and designed to fulfill all requirements of Wisconsin Administrative Code, Chapter A-E 5.02, U.S. Public Land Survey Monument Record (3) (a) (b) (c) (d) (e) (f) (g) (h) (i). An additional sheet may be added if necessary to conform with said requirements.

(a) Corner location: Township 34 North

Range 5 East

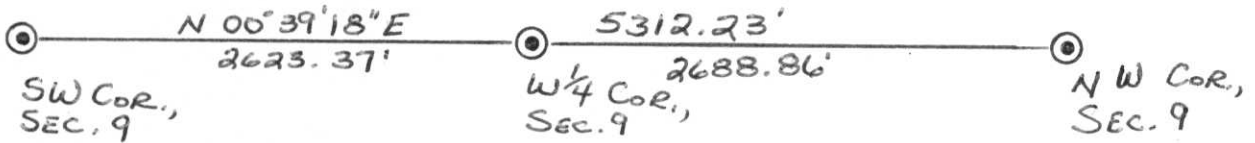
Town Tomahawk

County Lincoln



Section 9

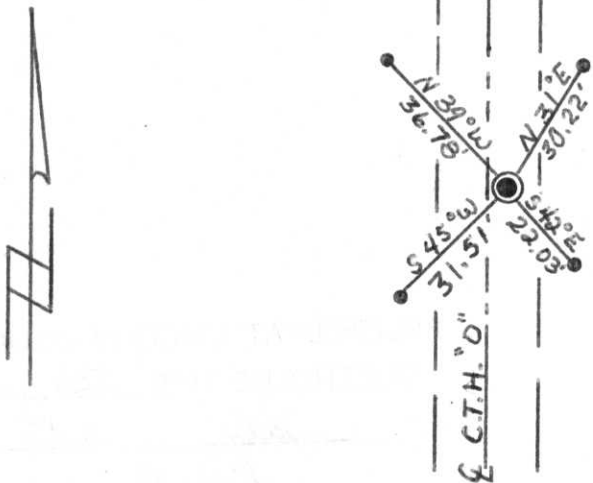
b) (f) (g) (h) Description of monument found at this corner and if it was accepted, state all evidence (material, testimonial, occupational, plats, records, other monuments) used as a basis for accepting. If not accepted or if nothing was found, state evidence used as basis for establishing location. If reestablished through lost corner proportionate methods, indicate all monuments, distances and directions used to establish. Original Gov't. Survey: Jan. 1855 by Jackson Prentice, set wood post for corner with bearings, pine 40 N 10° E 318 links & aspen 10 N 16° W 302 links. I found no monument to mark the location of the corner which is on a fill across the Spirit River Flowage. Relocated & set the corner using distances by Forest R. Wincentsen & Joseph C. Kirby in subdivision of Section 9 in March 1964.



c) (d) (e) Plan view of corner with ties to at least 4 witness monuments. If in disagreement with previously established corner, show the distances between the two corners and also indicate the ties to the disputed corner.

### LEGEND

- Berntsen monument
- 5/8" iron rod



Set Berntsen monument for corner 100' south of bridge over Spirit River, 4' east of the centre-line of County Trunk Highway "O".

(i) I, Lester J. Schmit  
(type or print name) certify that the corner location on this record was determined by me or under my direction and control and that this U.S. Public Land Survey Monument Record is correct and complete to the best of my knowledge and belief.

Lester J. Schmit 7 July 85  
Signature Date



Index No. 6-9



SUN DISTRICT COUNTY  
BRYAN PARKER  
MARVELER



