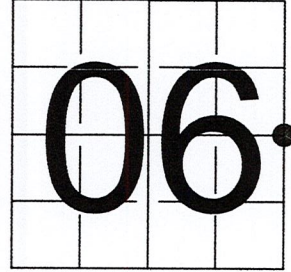


U S PUBLIC LAND SURVEY MONUMENT RECORD

NOTE: This form is intended and designed to fulfill all requirements of Wisconsin Administrative Code, Chapter A-E 7.08 U.S. Public Land Survey Monument Record (3) (a-i)

A-E 7.08(3)(a) Identity of corner:
 EAST 1/4 CORNER SECTION 06,
 TOWNSHIP 34 NORTH,
 RANGE 05 EAST OF THE 4TH PM,
 TOWN OF TOMAHAWK,
 COUNTY OF LINCOLN

WISCORS - LINCOLN COUNTY
 N: 224,990.383 USft (224,990.692)
 E: 338,533.921 USft (338,534.160)
 Datum: NAD83 (2011)
 GNSS Method RTN - Direct
 GNSS Control WISCORS VRS



The coordinate value shown has been verified by the average of two or more GPS observations at a markedly different time. Coordinates shown in parenthesis are provided by Lincoln County.

A-E 7.08(3)(b)

Original Surveyor: Jackson L. Prentice

Date of Original Survey	Commenced:	July 6, 1855	Original Accessories:		
	Completed:	July 12, 1855	Tamarac	9	S 61° E 8 Links
			Tamarac	10	N 74° W 19 Links

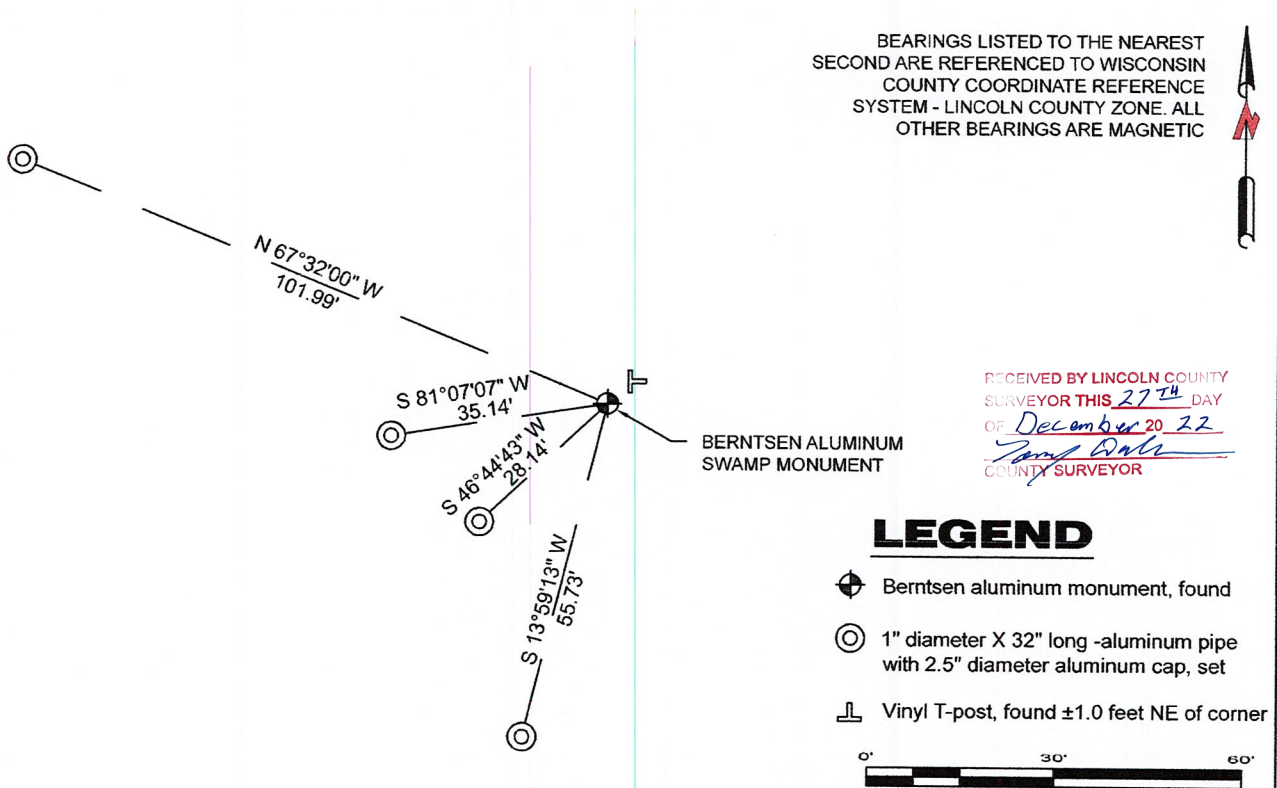
February 19, 2003 - Surveyor 2299 - William W. Nutter - indicate this position as "1-1/2 ip" on Lincoln County map S461A.

December 20, 2012 - Surveyor 2729 - Gregory S. Maines - indicate this position as "N: 224990.69, E: 338534.163 coordinates provided by Lincoln County Surveyor" on Lincoln County Section Summary - Section 6, T 34 N, R 5 E.

May 6, 2015 - Surveyor 2405 - Anthony R. Dallman - indicates this position as "found Berntsen aluminum swamp rod, previously set by County Surveyor" on Lincoln County map S533B.

October 28, 2022 - While performing the 2022 Lincoln County PLSS Corner Remonumentation and GPS Services project, I found a Berntsen aluminum "swamp monument" - 1" diameter aluminum pipe with a 2.5" diameter aluminum cap, stamped to identify corner, near the computed position provided by Lincoln County. The monument is straight and firm, in a floating bog. I established 4 new reference monuments as shown below.

A-E 7.08(3)(c)(d) Plan view of corner with references to at least 4 witness monuments.



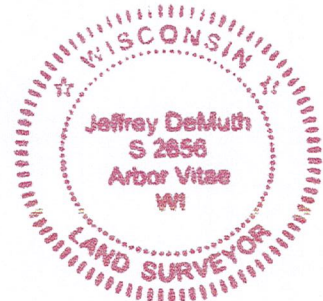
A-E 7.08(3)(e) 1855 Surveyor set a post, 2003 Surveyor had a 1 1/2" iron pipe, 2012 Surveyor had coordinates, 2015 Surveyor had a Berntsen swamp rod. I found a Berntsen aluminum "swamp monument" - 1" diameter aluminum pipe with a 2.5" diameter aluminum cap.

A-E 7.08(3)(f) I accept this monument as a FOUND PERPETUATED LOCATION of the corner.

A-E 7.08(3)(g)(h) This corner was not determined through lost-corner-proportionate methods.

A-E 7.08(3)(i) I, Jeffrey L. DeMuth, Professional Land Surveyor No. S-2656, hereby certify that the corner location on this record was determined by the Lincoln County Surveyor, and the monuments found or set as shown hereon were measured by me or under my direction and control, and that this U.S. Public Land Survey Monument Record is correct and complete to the best of my knowledge, and belief.

SIGNATURE *Jeffrey L. DeMuth* DATE December 14, 2022



C-5

REPORT

2022-Lincoln County PLSS Corner Remonumentation and GPS Services

Wisconsin Corner Point Identification Number: 43405062000

Surveyor: Jeffrey L. DeMuth – S2656

Corner monument: Found Berntsen aluminum “swamp monument”, 1” diameter pipe with a 2.5” diameter cap.

Field Book: Cardinal North – Lincoln Co. Remon. – 2022-00

Page: 62

Horizontal Datum: WisCRS – Lincoln County Zone – NAD83(2011)

Date / time of initial measurement:

October 28, 2022 - Start 13:06:08 CDT – End 13:20:23 CDT

Reference monuments:

4 – Set - 1” diameter X 32” long aluminum pipe with 2.5” diameter Lincoln Co. aluminum cap.

Coordinate Table

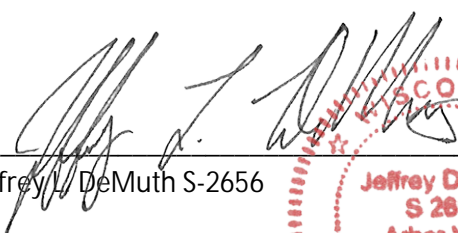
	County Provided	2022 Measurement	Difference
North	224990.692	224990.383	0.31
East	338534.160	338533.921	0.24

Observed coordinates match with existing coordinates within reason.

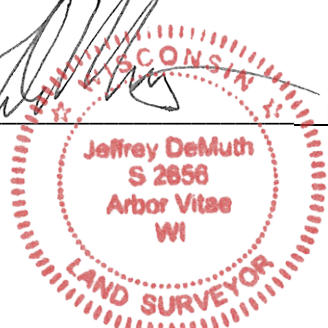
Request Data Log for more information.

Additional Notes:

Monument is in ± 1.5 feet of water and in a floating bog, it was found straight and solid.


Jeffrey L. DeMuth S-2656

November 15, 2022
Date



43405062000_Mon-N



43405062000_North



43405062000_West



43405062000_South



43405062000_East

DISTURB
NEARBY

SM
UA
RI
VE
EE
YR

LOCATION
OF THE
HARBY
MAP TO
BE
PLEASE CONTACT
THE COUNTY
SURVEYORS
OFFICE

A
43405062000

