

Attachment to Tie Sheet E-3, T34N, R5E

I visited corner on 07/23/2013; Book 6, pg. 44. All reference ties shown on tie sheet dated 12/09/1988 were found intact*.

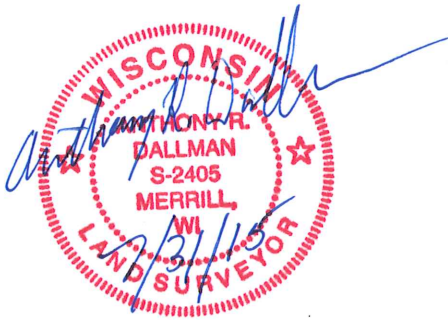
NOTES

- I set a **Berntsen Aluminum Monument**, in the gravel shoulder of State Highway "86" approximately 12" north of the northern edge of asphalt pavement, per the 1988 reference tie distances.
- * The NE tie appears slightly tipped, but remains solid and measures well.
- I set a Vinyl marker post 24.5' north of corner monument.

 7/31/15

Anthony R. Dallman, PLS-2405

Lincoln County Surveyor



E-3

FIELD SURVEY NOTES
E-D-702 6-70

RECEIVED JUN 18 1991

N1/4 Sec 7
T34N R5E
State of Wisconsin / Department of Transportation

CORNER
E3 T34N - R5E

FOUND MONUMENTS SET
BY JAMES D REIN & PUT
OUT LATHZ

APRIL 2 1991

RBS SM GS

TOPOGRAPHY

ALIGNMENT

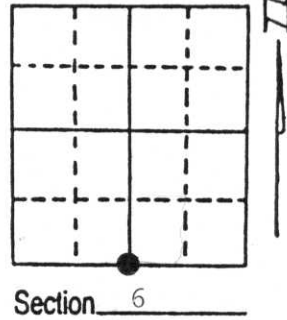
U.S. PUBLIC LAND SURVEY MONUMENT RECORD

Note: This form is intended and designed to fulfill all requirements of Wisconsin Administrative Code, Chapter A-E 7.08 U.S. Public Land Survey Monument Record (3) (a) (b) (c) (d) (e) (f) (g) (h) (i). An additional sheet may be added if necessary to conform with said requirements.

(a) Corner location: Township 34 North
 Range 5 East/West

Town/City/Village Bradley

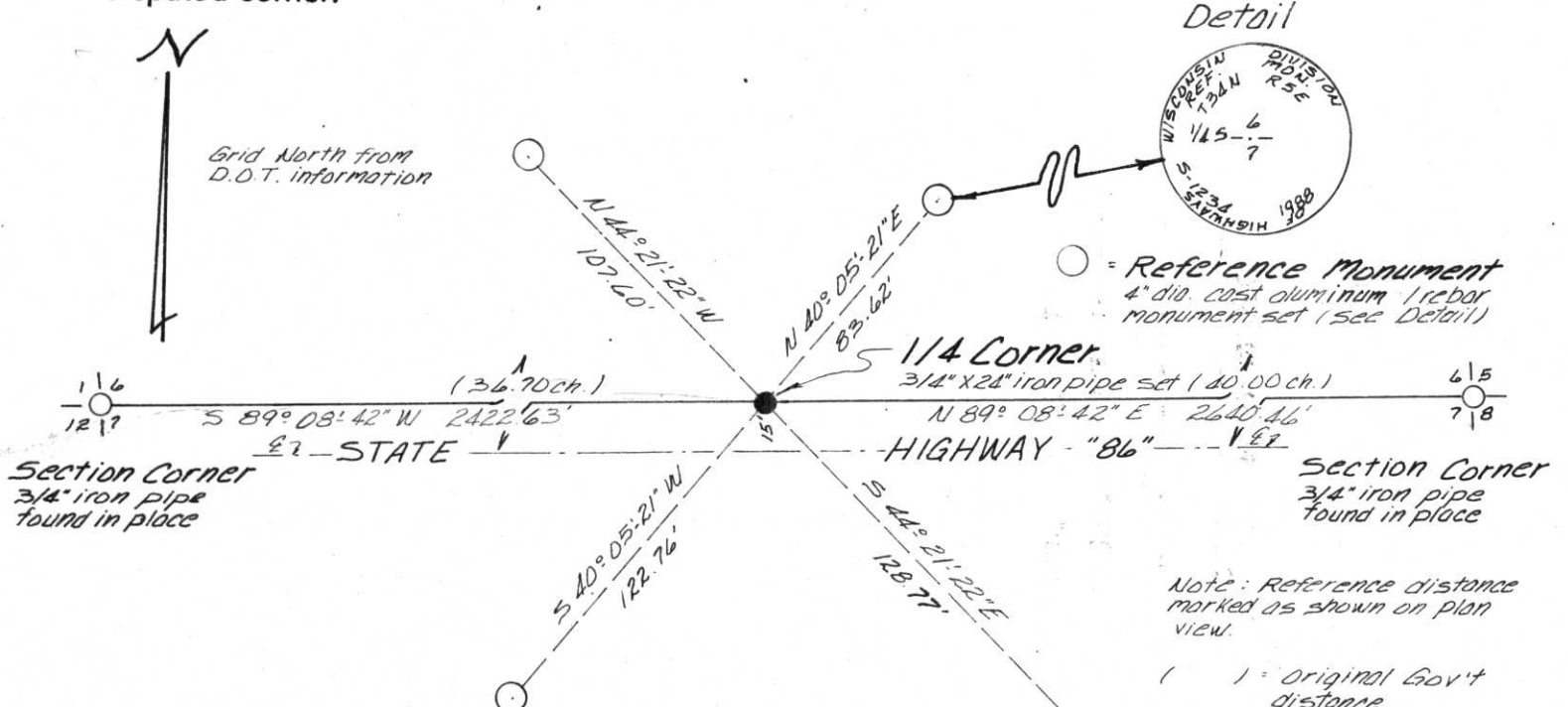
County Tomahawk



(b) (f) (g) (h) Description of monument found at this corner and if it was accepted, state all evidence (material, testimonial, occupational, plats, records, other monuments) used as a basis for accepting. If not accepted or if nothing was found, state evidence used as basis for establishing location. If reestablished through lost corner proportionate methods, indicate all monuments, distances and directions used to establish.

January 1855 - Jackson Prentice, Deputy Surveyor, set $\frac{1}{4}$ post. Bearing trees: 14" Birch N81°W, 38 links; 12" Hemlock, S44°W, 25 links
 Sept. 26, 1973 - Map by Owens Illinois identifies unmonumented corner at proportionate position between section corners for subdivision of Section 7.
 Nov. 11, 1988 - James D. Rein, Registered Land Surveyor, found section corners as identified on sketch. Set $\frac{3}{4}$ " X 24" iron pipe at proportionate distance between section corners. The corner position as re-established is located north of the as-built centerline of State Highway "86" as are both section corners and retracement distance between the section corners is harmonious with the original government record.

(c) (d) (e) Plan view of corner with ties to at least 4 witness monuments. If in disagreement with previously established corner, show the distances between the two corners and also indicate the ties to the disputed corner.



(i) I, James D. Rein RLS No. 1234
 (type or print name) certify that the corner location on this record was determined by me or under my direction and control and that this U.S. Public Land Survey Monument Record is correct and complete to the best of my knowledge and belief.

James D. Rein December 9th, 1988
 Signature Date



Index No. E-3