

U.S. PUBLIC LAND SURVEY MONUMENT RECORD

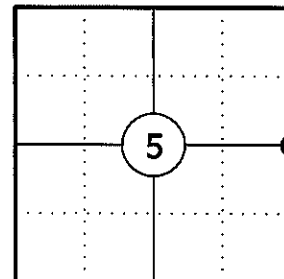
NOTE: THIS FORM IS INTENDED AND DESIGNED TO FULFILL ALL REQUIREMENTS OF WISCONSIN ADMINISTRATIVE CODE CHAPTER A-E 7.08 U.S. PUBLIC LAND SURVEY MONUMENT RECORD (3) (a)(b)(c)(d)(e)(f)(g)(h)(i). AN ADDITIONAL SHEET MAY BE ADDED IF NECESSARY TO CONFIRM WITH SAID REQUIREMENTS.

(a) CORNER LOCATION:

EAST 1/4 CORNER OF SECTION 5
 TOWNSHIP 34 NORTH
 RANGE 5 EAST
 TOWN OF TOMAHAWK
 COUNTY OF LINCOLN

LINCOLN COUNTY COORDINATES:

N: 225018.92
 E: 343792.71



(b) HISTORY OF ORIGINAL CORNER:

ORIGINAL SURVEYOR: JACKSON L. PRENTICE
 DATE OF SURVEY: JULY 1855

ORIGINAL BEARING TREES: 10" SOFT MAPLE - S37°E, 41 LKS
 30" PINE - N66°W, 22 LKS

(f)(g)(h) DESCRIPTION OF MONUMENT FOUND AT THIS CORNER AND IF IT WAS ACCEPTED STATE ALL EVIDENCE (MATERIAL, TESTIMONIAL, OCCUPATIONAL, PLATS, RECORDS, OTHER MONUMENTS) USED AS A BASIS FOR ESTABLISHING LOCATION. IF REESTABLISHING THROUGH LOST CORNER PROPORTIONATE METHODS, INDICATE ALL MONUMENTS, DISTANCES, AND DIRECTIONS USED TO ESTABLISH. INDICATE TYPE OF MONUMENT AND SIGN POST FOUND OR SET.

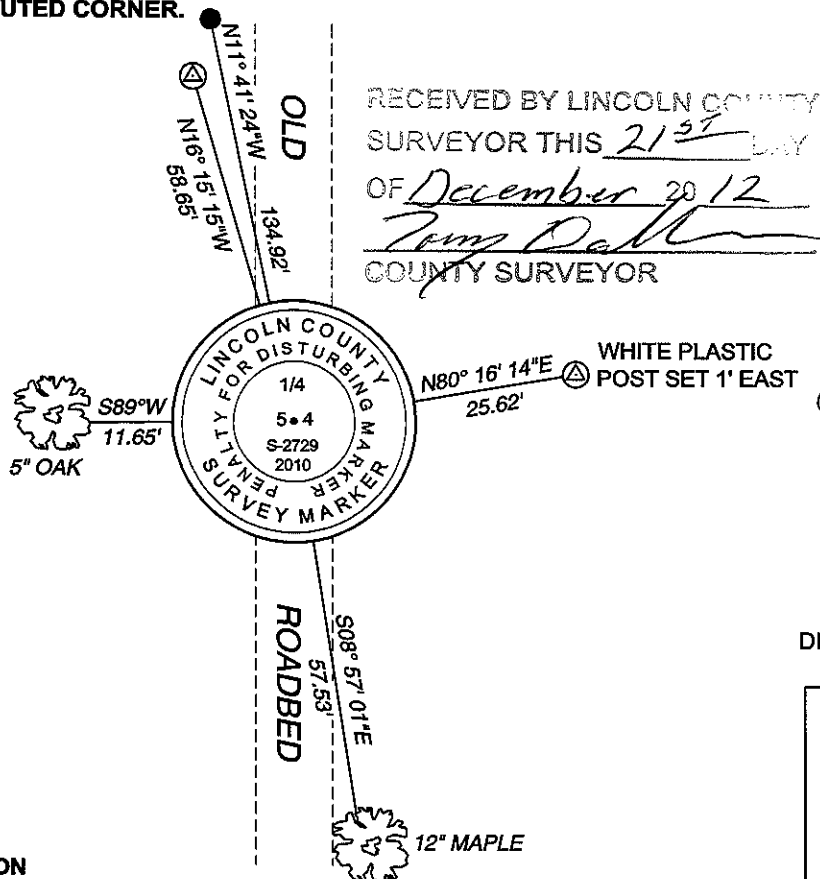
1855: JACKSON L. PRENTICE SET THE ORIGINAL 1/4 SECTION CORNER POST.

02/19/2003: WILLIAM W. NUTTER SHOWS A FOUND 1 1/2" IRON PIPE AT THIS CORNER.

12/16/2010: I FOUND A 1-1/2" X 36" IRON PIPE AND A STEEL FENCE POST WITH A BLUE LINE RUNNING EAST. I HELD THE IRON PIPE AND REPLACED IT WITH A LINCOLN COUNTY MONUMENT, MADE TWO BEARING TREES AND SET TWO 3/4" DIA. CAPPED REBAR REFERENCE MONUMENTS AS SHOW BELOW.

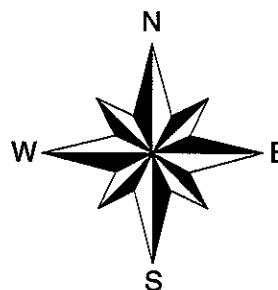
12/13/2012: AFTER FURTHER REVIEW I REALIZED THAT THE POSITION OF THE 1 1/2" IRON PIPE DOES NOT FIT WELL AT ALL WITH OLD FENCE LINES AND ROCK FENCES WITHIN THE INTERIOR OF SECTION 5, SO I REPOSITIONED THE CORNER. I ESTABLISHED THE NORTHING FOR THE CORNER POSITION BY SINGLE PROPORTION BETWEEN THE NE AND SE CORNERS OF SECTION 5 AND I USED THE CENTERLINE OF THE OLD ROADBED TO CONTROL THE EASTING. (OLD PLAT BOOKS GOING BACK TO THE EARLY 1900'S SHOW A ROAD ALONG THE SECTION LINE) THIS POSITION MATCHES THE INTERIOR FENCE LINES MUCH BETTER. I PULLED THE MONUMENT AND WITNESS MONUMENTS THAT I HAD SET IN PLACE OF THE PIPE AND SET THEM AT THE NEW CORNER POSITION AS SHOWN BELOW. I PUT THE 1 1/2" PIPE BACK AT THE POSITION I FOUND IT.

(c)(d)(e) PLAN VIEW OF CORNER WITH TIES TO AT LEAST FOUR WITNESSES. IF IN DISAGREEMENT WITH PREVIOUSLY ESTABLISHED CORNER, SHOW THE DISTANCES BETWEEN THE TWO CORNERS AND ALSO INDICATE THE TIE TO THE DISPUTED CORNER.



RECEIVED BY LINCOLN COUNTY SURVEYOR THIS 21ST DAY OF December 20 12
Gregory S. Maines
 COUNTY SURVEYOR

L.C. GRID BEARINGS



⊙ 3/4" X 30" IRON REBAR WITH LINCOLN CO. ALUM. CAP SET

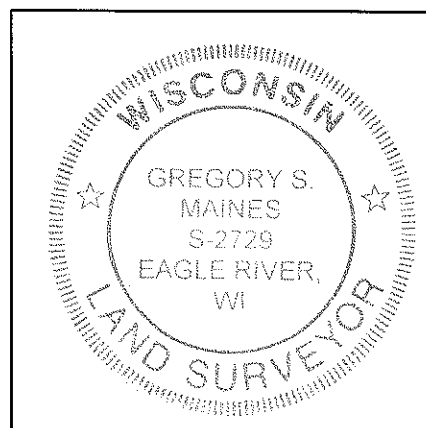
● 1 1/2" DIA. IRON PIPE FOUND

SKETCH IS NOT TO SCALE
 DISTANCES TO BT'S ARE TO NAIL IN SIDE

CERTIFICATION

I GREGORY S. MAINES, REGISTERED LAND SURVEYOR NO. 2729, HEREBY CERTIFY THAT THE CORNER LOCATION ON THIS RECORD WAS REFERENCED BY ME OR UNDER MY DIRECTION AND CONTROL AND THAT THIS U.S. PUBLIC LAND SURVEY MONUMENT RECORD IS COMPLETE TO THE BEST OF MY KNOWLEDGE AND BELIEF.

Gregory S. Maines
 SIGNATURE



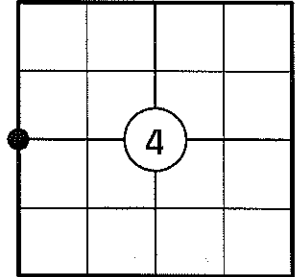
INDEX NO. C-9

U.S. PUBLIC LAND SURVEY MONUMENT RECORD

NOTE: THIS FORM IS INTENDED AND DESIGNED TO FULFILL ALL REQUIREMENTS OF WISCONSIN ADMINISTRATIVE CODE CHAPTER A-E 7.08 U.S. PUBLIC LAND SURVEY MONUMENT RECORD (3) (a)(b)(c)(d)(e)(f)(g)(h)(i). AN ADDITIONAL SHEET MAY BE ADDED IF NECESSARY TO CONFIRM WITH SAID REQUIREMENTS.

(a) CORNER LOCATION:

WEST 1/4 CORNER OF SECTION 4
 TOWNSHIP 34 NORTH
 RANGE 5 EAST
 TOWN OF TOMAHAWK
 COUNTY OF LINCOLN



(b) HISTORY OF ORIGINAL CORNER:

ORIGINAL SURVEYOR: JACKSON L. PRENTICE
 DATE OF SURVEY: JULY, 1855

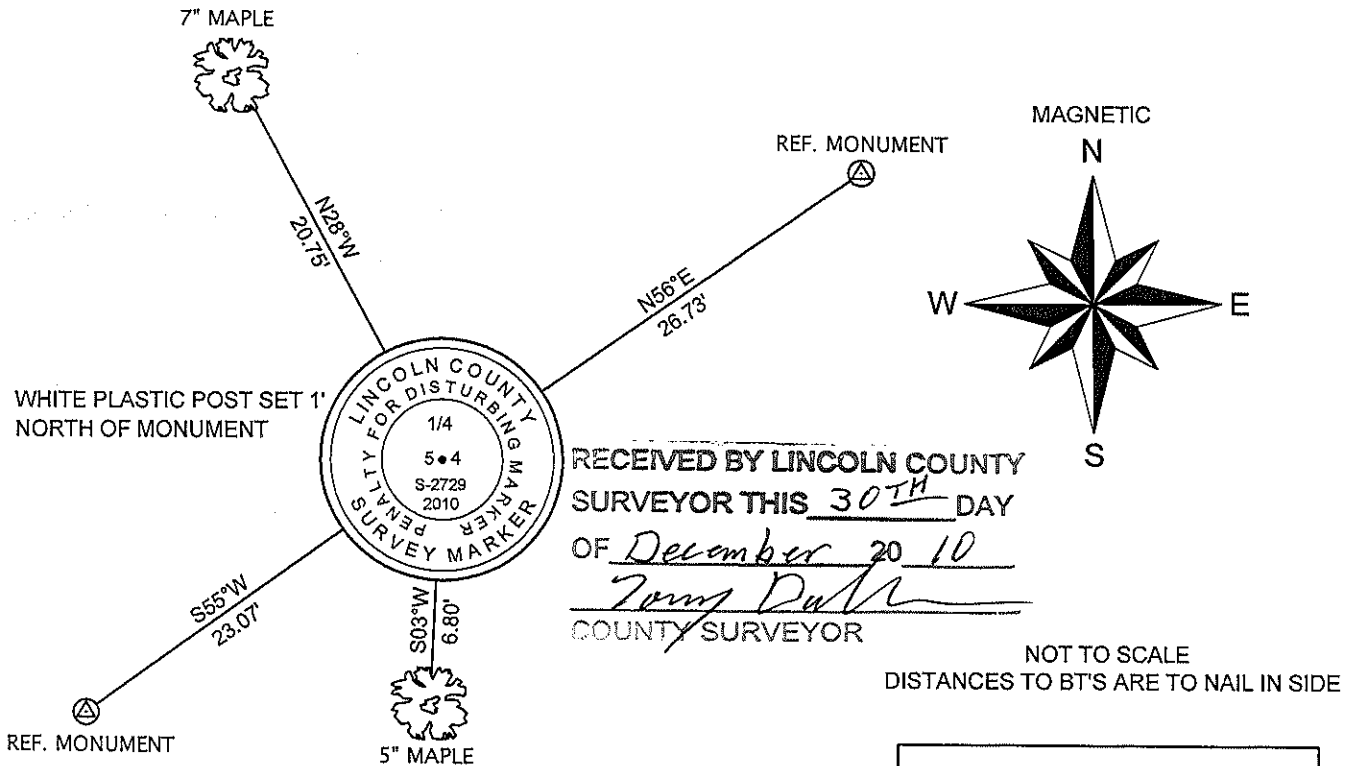
ORIGINAL BEARING TREES: 10" SOFT MAPLE - S37°E, 41 LKS
 30" - N66°W, 22 LKS

(f)(g)(h) DESCRIPTION OF MONUMENT FOUND AT THIS CORNER AND IF IT WAS ACCEPTED STATE ALL EVIDENCE (MATERIAL, TESTIMONIAL, OCCUPATIONAL, PLATS, RECORDS, OTHER MONUMENTS) USED AS A BASIS FOR ESTABLISHING LOCATION. IF REESTABLISHING THROUGH LOST CORNER PROPORTIONATE METHODS, INDICATE ALL MONUMENTS, DISTANCES, AND DIRECTIONS USED TO ESTABLISH. INDICATE TYPE OF MONUMENT AND SIGN POST FOUND OR SET.

1855: JACKSON L. PRENTICE SET THE ORIGINAL 1/4 SECTION POST.

12/16/2010: I FOUND A 1-1/2" X 36" IRON PIPE AND A STEEL FENCE POST WITH A BLUE LINE RUNNING EAST. I HELD THE IRON PIPE AND REPLACED IT WITH A LINCOLN COUNTY MONUMENT, MADE TWO BEARING TREES AND SET TWO 3/4" DIA. CAPPED REBAR REFERENCE MONUMENTS AS SHOW BELOW.

(c)(d)(e) PLAN VIEW OF CORNER WITH TIES TO AT LEAST FOUR WITNESSES. IF IN DISAGREEMENT WITH PREVIOUSLY ESTABLISHED CORNER, SHOW THE DISTANCES BETWEEN THE TWO CORNERS AND ALSO INDICATE THE TIE TO THE DISPUTED CORNER.

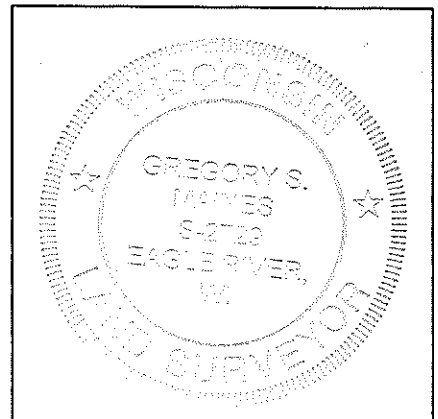


RECEIVED BY LINCOLN COUNTY
 SURVEYOR THIS 30TH DAY
 OF December 20 10
Tom Dull
 COUNTY SURVEYOR

NOT TO SCALE
 DISTANCES TO BT'S ARE TO NAIL IN SIDE

I GREGORY S. MAINES, REGISTERED LAND SURVEYOR NO. 2729, HEREBY CERTIFY THAT THE CORNER LOCATION ON THIS RECORD WAS REFERENCED BY ME OR UNDER MY DIRECTION AND CONTROL AND THAT THIS U.S. PUBLIC LAND SURVEY MONUMENT RECORD IS COMPLETE TO THE BEST OF MY KNOWLEDGE AND BELIEF.

Gregory S. Maines 12/29/10
 SIGNATURE



INDEX NO. C-9

WEST 1/4 CORNER OF SECTION 4, T34N, R05E

1 1/2" DIA. IRON PIPE FOUND



REPLACED PIPE WITH LINCOLN COUNTY BERNTSEN MONUMENT



FACING NORTH



FACING SOUTH



FACING EAST



FACING WEST

