

U.S. PUBLIC LAND SURVEY MONUMENT RECORD

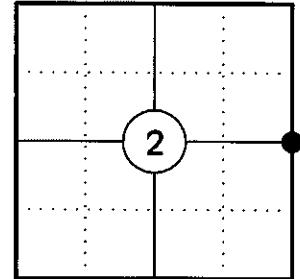
NOTE: THIS FORM IS INTENDED AND DESIGNED TO FULFILL ALL REQUIREMENTS OF WISCONSIN ADMINISTRATIVE CODE CHAPTER A-E 7.08 U.S. PUBLIC LAND SURVEY MONUMENT RECORD (3) (a)(b)(c)(d)(e)(f)(g)(h)(i). AN ADDITIONAL SHEET MAY BE ADDED IF NECESSARY TO CONFIRM WITH SAID REQUIREMENTS.

(a) CORNER LOCATION:

EAST 1/4 CORNER OF SECTION 2
 TOWNSHIP 34 NORTH
 RANGE 5 EAST
 TOWN OF TOMAHAWK
 COUNTY OF LINCOLN

LINCOLN COUNTY COORDINATES:

N: 225010.13
 E: 359748.59



(b) HISTORY OF ORIGINAL CORNER:

ORIGINAL SURVEYOR: JACKSON L. PRENTICE
 DATE OF SURVEY: JULY 1855

ORIGINAL BEARING TREES: 9" TAMARACK - S15°E, 14 LKS
 16" TAMARACK - N68°W, 16 LKS

(f)(g)(h) DESCRIPTION OF MONUMENT FOUND AT THIS CORNER AND IF IT WAS ACCEPTED STATE ALL EVIDENCE (MATERIAL, TESTIMONIAL, OCCUPATIONAL, PLATS, RECORDS, OTHER MONUMENTS) USED AS A BASIS FOR ESTABLISHING LOCATION. IF REESTABLISHING THROUGH LOST CORNER PROPORTIONATE METHODS, INDICATE ALL MONUMENTS, DISTANCES, AND DIRECTIONS USED TO ESTABLISH. INDICATE TYPE OF MONUMENT AND SIGN POST FOUND OR SET.

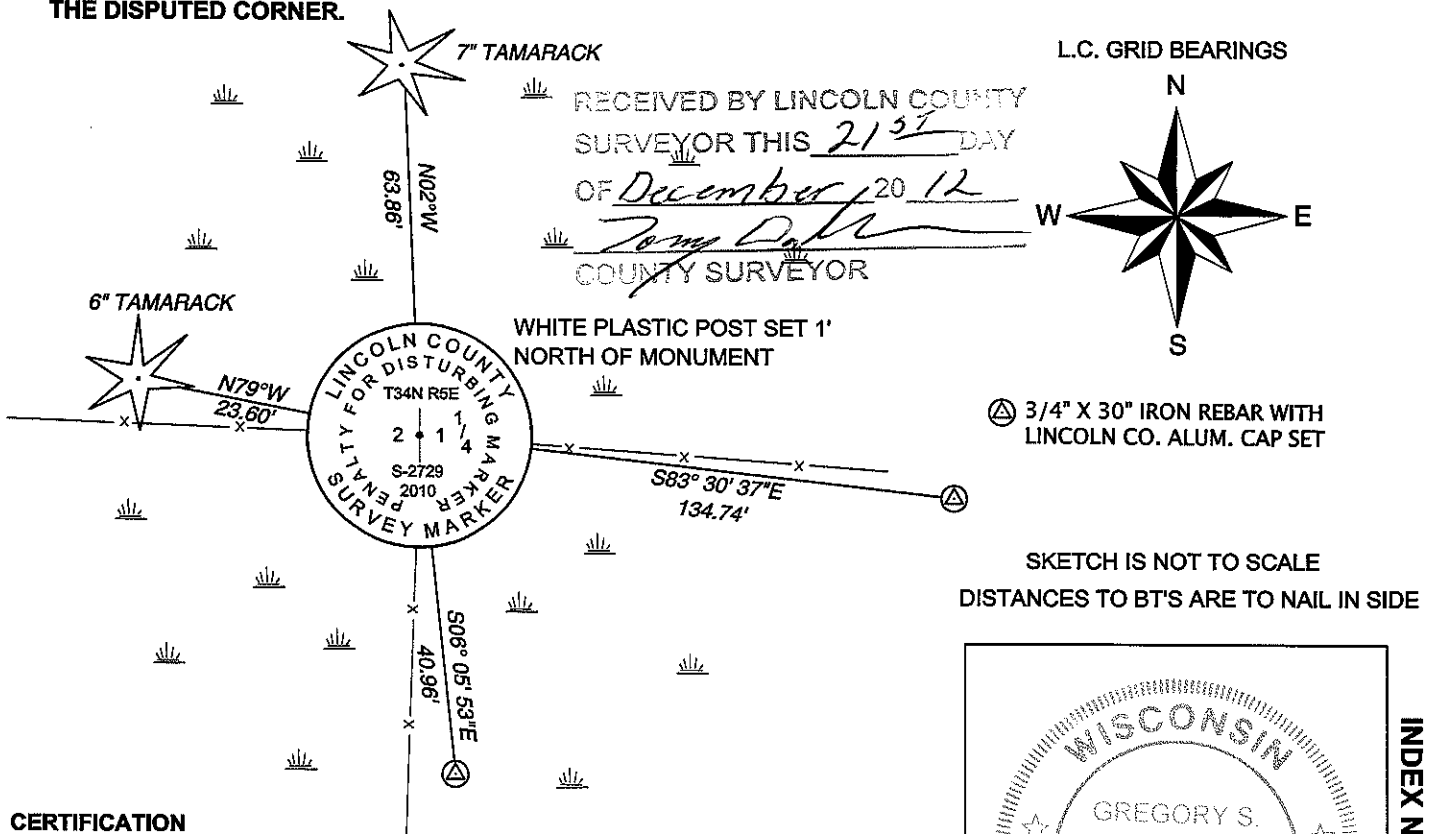
1855: JACKSON L. PRENTICE SET THE ORIGINAL 1/4 SECTION CORNER POST.

1960'S: NORTHWOODS SURVEYORS SEARCHED FOR EVIDENCE OF THE 1/4 CORNER AND FOUND NOTHING. HE SET AN IRON PIPE AT A FENCELINE INTERSECTION.

12/11/2010: I FOUND A 1" X 30" IRON PIPE IN A MARSH AT THE INTERSECTION OF A FENCELINE RUNNING SOUTH, EAST AND WEST AND IS ±80' SOUTH OF THE NORTH EDGE OF A MARSH. THE IRON PIPE BEARS N25°22'18"E, 144.16' FROM THE PROPORTIONED LOCATION AND DOES NOT MATCH THE CALL FOR ENTERING THE CRANBERRY MARSH 3.8 CHAINS NORTH. I SET A LINCOLN COUNTY ALUMINUM SWAMP MONUMENT AT THE PROPORTIONED LOCATION AS IT MATCHES THE ORIGINAL CALL FOR THE CRANBERRY MARSH, MADE TWO BEARING TREES AND SET TWO 3/4" DIA. CAPPED REBAR REFERENCE MONUMENTS AS SHOWN BELOW.

12/13/2012: AFTER FURTHER REVIEW I REALIZED THAT THE LOCATION OF THE IRON PIPE MATCHES THE LINES OF POSSESSION WITHIN THE INTERIOR OF SECTIONS 1 & 2 AND THAT HOLDING THE PRORATED POSITION WOULD CREATE SEVERAL ENCROACHMENTS. I REMOVED THE MONUMENT AND WITNESS MONUMENTS THAT I HAD SET AT THE PRORATED POSITION AND SET THEM IN PLACE OF THE IRON PIPE AS SHOWN BELOW.

(c)(d)(e) PLAN VIEW OF CORNER WITH TIES TO AT LEAST FOUR WITNESSES. IF IN DISAGREEMENT WITH PREVIOUSLY ESTABLISHED CORNER, SHOW THE DISTANCES BETWEEN THE TWO CORNERS AND ALSO INDICATE THE TIE TO THE DISPUTED CORNER.

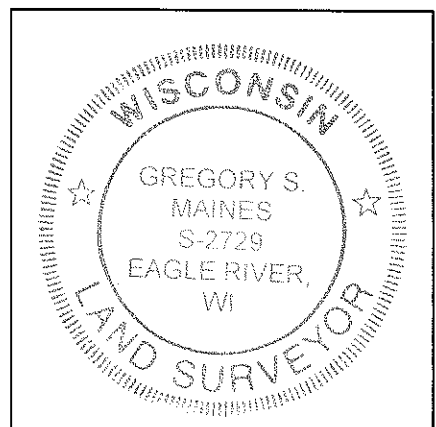


SKETCH IS NOT TO SCALE
 DISTANCES TO BT'S ARE TO NAIL IN SIDE

CERTIFICATION

I GREGORY S. MAINES, REGISTERED LAND SURVEYOR NO. 2729, HEREBY CERTIFY THAT THE CORNER LOCATION ON THIS RECORD WAS REFERENCED BY ME OR UNDER MY DIRECTION AND CONTROL AND THAT THIS U.S. PUBLIC LAND SURVEY MONUMENT RECORD IS COMPLETE TO THE BEST OF MY KNOWLEDGE AND BELIEF.

SIGNATURE



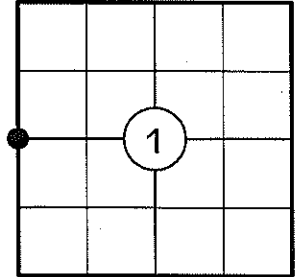
INDEX NO. C-21

U.S. PUBLIC LAND SURVEY MONUMENT RECORD

NOTE: THIS FORM IS INTENDED AND DESIGNED TO FULFILL ALL REQUIREMENTS OF WISCONSIN ADMINISTRATIVE CODE CHAPTER A-E 7.08 U.S. PUBLIC LAND SURVEY MONUMENT RECORD (3) (a)(b)(c)(d)(e)(f)(g)(h)(i). AN ADDITIONAL SHEET MAY BE ADDED IF NECESSARY TO CONFIRM WITH SAID REQUIREMENTS.

(a) CORNER LOCATION:

WEST 1/4 CORNER OF SECTION 1
 TOWNSHIP 34 NORTH
 RANGE 5 EAST
 TOWN OF TOMAHAWK
 COUNTY OF LINCOLN



(b) HISTORY OF ORIGINAL CORNER:

ORIGINAL SURVEYOR: JACKSON L. PRENTICE
 DATE OF SURVEY: JULY, 1855

ORIGINAL BEARING TREES: 9" TAMARACK - S15°E, 14 LKS
 16" TAMARACK - N68°W, 16 LKS

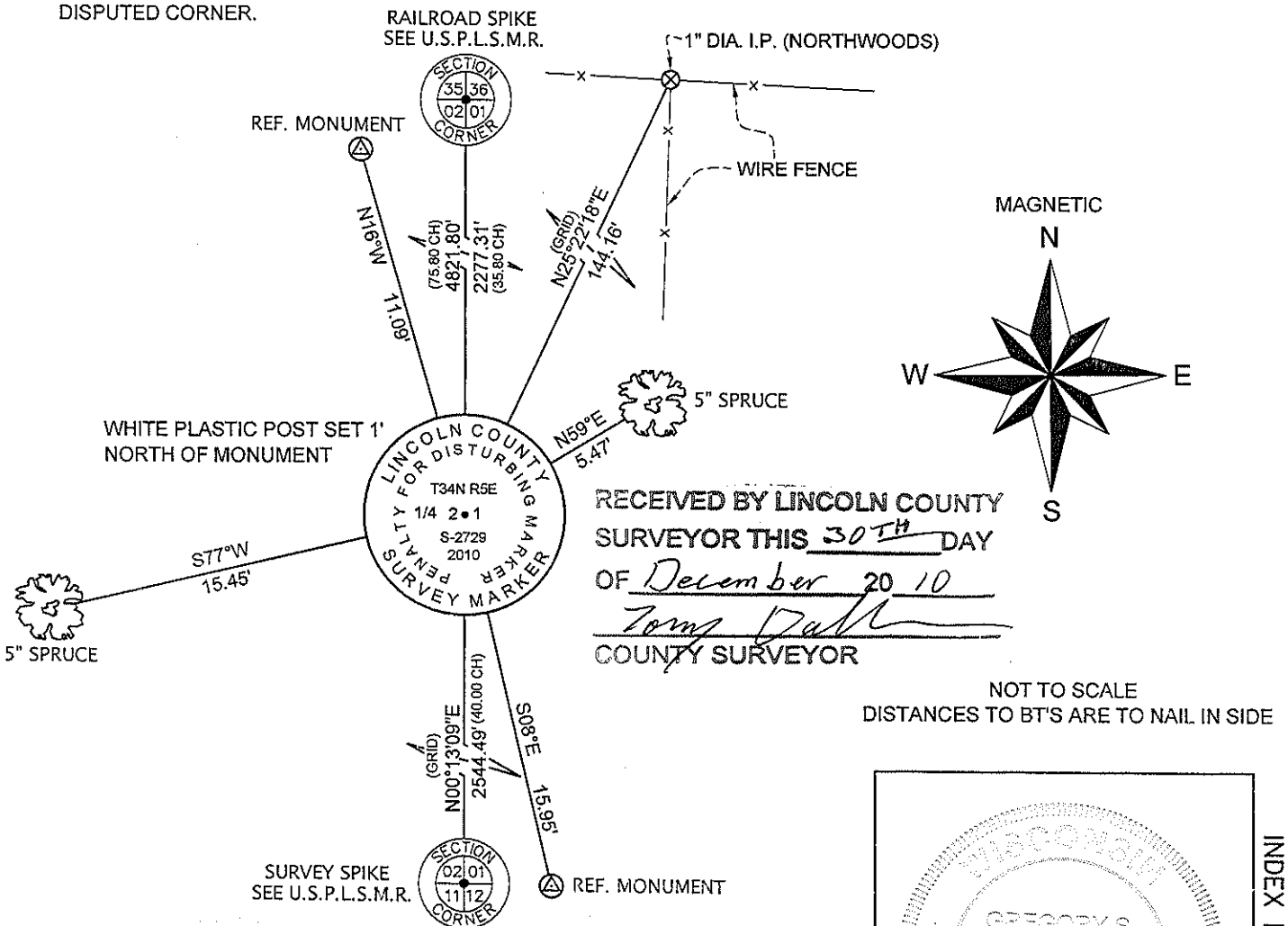
(f)(g)(h) DESCRIPTION OF MONUMENT FOUND AT THIS CORNER AND IF IT WAS ACCEPTED STATE ALL EVIDENCE (MATERIAL, TESTIMONIAL, OCCUPATIONAL, PLATS, RECORDS, OTHER MONUMENTS) USED AS A BASIS FOR ESTABLISHING LOCATION. IF REESTABLISHING THROUGH LOST CORNER PROPORTIONATE METHODS, INDICATE ALL MONUMENTS, DISTANCES, AND DIRECTIONS USED TO ESTABLISH. INDICATE TYPE OF MONUMENT AND SIGN POST FOUND OR SET.

1855: JACKSON L. PRENTICE SET THE ORIGINAL 1/4 SECTION POST.

1960'S: NORTHWOODS SURVEYORS SEARCHED FOR EVIDENCE OF THE 1/4 CORNER AND FOUND NOTHING. HE SET AN IRON PIPE AT A FENCELINE INTERSECTION.

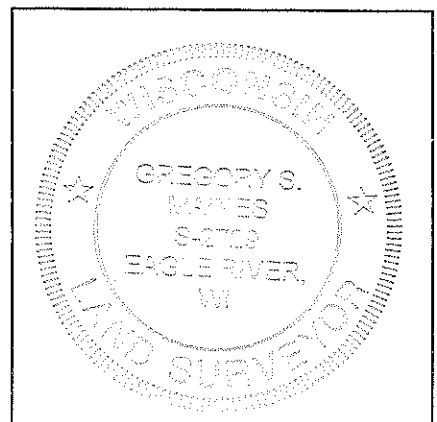
12/11/2010: I FOUND A 1" X 30" IRON PIPE IN A MARSH AT THE INTERSECTION OF A FENCELINE RUNNING SOUTH, EAST AND WEST AND IS ±80' SOUTH OF THE NORTH EDGE OF A MARSH. THE IRON PIPE BEARS N25°22'18"E, 144.16' FROM THE PROPORTIONED LOCATION AND DOES NOT MATCH THE CALL FOR ENTERING THE CRANBERRY MARSH 3.8 CHAINS NORTH. I SET A LINCOLN COUNTY ALUMINUM SWAMP MONUMENT AT THE PROPORTIONED LOCATION AS IT MATCHES THE ORIGINAL CALL FOR THE CRANBERRY MARSH, MADE TWO BEARING TREES AND SET TWO 3/4" DIA. CAPPED REBAR REFERENCE MONUMENTS AS SHOWN BELOW.

(c)(d)(e) PLAN VIEW OF CORNER WITH TIES TO AT LEAST FOUR WITNESSES. IF IN DISAGREEMENT WITH PREVIOUSLY ESTABLISHED CORNER, SHOW THE DISTANCES BETWEEN THE TWO CORNERS AND ALSO INDICATE THE TIE TO THE DISPUTED CORNER.



RECEIVED BY LINCOLN COUNTY
 SURVEYOR THIS 30TH DAY
 OF December 20 10
Tom Dalk
 COUNTY SURVEYOR

NOT TO SCALE
 DISTANCES TO BT'S ARE TO NAIL IN SIDE



INDEX NO. C-21

I GREGORY S. MAINES, REGISTERED LAND SURVEYOR NO. 2729, HEREBY CERTIFY THAT THE CORNER LOCATION ON THIS RECORD WAS REFERENCED BY ME OR UNDER MY DIRECTION AND CONTROL AND THAT THIS U.S. PUBLIC LAND SURVEY MONUMENT RECORD IS COMPLETE TO THE BEST OF MY KNOWLEDGE AND BELIEF.

Gregory S. Maines 12/29/10
 SIGNATURE

**EAST 1/4 CORNER OF SECTION 2, T 34N, R05E
LINCOLN COUNTY SWAMP MONUMENT SET**



FACING NORTH



FACING SOUTH



FACING EAST



FACING WEST

