

LINCOLN COUNTY U.S. PUBLIC LAND SURVEY MONUMENT LOCATION RECORD

SECTION 7
TOWNSHIP 34 N
RANGE 6 E

E-1
NO.

LANDMARK BENCHMARK _____
CORNER IDENTITY: BERNTSEN SNM1 STEEL NAIL MARKER
FOUND
SET
RESET
RE-TIED

LINCOLN COUNTY COORDINATE: N: 222063.967
E: 365005.274

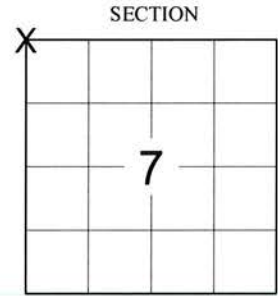
ELEVATION-(FEET): _____ DATUM: 83 (2011)

WEATHER: PARTLY CLOUDY

DATE OF SURVEY: 07/02/2019 TEMPERATURE: 75 °F

SURVEY PARTY: KEITH WALKOWSKI AND AUSTIN PELOT

BRADLEY
CITY, VILLAGE, TOWN



LOCATION
(Indicated By X)



BASIS FOR MONUMENT LOCATION:
(DESCRIBE METHOD OF SURVEY AND CORNER AUTHENTICATION)

SEARCHED FOR THE NORTHWEST CORNER OF SECTION 7 AND FOUND THE SHAFT OF A SMP NAIL ALONG WITH 3 OUT OF 4 TIES FROM THE 1994 TIESHEET BY CHARLES R. WINKLER. ACCEPTED THE FOUND SHAFT AS THE CORNER AND ADDED AN ADDITIONAL TIE AND RESET A BERNTSEN SNM-1 STEEL NAIL MARKER AT THE CORNER UPON COMPLETION OF THE STH "86" RESURFACING PROJECT TO PERPETUATE THE CORNER LOCATION AS SHOWN BELOW.



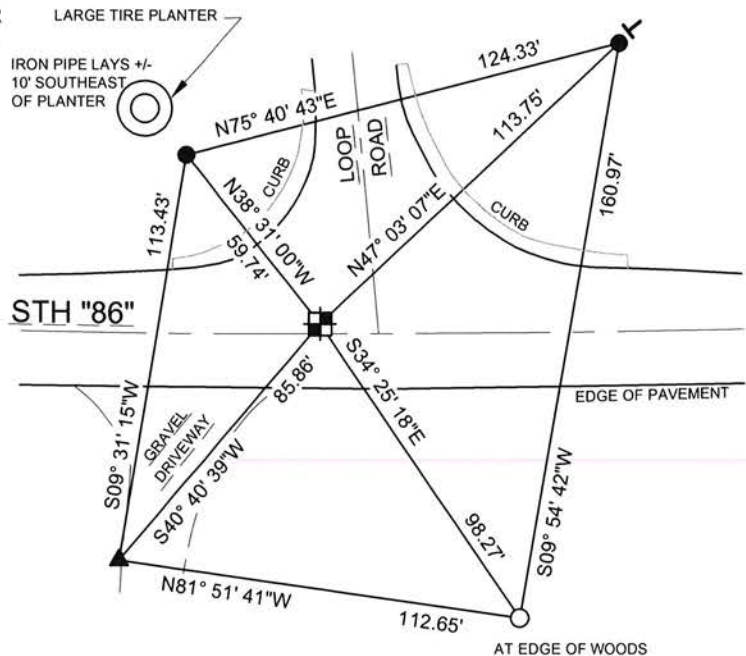
FIELD BOOK NO. NA PAGE NO. NA

COMPANY RIVERSIDE LAND SURVEYING LLC

CERTIFIED CORRECT:
Keith J. Walkowski
KEITH J. WALKOWSKI S-2717
Professional Land Surveyor
DATE: OCTOBER 15TH, 2019

TIE SKETCH:

- SET BERNTSEN SNM1 STEEL NAIL MARKER
- FOUND ALUMINUM BERNTSEN MONUMENT
- - FOUND 1" O.D. IRON PIPE
- ▲ - SET BERNTSEN SSSD-130
- T - SET VINYL "T" POST



RECEIVED BY LINCOLN COUNTY
SURVEYOR THIS 12TH DAY
OF November 20, 19
Jerry Dalko
COUNTY SURVEYOR

NOTE: CORNER LIES 2.7' NORTH OF CENTERLINE OF STH 86 AND 16' WEST OF CENTERLINE OF LOOP ROAD.

BEARINGS ARE BASED ON THE LINCOLN COUNTY COORDINATE SYSTEM NAD 83 (2011) AND REFERENCED AS SHOWN

THIS DRAWING IS NOT TO SCALE

E-1
NO.

U.S. PUBLIC LAND SURVEY MONUMENT RECORD

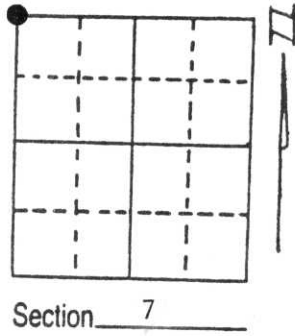
Note: This form is intended and designed to fulfill all requirements of Wisconsin Administrative Code, Chapter A-E 5.02, U.S. Public Land Survey Monument Record (3) (a) (b) (c) (d) (e) (f) (g) (h) (i). An additional sheet may be added if necessary to conform with said requirements.

(a) Corner location: Township 34 North

Range 6 East

Town/City/Village Bradley

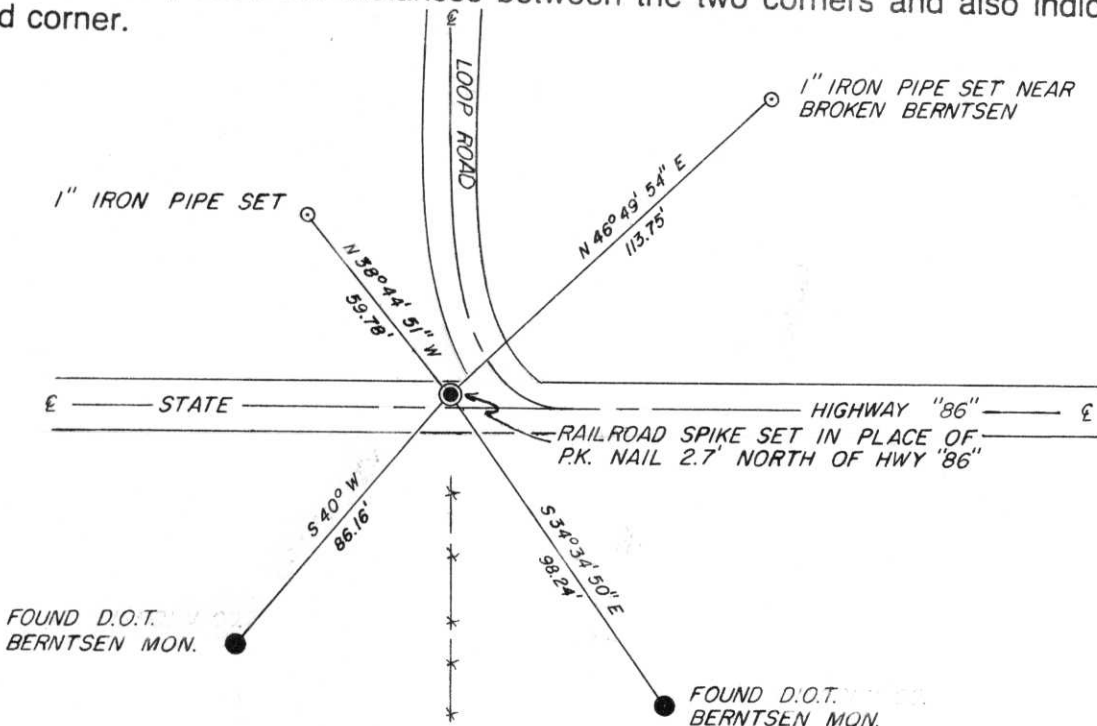
County Lincoln



(b) (f) (g) (h) Description of monument found at this corner and if it was accepted, state all evidence (material, testimonial, occupational, plats, records, other monuments) used as a basis for accepting. If not accepted or if nothing was found, state evidence used as basis for establishing location. If reestablished through lost corner proportionate methods, indicate all monuments, distances and directions used to establish.

- August, 1851 - James Marsh, Deputy Surveyor, set post for corner to Sections 1, 6, 7 and 12. Bearing Trees: 12" Tamarack, S33°E, 29 lks; 12" Aspen, S36°W, 17 lks; 8" Birch, N54°W, 10 lks; 12" Black Pine, N37°E, 28 lks.
- 1966 - James Griffin, Registered Land Surveyor, field notes show that a railroad spike was set for corner position at extension of fence from south and at intersection of centerlines of Loop Road and St. Hwy. "86". Bearing tree 16" Oak, S40°E, 44.8 feet.
- 1988 - James D. Rein, Registered Land Surveyor No. 1234, found base of railroad spike, top broken off, at intersection of St. Hwy. "86" and Loop Road, existing bearing tree: 23" Oak, S40°E, 45.5 feet. Corner position is in harmony with an extension of an old line from south.
- 1994 - I found and accepted a P.K. nail along with two Berntsen Monuments as witnesses that checked with witnesses established in 1988 by James D. Rein. I replaced said P.K. nail with railroad spike.

(c) (d) (e) Plan view of corner with ties to at least 4 witness monuments. If in disagreement with previously established corner, show the distances between the two corners and also indicate the ties to the disputed corner.



RECEIVED AT LINCOLN COUNTY
 COURTHOUSE THIS 21st DAY
 OF June 1995
Pat Miller
 TAX DESCRIPTION OFFICE

(i) I, Charles E. Winkler S-1431
 (type or print name) certify that the corner location on this record was determined by me or under my direction and control and that this U.S. Public Land Survey Monument Record is correct and complete to the best of my knowledge and belief.

Charles E. Winkler 11/17/1994
 Signature Foltz & Associates, Inc. Date



Index No. E-1

U.S. PUBLIC LAND SURVEY MONUMENT RECORD

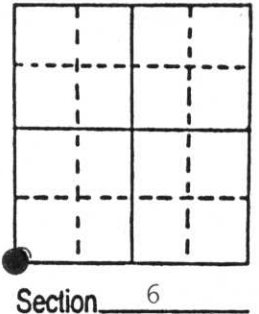
Note: This form is intended and designed to fulfill all requirements of Wisconsin Administrative Code, Chapter A-E 7.08 U.S. Public Land Survey Monument Record (3) (a) (b) (c) (d) (e) (f) (g) (h) (i). An additional sheet may be added if necessary to conform with said requirements.

(a) Corner location: Township 34 North

Range 6 East/West

Town/City/Village Bradley

County Lincoln



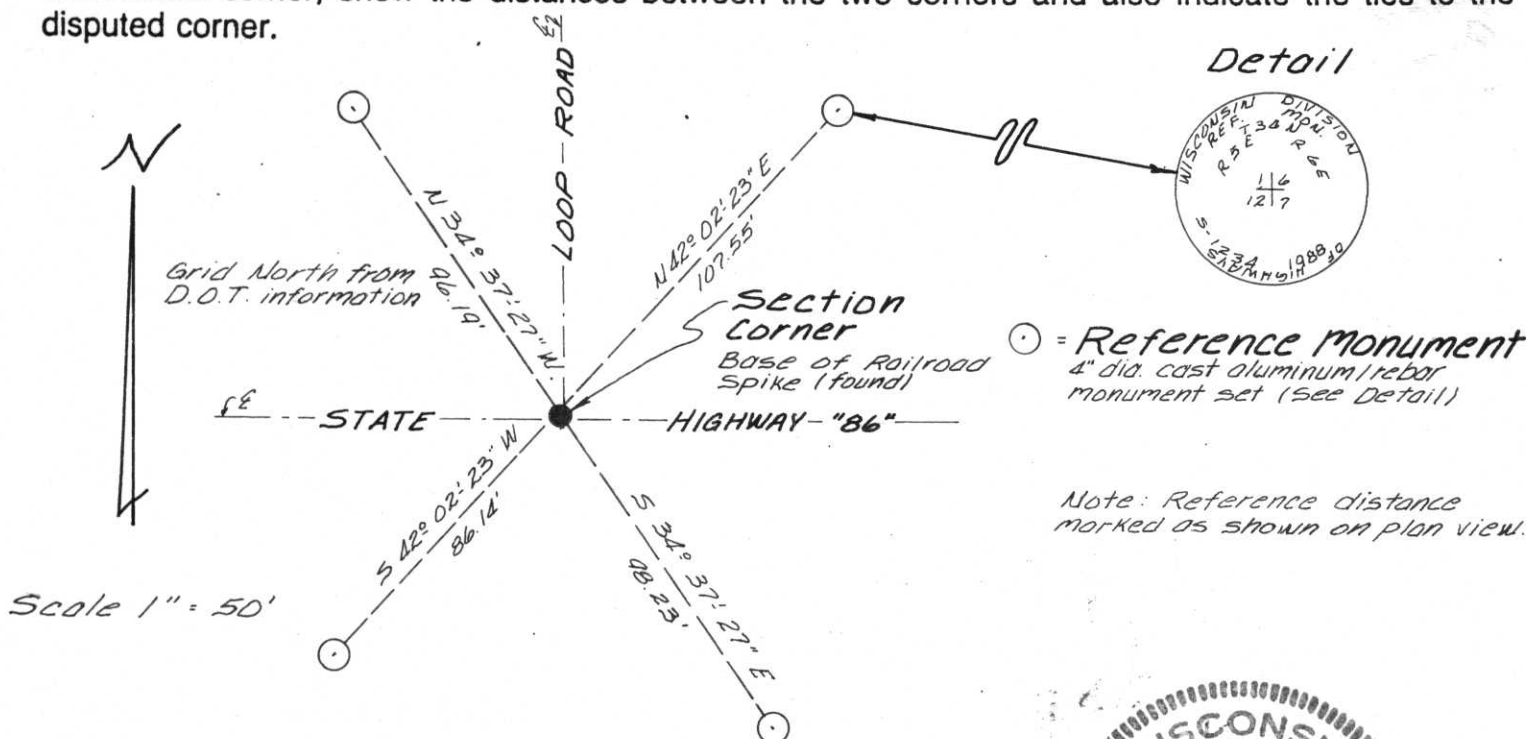
(b) (f) (g) (h) Description of monument found at this corner and if it was accepted, state all evidence (material, testimonial, occupational, plats, records, other monuments) used as a basis for accepting. If not accepted or if nothing was found, state evidence used as basis for establishing location. If reestablished through lost corner proportionate methods, indicate all monuments, distances and directions used to establish.

Aug 1851 - James Marsh, Deputy Surveyor, set post for corner to Section 1, 6, 7; and 12. Bearing trees: 12" Tamarack S33°E, 29 links; 12" Aspen S36°W, 17 links; 8" Birch N54°W, 10 links; 12" Black Pine N37°E, 28 links.

January 10, 1966 - James Griffen, Registered Land Surveyor, field notes show that a railroad spike was set for corner position at extension of fence from the south and at intersection of center lines of Loop Road and State Hwy "86". Bearing tree; 16" Oak S40°E, 44.8 feet.

Nov 10, 1988 - James D. Rein, RLS No.1234, found base of railroad spike, top broke off, at intersection of State Highway "86" and Loop Road. Existing Bearing tree; 23" Oak S40°E, 45.5 feet. Corner position is in harmony with an extension of old fence line from the south.

(c) (d) (e) Plan view of corner with ties to at least 4 witness monuments. If in disagreement with previously established corner, show the distances between the two corners and also indicate the ties to the disputed corner.



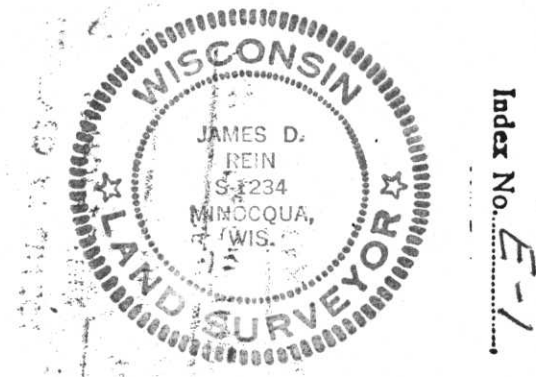
Detail

○ = Reference monument
4" dia. cast aluminum/rebar monument set (See Detail)

Note: Reference distance marked as shown on plan view.

(i) I, James D. Rein RLS No. 1234
(type or print name) certify that the corner location on this record was determined by me or under my direction and control and that this U.S. Public Land Survey Monument Record is correct and complete to the best of my knowledge and belief.

James D. Rein Signature December 9th, 1988 Date



Index No. E-1