

U.S. PUBLIC LAND SURVEY MONUMENT RECORD

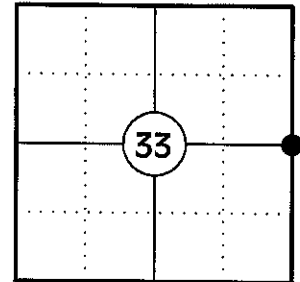
NOTE: THIS FORM IS INTENDED AND DESIGNED TO FULFILL ALL REQUIREMENTS OF WISCONSIN ADMINISTRATIVE CODE CHAPTER A-E 7.08 U.S. PUBLIC LAND SURVEY MONUMENT RECORD (3) (a)(b)(c)(d)(e)(f)(g)(h)(i). AN ADDITIONAL SHEET MAY BE ADDED IF NECESSARY TO CONFIRM WITH SAID REQUIREMENTS.

(a) CORNER LOCATION:

EAST 1/4 CORNER OF SECTION 33
 TOWNSHIP 34 NORTH
 RANGE 4 EAST
 TOWN OF TOMAHAWK
 COUNTY OF LINCOLN

LINCOLN COUNTY COORDINATES:

N: 198501.46
 E: 317529.88



(b) HISTORY OF ORIGINAL CORNER:

ORIGINAL SURVEYOR: EDWARD D. PALMER
 DATE OF SURVEY: APRIL 1865

ORIGINAL BEARING TREES: 14" SUGAR - N51°W, 10 LKS
 10" LIND - N42°E, 23 LKS

(f)(g)(h) DESCRIPTION OF MONUMENT FOUND AT THIS CORNER AND IF IT WAS ACCEPTED STATE ALL EVIDENCE (MATERIAL, TESTIMONIAL, OCCUPATIONAL, PLATS, RECORDS, OTHER MONUMENTS) USED AS A BASIS FOR ESTABLISHING LOCATION. IF REESTABLISHING THROUGH LOST CORNER PROPORTIONATE METHODS, INDICATE ALL MONUMENTS, DISTANCES, AND DIRECTIONS USED TO ESTABLISH. INDICATE TYPE OF MONUMENT AND SIGN POST FOUND OR SET.

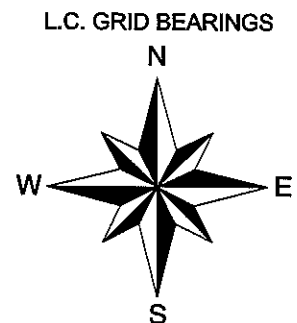
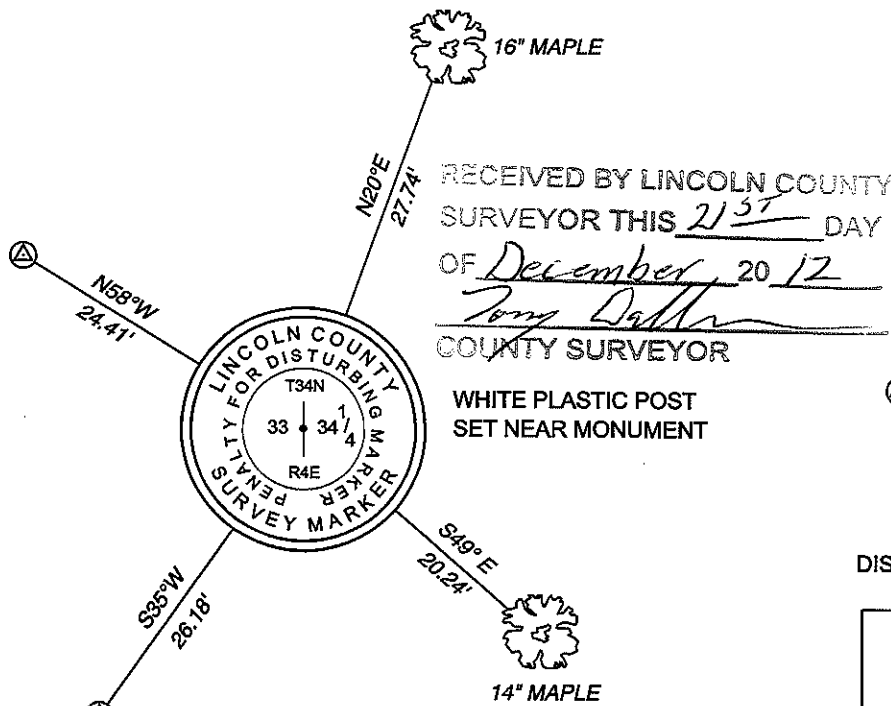
1865: EDWARD D. PALMER SET THE ORIGINAL 1/4 CORNER POST.

1964: OWENS - ILLINOIS SHOWS AN IRON PIPE OR CAP AT THE CORNER LOCATION AND USED IT AS PART OF THERE SURVEYS OF SECTIONS 33 AND SECTION 34 PER MAPS PREPARED BY W.H. STUTH ON 03/06/1987 ON FILE IN THE COUNTY SURVEYOR'S OFFICE. THE MAPS BOTH NOTE THAT THE CORNERS ALONG THE EAST LINE OF SECTION 33 WERE SET WRONG AND THE EAST LINE WILL HAVE TO BE RESURVEYED TO SET THE 1/4 CORNER AND 1/16 CORNERS CORRECTLEY.

02/26/1997: LESTER SCHMIT SHOWS A COMPUTED POSITION FOR THE CORNER. (L.C. MAP L216A)

11/26/2012: I FOUND NO EVIDENCE OF THE ORIGINAL CORNER. I POSITIONED THE CORNER BY SINGLE PROPORTION USING THE NE CORNER OF SECTION 33 AND THE SE CORNER OF SECTION 33 AND SET A LINCOLN COUNTY BERNTSEN BREAKAWAY MONUMENT. I MADE TWO BEARING TREES AND SET TWO REFERENCE MONUMENTS TO WITNESS THE CORNER. I FOUND A BLAZED LINE RUNNING NORTH AND SOUTH APPROXIMATELY 18 FEET EAST OF THE BERNTSEN MONUMENT.

(c)(d)(e) PLAN VIEW OF CORNER WITH TIES TO AT LEAST FOUR WITNESSES. IF IN DISAGREEMENT WITH PREVIOUSLY ESTABLISHED CORNER, SHOW THE DISTANCES BETWEEN THE TWO CORNERS AND ALSO INDICATE THE TIE TO THE DISPUTED CORNER.



⊙ 3/4" X 30" IRON REBAR WITH LINCOLN CO. ALUM. CAP SET

SKETCH IS NOT TO SCALE
 DISTANCES TO BT'S ARE TO NAIL IN SIDE

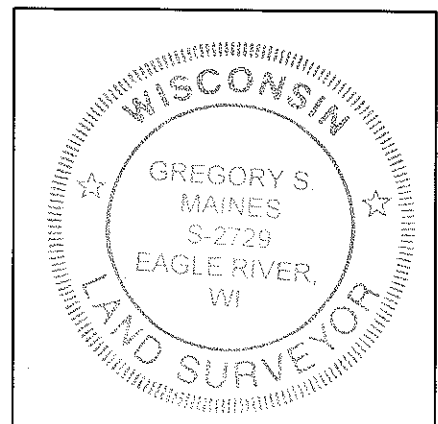
RECEIVED BY LINCOLN COUNTY SURVEYOR THIS 21ST DAY OF December, 20 12
Tony Decker
 COUNTY SURVEYOR

WHITE PLASTIC POST SET NEAR MONUMENT

CERTIFICATION

I GREGORY S. MAINES, REGISTERED LAND SURVEYOR NO. 2729, HEREBY CERTIFY THAT THE CORNER LOCATION ON THIS RECORD WAS REFERENCED BY ME OR UNDER MY DIRECTION AND CONTROL AND THAT THIS U.S. PUBLIC LAND SURVEY MONUMENT RECORD IS COMPLETE TO THE BEST OF MY KNOWLEDGE AND BELIEF.

Gregory S. Maines
 SIGNATURE



INDEX NO. W-13