

LINCOLN COUNTY U.S. PUBLIC LAND TIE SHEET RECORD

SECTION 4
TOWNSHIP 33N
RANGE 4 E

43343
NO.

LANDMARK

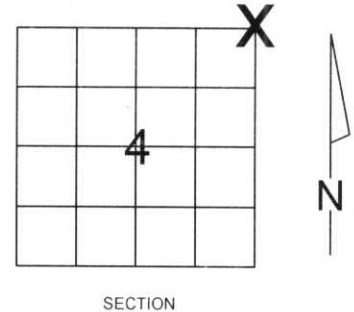
CORNER INDENTITY: BERNSTEN MONUMENT

LINCOLN COUNTY COORDINATE: N: 195896.208
E: 317646.989

DATE OF SURVEY: December 20, 2007
SURVEY PARTY: Eron/Rutzen

CORNING
CITY, VILLAGE, TOWN

FOUND
SET
RE-SET
RE-TIED



Description of monument found at this corner and if was accepted, state all evidence (material, testimonial, occupational, plats, records, other monuments) used as a basis for accepting. If not accepted or if nothing was found, state evidence used as basis for establishing location. If reestablished through lost corner proportionate methods, indicate all monuments, distances and directions used to establish.

BASIS FOR MONUMENT LOCATION:

(DESCRIBE METHOD OF SURVEY AND CORNER AUTHENTICATION)
Found Lincoln County Bernsten Monument, 1" Iron Pipe, and a Wood Post at corner. Blue line, Property evidence, plat of survey by Lester J. Shmitt on February 26, 1997 and comparison to the original notes supports the Bernsten Monument as corner.

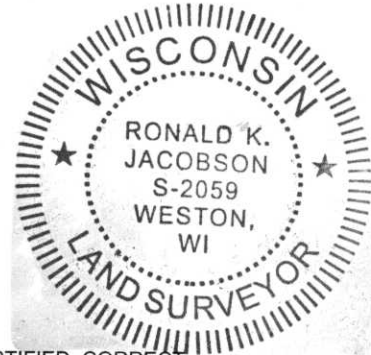


CWE, Inc.

5707 SCHOFIELD AVE.
WESTON, WISCONSIN
54476

PHONE: (715) 359-9400
FAX: (715) 355-4199

general@cwengineers.com
www.cwengineers.com



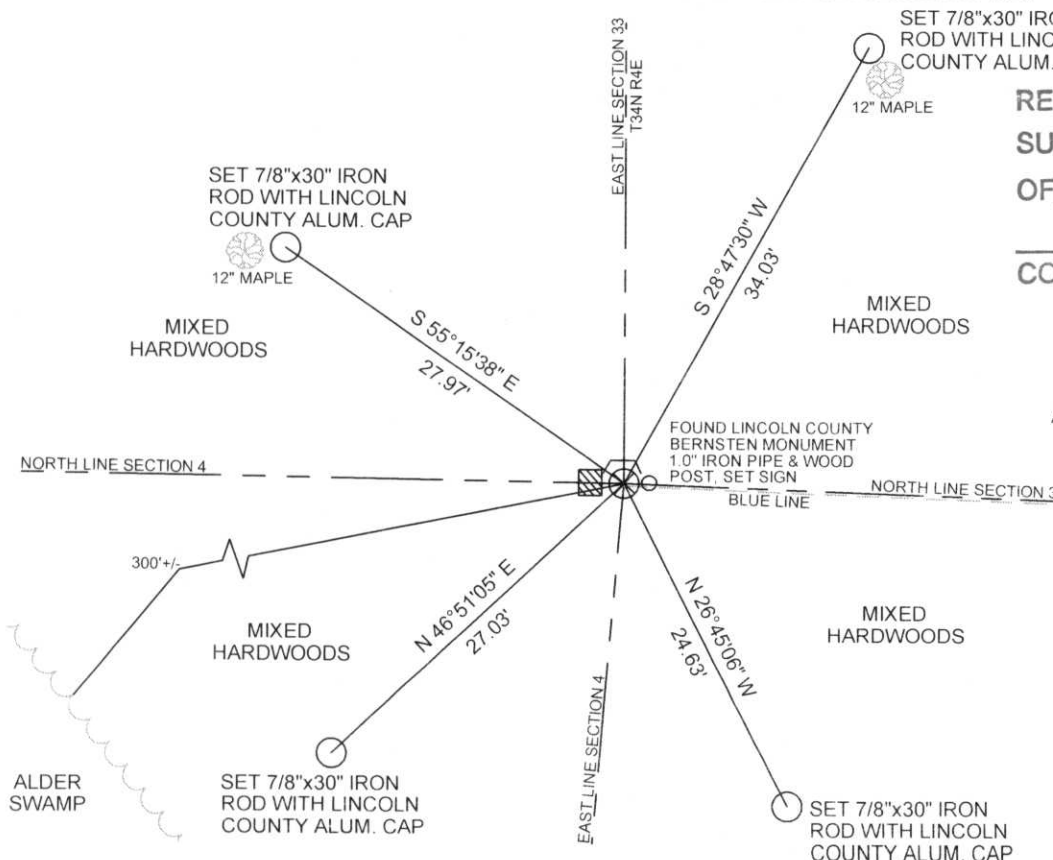
CERTIFIED CORRECT:

Ronald Jacobson
Ronald Jacobson RLS 2059-008
Registered Land Surveyor

DATE: January 25, 2008

TIE SKETCH:

SHOW MINIMUM OF FOUR (4) HORIZONTAL TIE DISTANCES TO FIXED WITNESS MONUMENTS.
DESCRIBE ALL MONUMENTS FOUND OR SET. ALL DISTANCES SHOWN IN US SURVEY FEET.



RECEIVED BY LINCOLN COUNTY
SURVEYOR THIS 24TH DAY
OF January 20 08
Tony Dahl
COUNTY SURVEYOR

COORDINATES ARE REFERENCED
TO LINCOLN COUNTY COORDINATE
SYSTEM AS DEVELOPED BY THE WI.
DEPARTMENT OF TRANSPORTATION
AND ARE BASED ON GPS OBSERVATIONS
TO CONTROL POINTS AS SUPPLIED BY
LINCOLN COUNTY.

NOT TO SCALE
BEARINGS REFERENCED
TO LINCOLN COUNTY
COORDINATE SYSTEM

A-13

Picture 3 – Looking South From Corner



Picture 4 – Looking West From Corner



Picture 5 –Found Berntsen, 1 Inch Iron Pipe and Wood Post



Picture 6 –Found Berntsen, 1 Inch Iron Pipe and Wood Post

