

LINCOLN COUNTY U.S. PUBLIC LAND
TIE SHEET RECORD



CORNER INDENTITY: 1.5" IRON PIPE & WOOD POST

LINCOLN COUNTY COORDINATE: N: 195970.932

E: 312391.417

DATE OF SURVEY: December 18, 2007

SURVEY PARTY: Eron

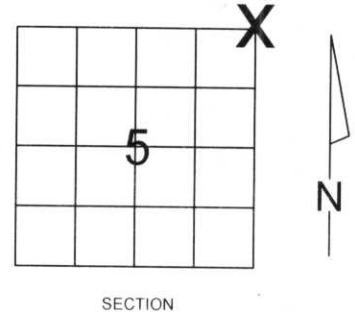
SECTION 5
TOWNSHIP 33N
RANGE 4 E

CORNING
CITY, VILLAGE, TOWN

53343

NO.

FOUND ☒
SET ☐
RE-SET ☐
RE-TIED ☐



Description of monument found at this corner and if was accepted, state all evidence (material, testimonial, occupational, plats, records, other monuments) used as a basis for accepting. If not accepted or if nothing was found, state evidence used as basis for establishing location. If reestablished through lost corner proportionate methods, indicate all monuments, distances and directions used to establish.

BASIS FOR MONUMENT LOCATION:

(DESCRIBE METHOD OF SURVEY AND CORNER AUTHENTICATION)

Found 1.5" Iron Pipe and Wood Post at corner. Also found Lincoln County Bernsten Monument to the Northwest as indicated on Plat of Survey, dated February 26, 1997, by Lester J. Shmitt. Conversation with Lester Shmitt on 1-17-08, blue lines, property evidence, and comparison to the original notes supports the 1.5" Iron Pipe and Wood Post as corner.

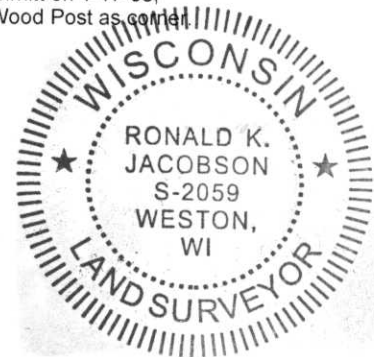


CWE, Inc.

5707 SCHOFIELD AVE.
WESTON, WISCONSIN
54476

PHONE: (715) 359-9400
FAX: (715) 355-4199

general@cwengineers.com
www.cwengineers.com



CERTIFIED CORRECT:

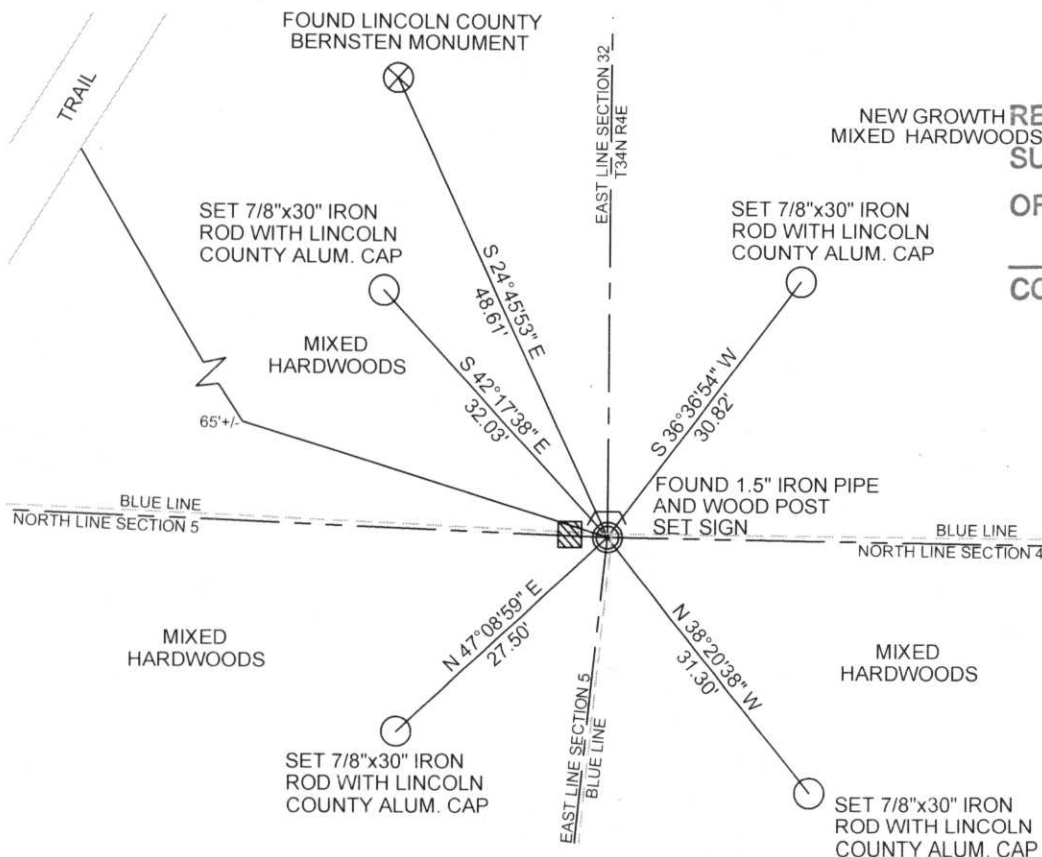
Ronald Jacobson RLS 2059-008

Registered Land Surveyor

DATE: January 25, 2008

TIE SKETCH:

SHOW MINIMUM OF FOUR (4) HORIZONTAL TIE DISTANCES TO FIXED WITNESS MONUMENTS.
DESCRIBE ALL MONUMENTS FOUND OR SET. ALL DISTANCES SHOWN IN US SURVEY FEET.



NEW GROWTH
MIXED HARDWOODS
RECEIVED BY LINCOLN COUNTY
SURVEYOR THIS 24TH DAY
OF January 20 08
Tony Oak
COUNTY SURVEYOR

COORDINATES ARE REFERENCED
TO LINCOLN COUNTY COORDINATE
SYSTEM AS DEVELOPED BY THE WI.
DEPARTMENT OF TRANSPORTATION
AND ARE BASED ON GPS OBSERVATIONS
TO CONTROL POINTS AS SUPPLIED BY
LINCOLN COUNTY.

NOT TO SCALE
BEARINGS REFERENCED
TO LINCOLN COUNTY
COORDINATE SYSTEM

A.9

Picture 1 – Looking North From Corner



Picture 2 – Looking East From Corner at Blueline



Picture 3 – Looking South From Corner at Blueline



Picture 4 – Looking West From Corner at Blueline



Picture 5 –Found 1" Iron Pipe with Wood Post at Corner

