

LINCOLN COUNTY U.S. PUBLIC LAND TIE SHEET RECORD

SECTION 6
TOWNSHIP 33N
RANGE 4 E

63342
NO.



LANDMARK

CORNING

CITY, VILLAGE, TOWN

CORNER INDENTITY: 1.0" ALUMINUM PIPE W/CAP

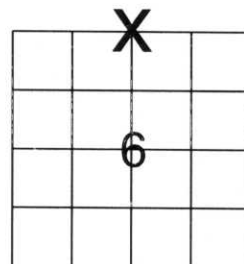
LINCOLN COUNTY COORDINATE: N: 196137.193

E: 304484.142

DATE OF SURVEY: December 17, 2007

SURVEY PARTY: Eron

FOUND
SET
RE-SET
RE-TIED



SECTION



Description of monument found at this corner and if was accepted, state all evidence (material, testimonial, occupational, plats, records, other monuments) used as a basis for accepting. If not accepted or if nothing was found, state evidence used as basis for establishing location. If reestablished through lost corner proportionate methods, indicate all monuments, distances and directions used to establish.

BASIS FOR MONUMENT LOCATION:

(DESCRIBE METHOD OF SURVEY AND CORNER AUTHENTICATION)

Found 1" aluminum pipe with cap at corner. Blue line, Property evidence, and comparison to the original notes supports the 1" aluminum pipe with cap as corner.



CERTIFIED CORRECT:

[Signature]

Ronald Jacobson RLS 2059-008

Registered Land Surveyor

DATE: December 19, 2007



CWE, Inc.

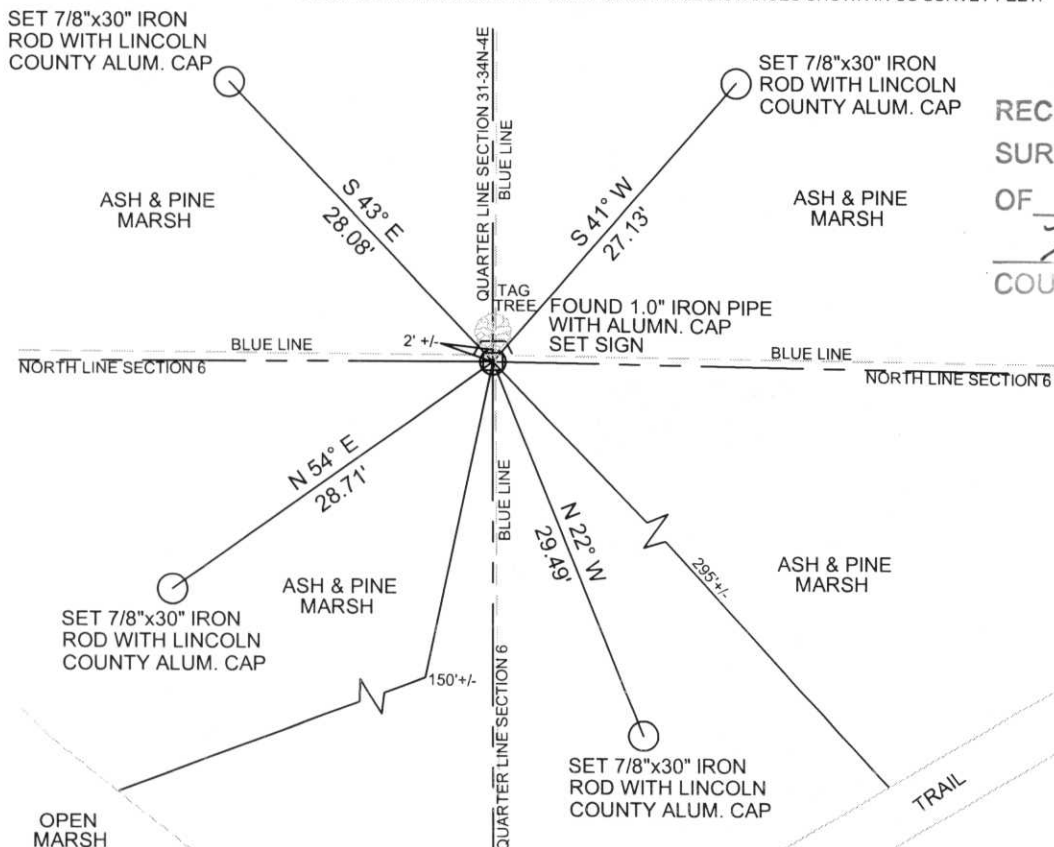
5707 SCHOFIELD AVE.
WESTON, WISCONSIN
54476

PHONE: (715) 359-9400
FAX: (715) 355-4199

general@cwengineers.com
www.cwengineers.com

TIE SKETCH:

SHOW MINIMUM OF FOUR (4) HORIZONTAL TIE DISTANCES TO FIXED WITNESS MONUMENTS.
DESCRIBE ALL MONUMENTS FOUND OR SET. ALL DISTANCES SHOWN IN US SURVEY FEET.



RECEIVED BY LINCOLN COUNTY
SURVEYOR THIS 28TH DAY
OF December 20 07
[Signature]
COUNTY SURVEYOR

COORDINATES ARE REFERENCED TO LINCOLN COUNTY COORDINATE SYSTEM AS DEVELOPED BY THE WI. DEPARTMENT OF TRANSPORTATION AND ARE BASED ON GPS OBSERVATIONS TO CONTROL POINTS AS SUPPLIED BY LINCOLN COUNTY.



NOT TO SCALE
BEARINGS REFERENCED
TO MAGNETIC NORTH

A-3

Picture 1 – Looking North From Corner at Tag Tree and Blue Line



Picture 2 – Looking East From Corner at Blue Line



Picture 3 – Looking South From Corner at Blue Line



Picture 4 – Looking West From Corner at Blue Line



Picture 5 –Found 1.0 Aluminum Pipe with Stamped Cap at Corner

