

U.S. PUBLIC LAND SURVEY MONUMENT RECORD

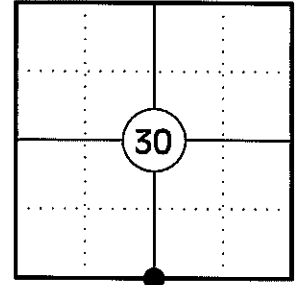
NOTE: THIS FORM IS INTENDED AND DESIGNED TO FULFILL ALL REQUIREMENTS OF WISCONSIN ADMINISTRATIVE CODE CHAPTER A-E 7.08 U.S. PUBLIC LAND SURVEY MONUMENT RECORD (3) (a)(b)(c)(d)(e)(f)(g)(h)(i). AN ADDITIONAL SHEET MAY BE ADDED IF NECESSARY TO CONFIRM WITH SAID REQUIREMENTS.

(a) CORNER LOCATION:

SOUTH 1/4 CORNER OF SECTION 30
 TOWNSHIP 34 NORTH
 RANGE 4 EAST
 TOWN OF TOMAHAWK
 COUNTY OF LINCOLN

LINCOLN COUNTY COORDINATES:

N: 201135.25
 E: 304326.94



(b) HISTORY OF ORIGINAL CORNER:

ORIGINAL SURVEYOR: EDWARD D. PALMER
 DATE OF SURVEY: APRIL 1865

ORIGINAL BEARING TREES: 8" FIR - N15°E, 10 LKS
 6" FIR - S34°W, 13 LKS

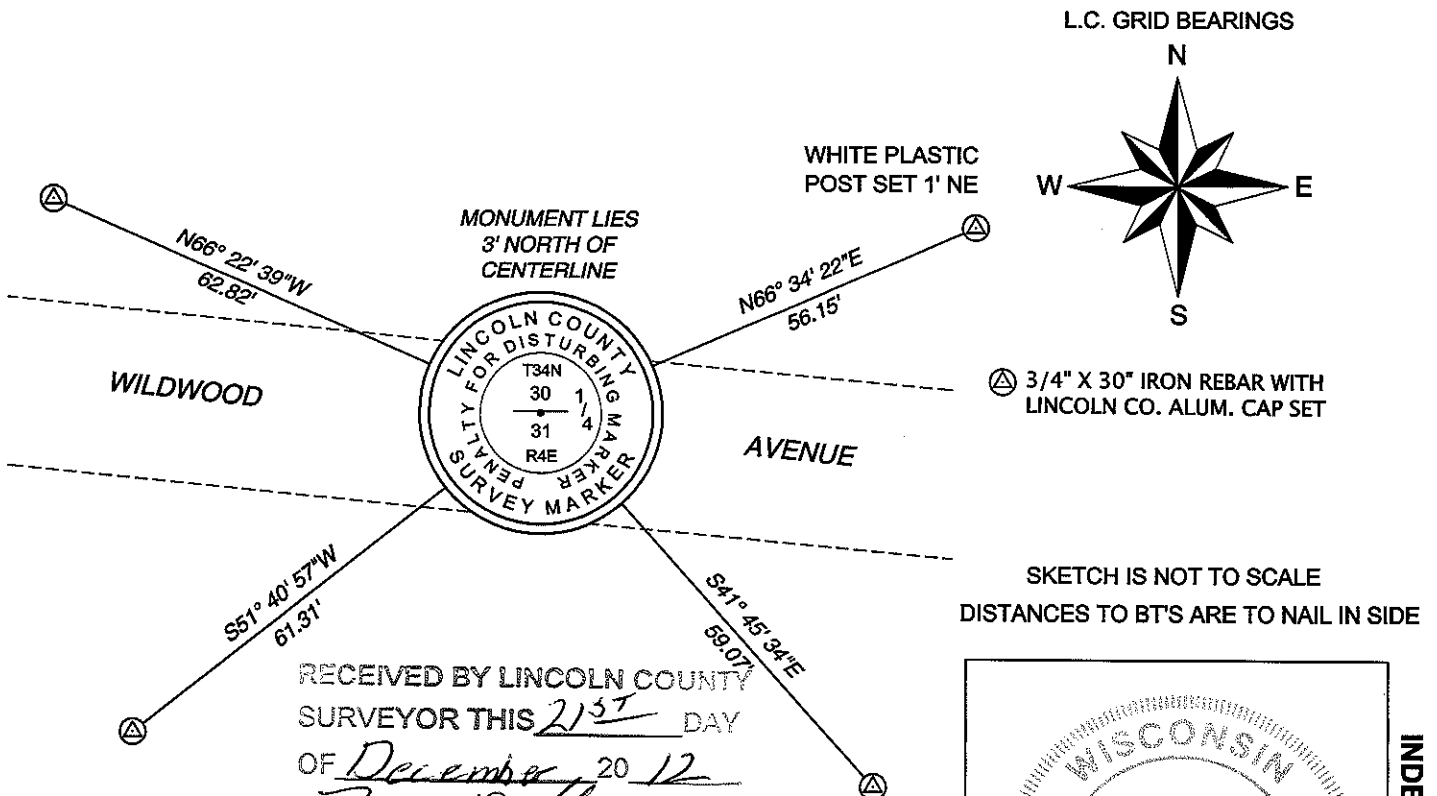
(f)(g)(h) DESCRIPTION OF MONUMENT FOUND AT THIS CORNER AND IF IT WAS ACCEPTED STATE ALL EVIDENCE (MATERIAL, TESTIMONIAL, OCCUPATIONAL, PLATS, RECORDS, OTHER MONUMENTS) USED AS A BASIS FOR ESTABLISHING LOCATION. IF REESTABLISHING THROUGH LOST CORNER PROPORTIONATE METHODS, INDICATE ALL MONUMENTS, DISTANCES, AND DIRECTIONS USED TO ESTABLISH. INDICATE TYPE OF MONUMENT AND SIGN POST FOUND OR SET.

1865: EDWARD D. PALMER SET THE ORIGINAL 1/4 CORNER POST.

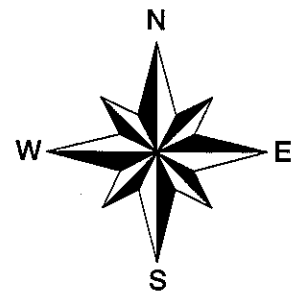
02/26/1997: LESTER SCHMIT SHOWS THE CORNER AS A FOUND 6" X 6" RED GRANITE MONUMENT (L.C. MAP L216A).

10/29/2012: I FOUND NO EVIDENCE OF THE ORIGINAL CORNER. I POSITIONED THE CORNER BY CALCULATING ITS POSITION FROM THE SURVEY MAP BY LESTER SCHMIDT BETWEEN THE SE CORNER OF SECTION 30 AND THE SW CORNER OF SECTION 30 (L.C. MAP L216A). I SET A LINCOLN COUNTY BREAKAWAY BERNTSEN MONUMENT 12" BELOW GRADE AND SET FOUR REFERENCE MONUMENTS TO WITNESS THE CORNER.

(c)(d)(e) PLAN VIEW OF CORNER WITH TIES TO AT LEAST FOUR WITNESSES. IF IN DISAGREEMENT WITH PREVIOUSLY ESTABLISHED CORNER, SHOW THE DISTANCES BETWEEN THE TWO CORNERS AND ALSO INDICATE THE TIE TO THE DISPUTED CORNER.



L.C. GRID BEARINGS



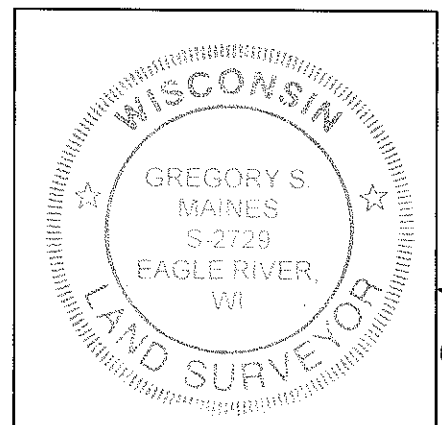
SKETCH IS NOT TO SCALE
 DISTANCES TO BT'S ARE TO NAIL IN SIDE

RECEIVED BY LINCOLN COUNTY
 SURVEYOR THIS 21ST DAY
 OF December, 20 12
Gregory S. Maines
 COUNTY SURVEYOR

CERTIFICATION

I GREGORY S. MAINES, REGISTERED LAND SURVEYOR NO. 2729, HEREBY CERTIFY THAT THE CORNER LOCATION ON THIS RECORD WAS REFERENCED BY ME OR UNDER MY DIRECTION AND CONTROL AND THAT THIS U.S. PUBLIC LAND SURVEY MONUMENT RECORD IS COMPLETE TO THE BEST OF MY KNOWLEDGE AND BELIEF.

Gregory S. Maines
 SIGNATURE



INDEX NO. U-3