

# U.S. PUBLIC LAND SURVEY MONUMENT RECORD

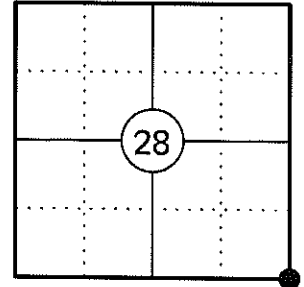
NOTE: THIS FORM IS INTENDED AND DESIGNED TO FULFILL ALL REQUIREMENTS OF WISCONSIN ADMINISTRATIVE CODE CHAPTER A-E 7.08 U.S. PUBLIC LAND SURVEY MONUMENT RECORD (3) (a)(b)(c)(d)(e)(f)(g)(h)(i). AN ADDITIONAL SHEET MAY BE ADDED IF NECESSARY TO CONFIRM WITH SAID REQUIREMENTS.

**(a) CORNER LOCATION:**

SOUTHEAST CORNER OF SECTION 28  
 TOWNSHIP 34 NORTH  
 RANGE 4 EAST  
 TOWN OF TOMAHAWK  
 COUNTY OF LINCOLN

**LINCOLN COUNTY COORDINATES:**

N: 201106.71  
 E: 317412.76



**(b) HISTORY OF ORIGINAL CORNER:**

ORIGINAL SURVEYOR: EDWARD D. PALMER  
 DATE OF SURVEY: APRIL 1865

ORIGINAL BEARING TREES: 18" HEMLOCK - N70°W, 21 LKS  
 10" SUGAR - N51°E, 18 LKS  
 16" HEMLOCK - S50°E, 43 LKS  
 12" SUGAR - S20°W, 22 LKS

**(f)(g)(h) DESCRIPTION OF MONUMENT FOUND AT THIS CORNER AND IF IT WAS ACCEPTED STATE ALL EVIDENCE (MATERIAL, TESTIMONIAL, OCCUPATIONAL, PLATS, RECORDS, OTHER MONUMENTS) USED AS A BASIS FOR ESTABLISHING LOCATION. IF REESTABLISHING THROUGH LOST CORNER PROPORTIONATE METHODS, INDICATE ALL MONUMENTS, DISTANCES, AND DIRECTIONS USED TO ESTABLISH. INDICATE TYPE OF MONUMENT AND SIGN POST FOUND OR SET.**

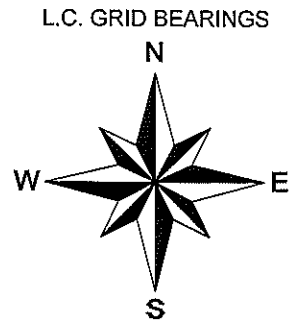
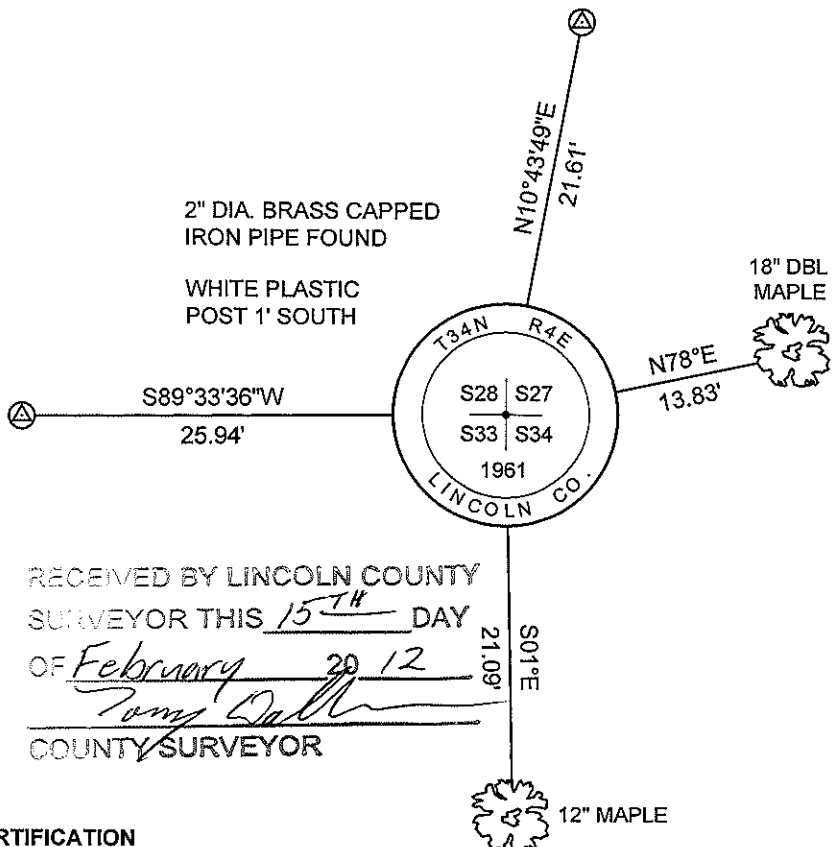
1865: EDWARD D. PALMER SET THE ORIGINAL SECTION CORNER POST.

1963 & 1964: OWENS - ILLINOIS SHOWS A CORNER BY OTHERS WITH FOUR BEARING TREES ON THEIR SURVEYS OF SECTIONS 27 (1963) AND SECTION 34 (1964) PER MAPS PREPARED BY W.H. STUTH ON 03/06/1987 ON FILE IN THE COUNTY SURVEYOR'S OFFICE.

02/26/1997: LESTER SCHMIT SHOWS THE CORNER AS A FOUND 2" CAPPED IRON PIPE (L.C. MAP L216A).

02/03/2012: I FOUND A 2" DIA. IRON PIPE WITH A LINCOLN COUNTY BRASS CAP STAMPED TO IDENTIFY THE CORNER. I ACCEPTED THE MONUMENT AS THE CORNER. I MADE TWO BEARING TREES AND SET TWO 3/4" DIA. IRON REBAR WITH ALUMINUM CAPS TO WITNESS THE CORNER.

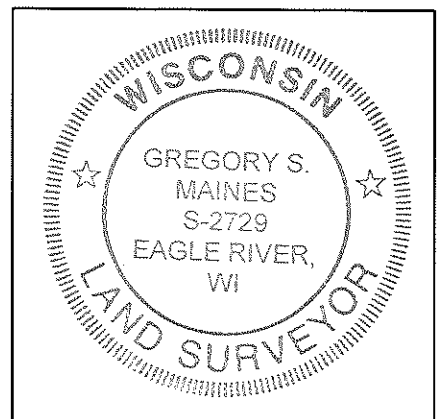
**(c)(d)(e) PLAN VIEW OF CORNER WITH TIES TO AT LEAST FOUR WITNESSES. IF IN DISAGREEMENT WITH PREVIOUSLY ESTABLISHED CORNER, SHOW THE DISTANCES BETWEEN THE TWO CORNERS AND ALSO INDICATE THE TIE TO THE DISPUTED CORNER.**



⊠ 3/4" X 30" IRON REBAR WITH LINCOLN CO. ALUM. CAP SET

SKETCH IS NOT TO SCALE  
 DISTANCES TO BT'S ARE TO NAIL IN SIDE

RECEIVED BY LINCOLN COUNTY SURVEYOR THIS 15<sup>TH</sup> DAY OF February 20 12  
*Gregory S. Maines*  
 COUNTY SURVEYOR



INDEX NO. 4-13

**CERTIFICATION**

I GREGORY S. MAINES, REGISTERED LAND SURVEYOR NO. 2729, HEREBY CERTIFY THAT THE CORNER LOCATION ON THIS RECORD WAS REFERENCED BY ME OR UNDER MY DIRECTION AND CONTROL AND THAT THIS U.S. PUBLIC LAND SURVEY MONUMENT RECORD IS COMPLETE TO THE BEST OF MY KNOWLEDGE AND BELIEF.

*Gregory S. Maines* 2/03/12  
 SIGNATURE

**SOUTHEAST CORNER - SECTION 28, T 34 N, R 4 E**

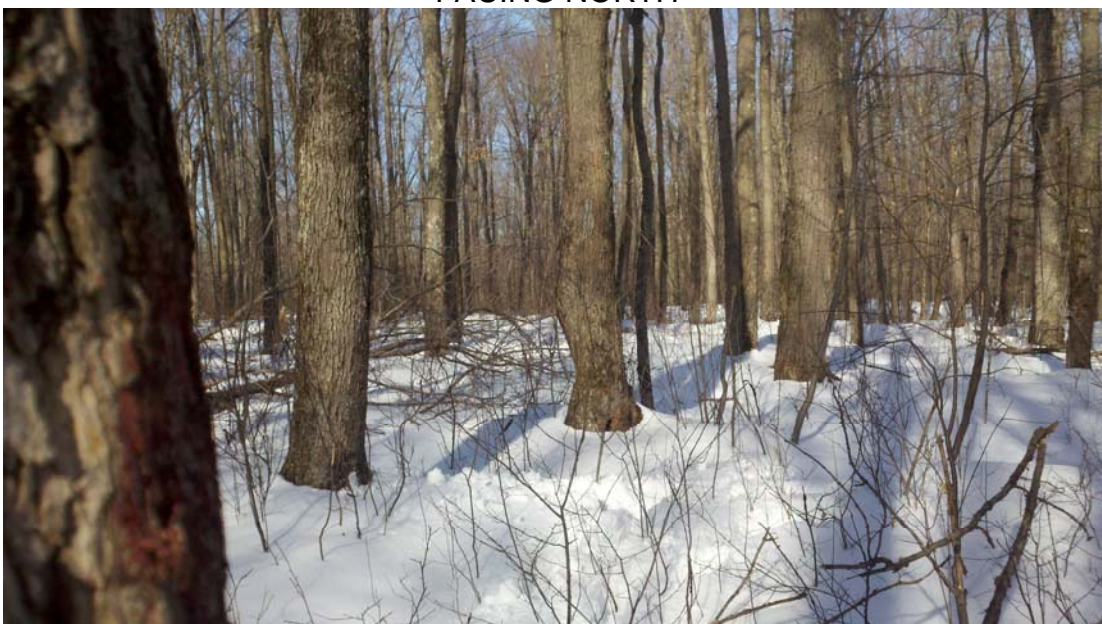
OVERVIEW



MONUMENT FOUND



FACING NORTH



**SOUTHEAST CORNER - SECTION 28, T 34 N, R 4 E**

FACING EAST



FACING SOUTH



FACING WEST

