

U.S. PUBLIC LAND SURVEY MONUMENT RECORD

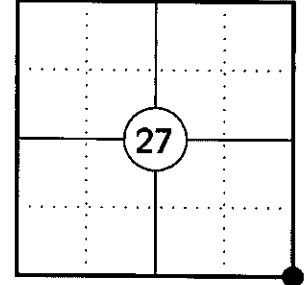
NOTE: THIS FORM IS INTENDED AND DESIGNED TO FULFILL ALL REQUIREMENTS OF WISCONSIN ADMINISTRATIVE CODE CHAPTER A-E 7.08 U.S. PUBLIC LAND SURVEY MONUMENT RECORD (3) (a)(b)(c)(d)(e)(f)(g)(h)(i). AN ADDITIONAL SHEET MAY BE ADDED IF NECESSARY TO CONFIRM WITH SAID REQUIREMENTS.

(a) CORNER LOCATION:

SOUTHEAST CORNER OF SECTION 27
 TOWNSHIP 34 NORTH
 RANGE 4 EAST
 TOWN OF TOMAHAWK
 COUNTY OF LINCOLN

LINCOLN COUNTY COORDINATES:

N: 201048.45
 E: 322793.71



(b) HISTORY OF ORIGINAL CORNER:

ORIGINAL SURVEYOR: EDWARD D. PALMER
 DATE OF SURVEY: APRIL 1865

ORIGINAL BEARING TREES: 20" BIRCH - N15°W, 23 LKS
 12" ELM - N62°E, 50 LKS
 10" BIRCH - S56°E, 26 LKS
 10" HEMLOCK - S47°W, 22 LKS

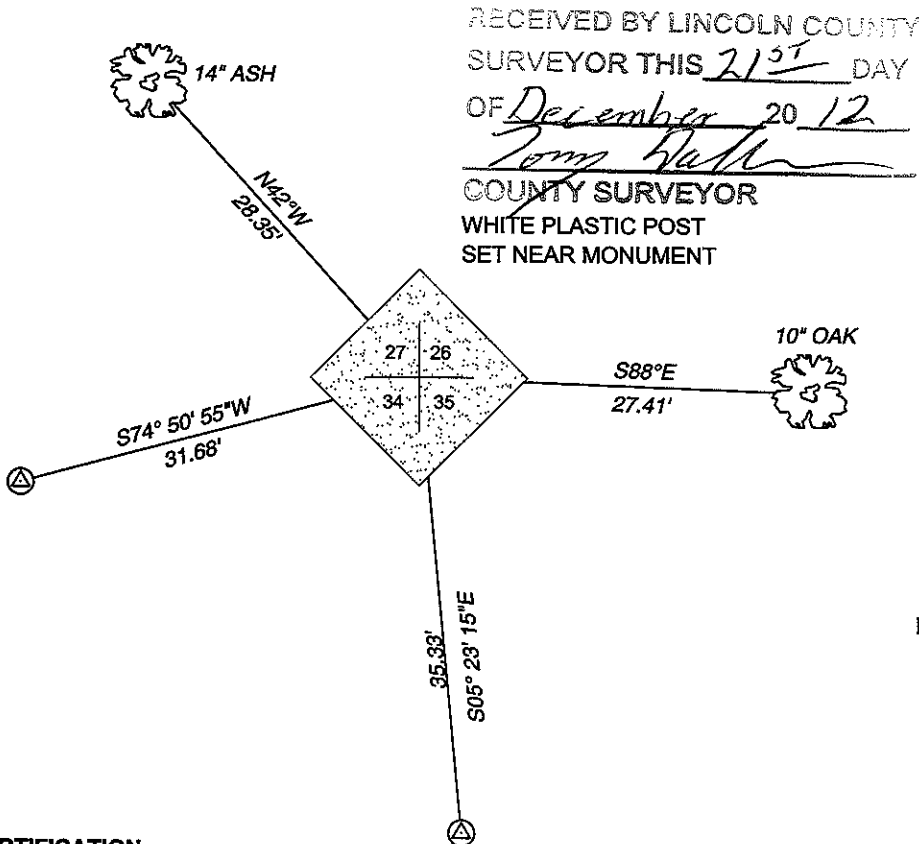
(f)(g)(h) DESCRIPTION OF MONUMENT FOUND AT THIS CORNER AND IF IT WAS ACCEPTED STATE ALL EVIDENCE (MATERIAL, TESTIMONIAL, OCCUPATIONAL, PLATS, RECORDS, OTHER MONUMENTS) USED AS A BASIS FOR ESTABLISHING LOCATION. IF REESTABLISHING THROUGH LOST CORNER PROPORTIONATE METHODS, INDICATE ALL MONUMENTS, DISTANCES, AND DIRECTIONS USED TO ESTABLISH. INDICATE TYPE OF MONUMENT AND SIGN POST FOUND OR SET.

1865: EDWARD D. PALMER SET THE ORIGINAL SECTION CORNER POST.

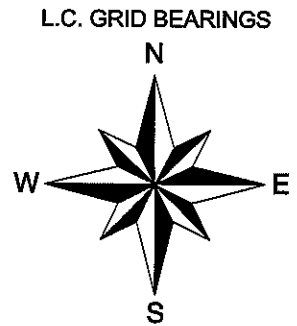
1963: OWENS ILLINOIS SHOWS A CORNER BY OTHERS AT THIS LOCATION AND USED IT AS PART OF THEIR SURVEYS OF SECTION 27 AND SECTION 34 PER MAPS PREPARED BY W.H. STUTH 03/06 /1987 ON FILE IN THE LINCOLN COUNTY SURVEYORS OFFICE.

11/01/2012: I FOUND A 6" SQ. GRANITE MONUMENT AND ACCEPTED THE MONUMENT AS THE CORNER. I MADE TWO BEARING TREES AND SET TWO REFERENCE MONUMENTS TO WITNESS THE CORNER.

(c)(d)(e) PLAN VIEW OF CORNER WITH TIES TO AT LEAST FOUR WITNESSES. IF IN DISAGREEMENT WITH PREVIOUSLY ESTABLISHED CORNER, SHOW THE DISTANCES BETWEEN THE TWO CORNERS AND ALSO INDICATE THE TIE TO THE DISPUTED CORNER.



RECEIVED BY LINCOLN COUNTY
 SURVEYOR THIS 21ST DAY
 OF December 20 12
Tom Hall
 COUNTY SURVEYOR
 WHITE PLASTIC POST
 SET NEAR MONUMENT



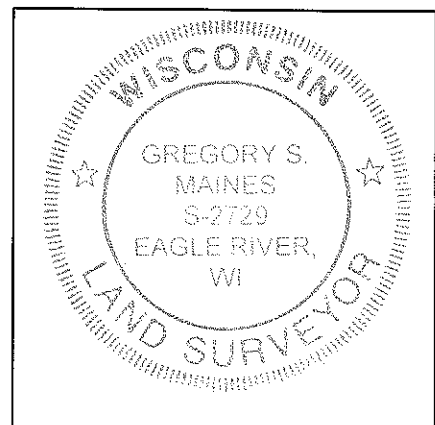
⊕ 3/4" X 30" IRON REBAR WITH
 LINCOLN CO. ALUM. CAP SET

SKETCH IS NOT TO SCALE
 DISTANCES TO BT'S ARE TO NAIL IN SIDE

CERTIFICATION

I GREGORY S. MAINES, REGISTERED LAND SURVEYOR NO. 2729, HEREBY CERTIFY THAT THE CORNER LOCATION ON THIS RECORD WAS REFERENCED BY ME OR UNDER MY DIRECTION AND CONTROL AND THAT THIS U.S. PUBLIC LAND SURVEY MONUMENT RECORD IS COMPLETE TO THE BEST OF MY KNOWLEDGE AND BELIEF.

SIGNATURE *Gregory S. Maines*



INDEX NO. U-17