

U.S. PUBLIC LAND SURVEY MONUMENT RECORD

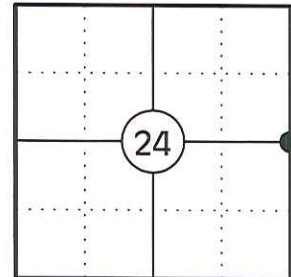
NOTE: THIS FORM IS INTENDED AND DESIGNED TO FULFILL ALL REQUIREMENTS OF WISCONSIN ADMINISTRATIVE CODE CHAPTER A-E 7.08 U.S. PUBLIC LAND SURVEY MONUMENT RECORD (3) (a)(b)(c)(d)(e)(f)(g)(h)(i). AN ADDITIONAL SHEET MAY BE ADDED IF NECESSARY TO CONFIRM WITH SAID REQUIREMENTS.

(a) CORNER LOCATION:

EAST 1/4 CORNER OF SECTION 24
 TOWNSHIP 34 NORTH
 RANGE 4 EAST
 TOWN OF TOMAHAWK
 COUNTY OF LINCOLN

LINCOLN COUNTY COORDINATES:

N: 209112.50
 E: 333432.29



(b) HISTORY OF ORIGINAL CORNER:

ORIGINAL SURVEYOR: JAMES M. MARSH
 DATE OF SURVEY: AUG. 1851

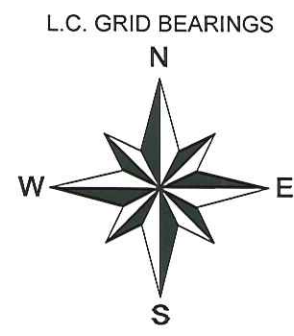
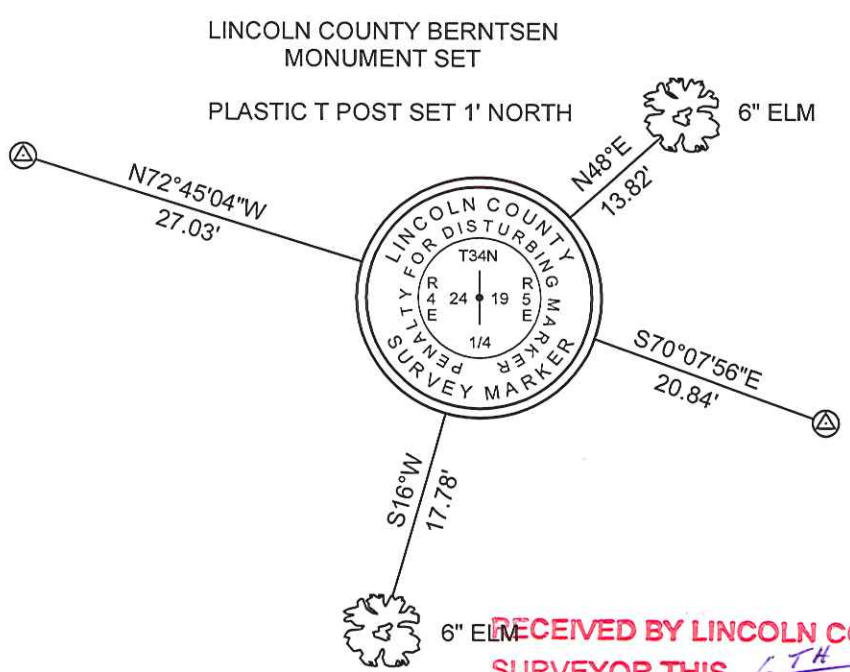
ORIGINAL BEARING TREES: 14" HEMLOCK - S31°E, 48 LKS
 12" HEMLOCK - S15°W, 32 LKS
 12" SUGAR - N24°W, 7 LKS
 12" HEMLOCK - N32°E, 6 LKS

(f)(g)(h) DESCRIPTION OF MONUMENT FOUND AT THIS CORNER AND IF IT WAS ACCEPTED STATE ALL EVIDENCE (MATERIAL, TESTIMONIAL, OCCUPATIONAL, PLATS, RECORDS, OTHER MONUMENTS) USED AS A BASIS FOR ESTABLISHING LOCATION. IF REESTABLISHING THROUGH LOST CORNER PROPORTIONATE METHODS, INDICATE ALL MONUMENTS, DISTANCES, AND DIRECTIONS USED TO ESTABLISH. INDICATE TYPE OF MONUMENT AND SIGN POST FOUND OR SET.

1851: JAMES M. MARSH SET THE ORIGINAL 1/4 CORNER POST.

02/21/2012: I FOUND NO EVIDENCE OF THE ORIGINAL CORNER OR THE ACCESSORIES. I POSITIONED THE CORNER BY SINGLE PROPORTION USING THE SE CORNER OF SECTION 36 AND THE NE CORNER OF SECTION 24. I SET A 1" X 60" ALUMINUM CAPPED MONUMENT FOR THE CORNER AND SET TWO 1" X 30" ALUMINUM CAPPED MONUMENTS AND MADE TWO BEARING TREES TO WITNESS THE CORNER.

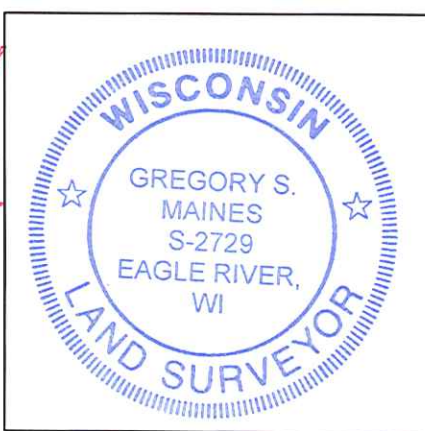
(c)(d)(e) PLAN VIEW OF CORNER WITH TIES TO AT LEAST FOUR WITNESSES. IF IN DISAGREEMENT WITH PREVIOUSLY ESTABLISHED CORNER, SHOW THE DISTANCES BETWEEN THE TWO CORNERS AND ALSO INDICATE THE TIE TO THE DISPUTED CORNER.



⊗ 3/4" X 30" IRON REBAR WITH LINCOLN CO. ALUM. CAP SET

SKETCH IS NOT TO SCALE
 DISTANCES TO BT'S ARE TO NAIL IN SIDE

RECEIVED BY LINCOLN COUNTY SURVEYOR THIS 6TH DAY OF March 20 12
Gregory S. Maines
 COUNTY SURVEYOR



INDEX NO. 0-25

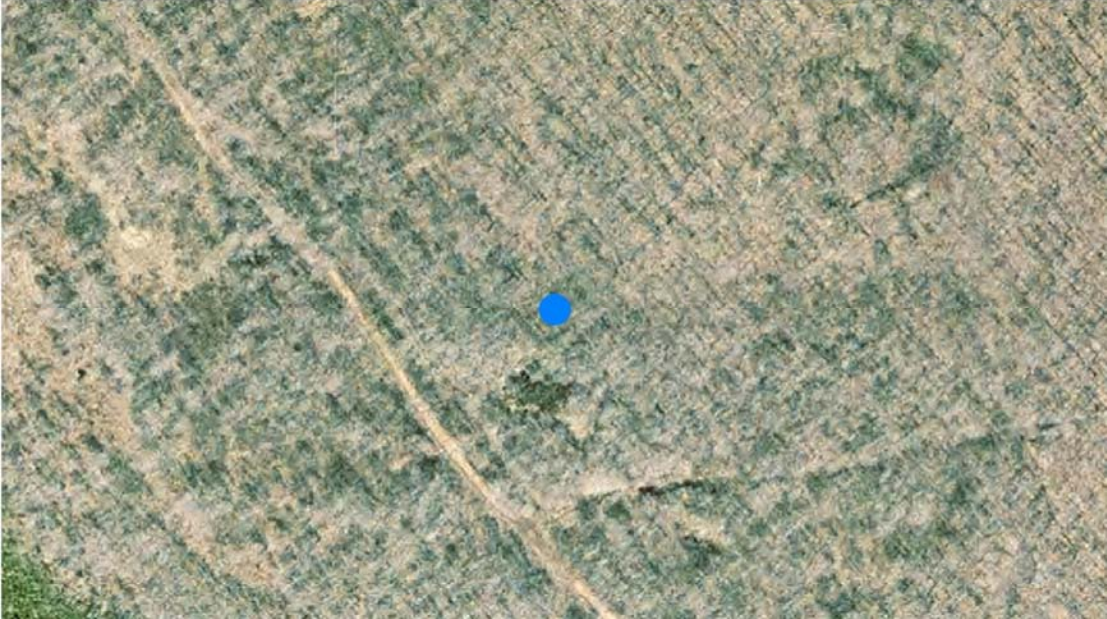
CERTIFICATION

I GREGORY S. MAINES, REGISTERED LAND SURVEYOR NO. 2729, HEREBY CERTIFY THAT THE CORNER LOCATION ON THIS RECORD WAS REFERENCED BY ME OR UNDER MY DIRECTION AND CONTROL AND THAT THIS U.S. PUBLIC LAND SURVEY MONUMENT RECORD IS COMPLETE TO THE BEST OF MY KNOWLEDGE AND BELIEF.

Gregory S. Maines 2/21/12
 SIGNATURE

EAST 1/4 CORNER - SECTION 24, T 34 N, R 4 E

OVERVIEW



MONUMENT SET



FACING NORTH



EAST 1/4 CORNER - SECTION 24, T 34 N, R 4 E

FACING EAST



FACING SOUTH



FACING WEST

