

# U.S. PUBLIC LAND SURVEY MONUMENT RECORD

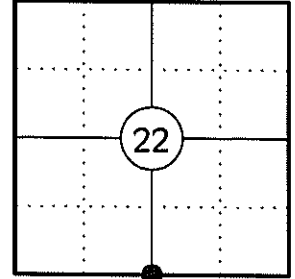
NOTE: THIS FORM IS INTENDED AND DESIGNED TO FULFILL ALL REQUIREMENTS OF WISCONSIN ADMINISTRATIVE CODE CHAPTER A-E 7.08 U.S. PUBLIC LAND SURVEY MONUMENT RECORD (3) (a)(b)(c)(d)(e)(f)(g)(h)(i). AN ADDITIONAL SHEET MAY BE ADDED IF NECESSARY TO CONFIRM WITH SAID REQUIREMENTS.

**(a) CORNER LOCATION:**

SOUTH 1/4 CORNER OF SECTION 22  
 TOWNSHIP 34 NORTH  
 RANGE 4 EAST  
 TOWN OF TOMAHAWK  
 COUNTY OF LINCOLN

**LINCOLN COUNTY COORDINATES:**

N: 206292.49  
 E: 320455.88



**(b) HISTORY OF ORIGINAL CORNER:**

ORIGINAL SURVEYOR: EDWARD D. PALMER  
 DATE OF SURVEY: APRIL 1865

ORIGINAL BEARING TREES: 10" ELM - N45°E, 19 LKS  
 14" CEDAR - S23°E, 13 LKS

**(f)(g)(h) DESCRIPTION OF MONUMENT FOUND AT THIS CORNER AND IF IT WAS ACCEPTED STATE ALL EVIDENCE (MATERIAL, TESTIMONIAL, OCCUPATIONAL, PLATS, RECORDS, OTHER MONUMENTS) USED AS A BASIS FOR ESTABLISHING LOCATION. IF REESTABLISHING THROUGH LOST CORNER PROPORTIONATE METHODS, INDICATE ALL MONUMENTS, DISTANCES, AND DIRECTIONS USED TO ESTABLISH. INDICATE TYPE OF MONUMENT AND SIGN POST FOUND OR SET.**

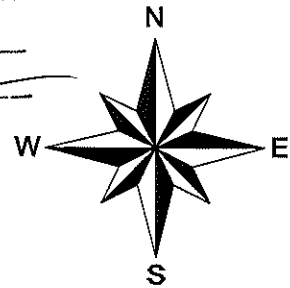
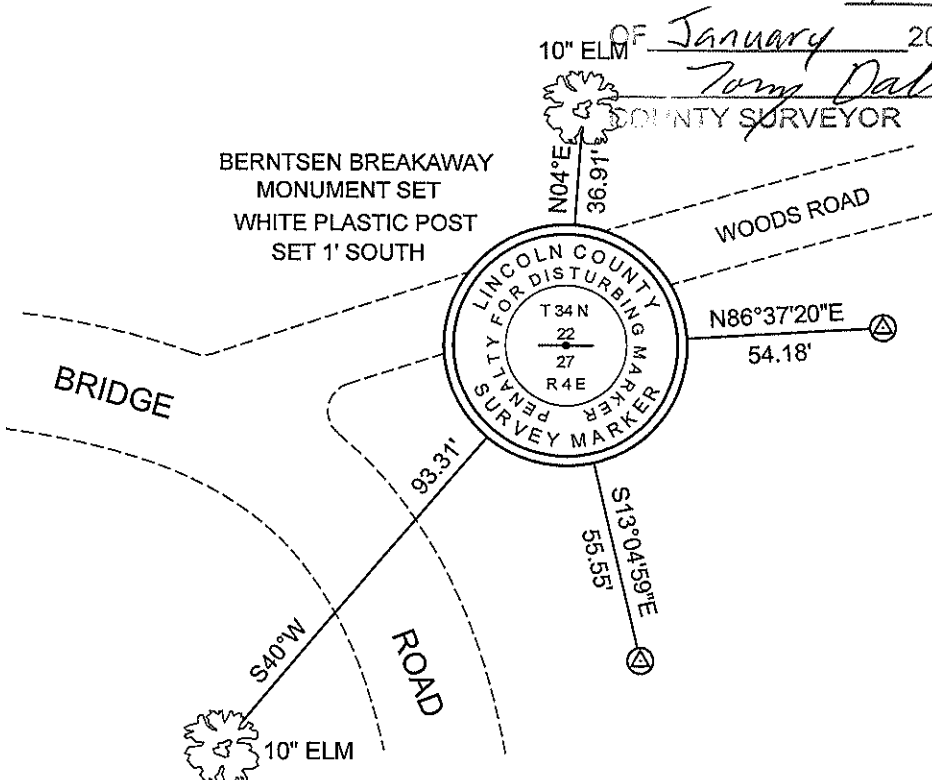
- 1865: EDWARD D. PALMER SET THE ORIGINAL 1/4 CORNER POST.
- 1963: OWENS ILLINOIS SHOWS A CORNER BY OTHERS AT THIS LOCATION AND USED IT AS PART OF THEIR SURVEY OF SECTION 27 PER MAP PREPARED BY W.H. STUTH 03/06/1987 ON FILE IN THE LINCOLN CO. SURVEYORS OFFICE.
- 01/13/2012: I FOUND A 4" SQ. CONCRETE MONUMENT WITH AN IRON CAP BROKEN OFF AND LEANING OVER. I ACCEPTED THE BASE OF THIS MONUMENT AS THE CORNER. I REPLACED THE CONCRETE MONUMENT WITH A LINCOLN COUNTY BERNTSEN BREAKAWAY MONUMENT AND MADE TWO BEARING TREES AND SET TWO 3/4" DIA. IRON REBAR WITH ALUMINUM CAPS TO WITNESS THE CORNER.

**(c)(d)(e) PLAN VIEW OF CORNER WITH TIES TO AT LEAST FOUR WITNESSES. IF IN DISAGREEMENT WITH PREVIOUSLY ESTABLISHED CORNER, SHOW THE DISTANCES BETWEEN THE TWO CORNERS AND ALSO INDICATE THE TIE TO THE DISPUTED CORNER.**

RECEIVED BY LINCOLN COUNTY  
 SURVEYOR THIS 18<sup>TH</sup> DAY L.C. GRID BEARINGS

OF January 20, 12

*Tom Dalko*  
 COUNTY SURVEYOR



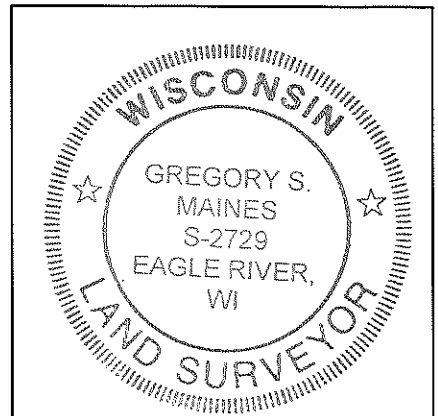
⊕ 3/4" X 30" IRON REBAR WITH LINCOLN CO. ALUM. CAP SET

SKETCH IS NOT TO SCALE  
 DISTANCES TO BT'S ARE TO NAIL IN SIDE

**CERTIFICATION**

I GREGORY S. MAINES, REGISTERED LAND SURVEYOR NO. 2729, HEREBY CERTIFY THAT THE CORNER LOCATION ON THIS RECORD WAS REFERENCED BY ME OR UNDER MY DIRECTION AND CONTROL AND THAT THIS U.S. PUBLIC LAND SURVEY MONUMENT RECORD IS COMPLETE TO THE BEST OF MY KNOWLEDGE AND BELIEF.

*Gregory S. Maines* 1/13/12  
 SIGNATURE



INDEX NO. Q-15

**SOUTH 1/4 CORNER - SECTION 22, T 34 N, R 4 E**

OVERVIEW



MONUMENT FOUND



MONUMENT SET



FACING NORTH



**SOUTH 1/4 CORNER - SECTION 22, T 34 N, R 4 E**

FACING EAST



FACING SOUTH



FACING WEST

