

U.S. PUBLIC LAND SURVEY MONUMENT RECORD

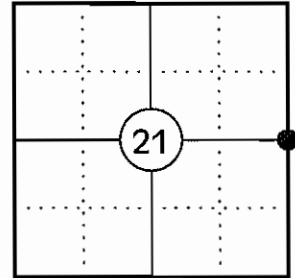
NOTE: THIS FORM IS INTENDED AND DESIGNED TO FULFILL ALL REQUIREMENTS OF WISCONSIN ADMINISTRATIVE CODE CHAPTER A-E 7.08 U.S. PUBLIC LAND SURVEY MONUMENT RECORD (3) (a)(b)(c)(d)(e)(f)(g)(h)(i). AN ADDITIONAL SHEET MAY BE ADDED IF NECESSARY TO CONFIRM WITH SAID REQUIREMENTS.

(a) CORNER LOCATION:

EAST 1/4 CORNER OF SECTION 21
 TOWNSHIP 34 NORTH
 RANGE 4 EAST
 TOWN OF TOMAHAWK
 COUNTY OF LINCOLN

LINCOLN COUNTY COORDINATES:

N: 208715.37
 E: 317722.49



(b) HISTORY OF ORIGINAL CORNER:

ORIGINAL SURVEYOR: EDWARD D. PALMER
 DATE OF SURVEY: APRIL 1865

ORIGINAL BEARING TREES: 7" HEMLOCK - N70°W, 24 LKS
 9" FIR - N61°E, 14 LKS

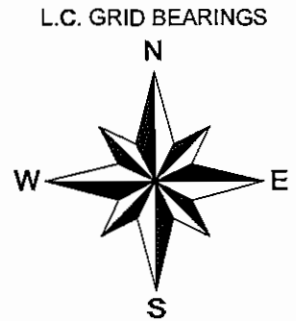
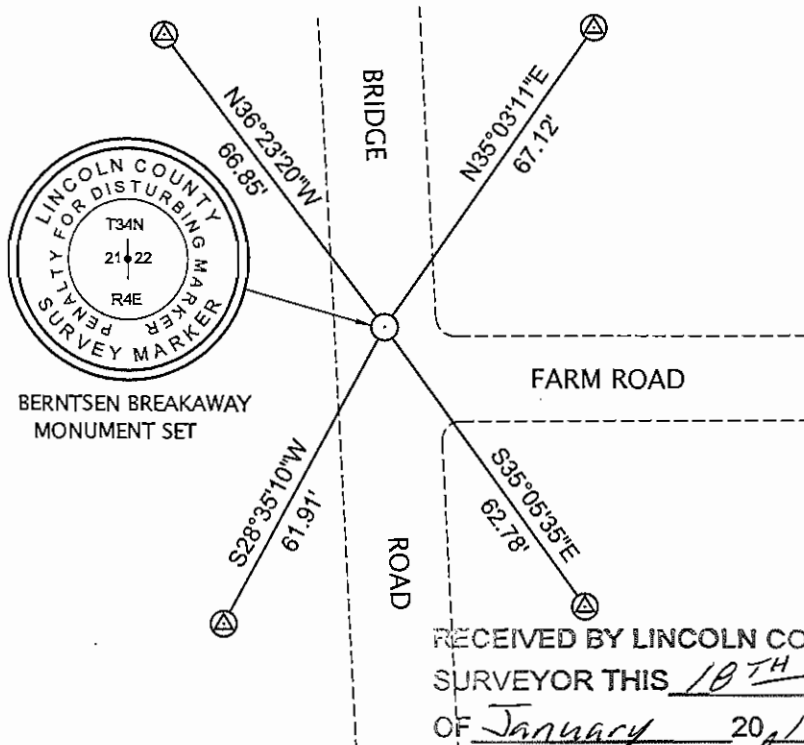
(f)(g)(h) DESCRIPTION OF MONUMENT FOUND AT THIS CORNER AND IF IT WAS ACCEPTED STATE ALL EVIDENCE (MATERIAL, TESTIMONIAL, OCCUPATIONAL, PLATS, RECORDS, OTHER MONUMENTS) USED AS A BASIS FOR ESTABLISHING LOCATION. IF REESTABLISHING THROUGH LOST CORNER PROPORTIONATE METHODS, INDICATE ALL MONUMENTS, DISTANCES, AND DIRECTIONS USED TO ESTABLISH. INDICATE TYPE OF MONUMENT AND SIGN POST FOUND OR SET.

1865: EDWARD D. PALMER SET THE ORIGINAL 1/4 CORNER POST.

01/13/2012: I EXCAVATED THE ROAD WITH THE LINCOLN COUNTY HIGHWAY DEPT. AT THE CORNER LOCATION AND FOUND NO EVIDENCE OF THE ORIGINAL CORNER. I ESTABLISH THE NORthing FOR CORNER BY PROPORTION, USING THE NE AND SE CORNERS OF SEC 21 AND USED THE CENTERLINE OF BRIDGE ROAD TO ESTABLISH THE EASTING. THIS POSITION FITS WELL WITH THE EXISTING OCCUPATION. I SET A LINCOLN COUNTY BERNTSEN BREAKAWAY MONUMENT 8" BELOW GRADE IN THE CENTERLINE OF BRIDGE ROAD TO MONUMENT THE CORNER AND SET FOUR 3/4" DIA. IRON REBAR TO WITNESS THE CORNER.

(c)(d)(e) PLAN VIEW OF CORNER WITH TIES TO AT LEAST FOUR WITNESSES. IF IN DISAGREEMENT WITH PREVIOUSLY ESTABLISHED CORNER, SHOW THE DISTANCES BETWEEN THE TWO CORNERS AND ALSO INDICATE THE TIE TO THE DISPUTED CORNER.

WHITE PLASTIC POST IS 1' NORTHWEST



⊙ 3/4" X 30" IRON REBAR WITH LINCOLN CO. ALUM. CAP SET

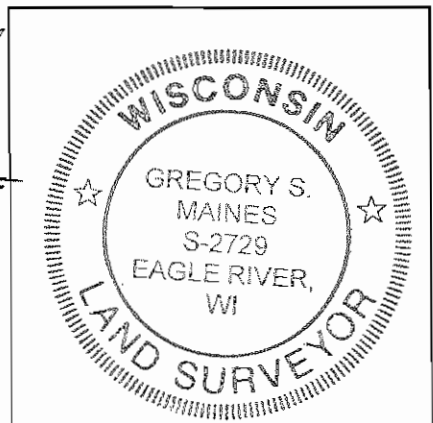
SKETCH IS NOT TO SCALE

RECEIVED BY LINCOLN COUNTY SURVEYOR THIS 10TH DAY OF January 2012
Gregory S. Maines
 COUNTY SURVEYOR

CERTIFICATION

I GREGORY S. MAINES, REGISTERED LAND SURVEYOR NO. 2729, HEREBY CERTIFY THAT THE CORNER LOCATION ON THIS RECORD WAS REFERENCED BY ME OR UNDER MY DIRECTION AND CONTROL AND THAT THIS U.S. PUBLIC LAND SURVEY MONUMENT RECORD IS COMPLETE TO THE BEST OF MY KNOWLEDGE AND BELIEF.

Gregory S. Maines 1/13/12
 SIGNATURE



INDEX NO. 0-13

EAST 1/4 CORNER - SECTION 21, T 34 N, R 4 E

OVERVIEW



FACING NORTH



FACING EAST



EAST 1/4 CORNER - SECTION 21, T 34 N, R 4 E

FACING SOUTH



FACING WEST

