

U.S. PUBLIC LAND SURVEY MONUMENT RECORD

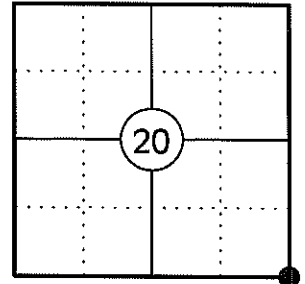
NOTE: THIS FORM IS INTENDED AND DESIGNED TO FULFILL ALL REQUIREMENTS OF WISCONSIN ADMINISTRATIVE CODE CHAPTER A-E 7.08 U.S. PUBLIC LAND SURVEY MONUMENT RECORD (3) (a)(b)(c)(d)(e)(f)(g)(h)(i). AN ADDITIONAL SHEET MAY BE ADDED IF NECESSARY TO CONFIRM WITH SAID REQUIREMENTS.

(a) CORNER LOCATION:

SOUTHEAST CORNER OF SECTION 20
 TOWNSHIP 34 NORTH
 RANGE 4 EAST
 TOWN OF TOMAHAWK
 COUNTY OF LINCOLN

LINCOLN COUNTY COORDINATES:

N: 206363.03
 E: 312493.78



(b) HISTORY OF ORIGINAL CORNER:

ORIGINAL SURVEYOR: EDWARD D. PALMER
 DATE OF SURVEY: APRIL 1865

ORIGINAL BEARING TREES: 20" HEMLOCK - N72°W, 13 LKS
 12" HEMLOCK - N43°E, 17 LKS
 5" HEMLOCK - S56°E, 14 LKS
 16" HEMLOCK - S25°W, 10 LKS

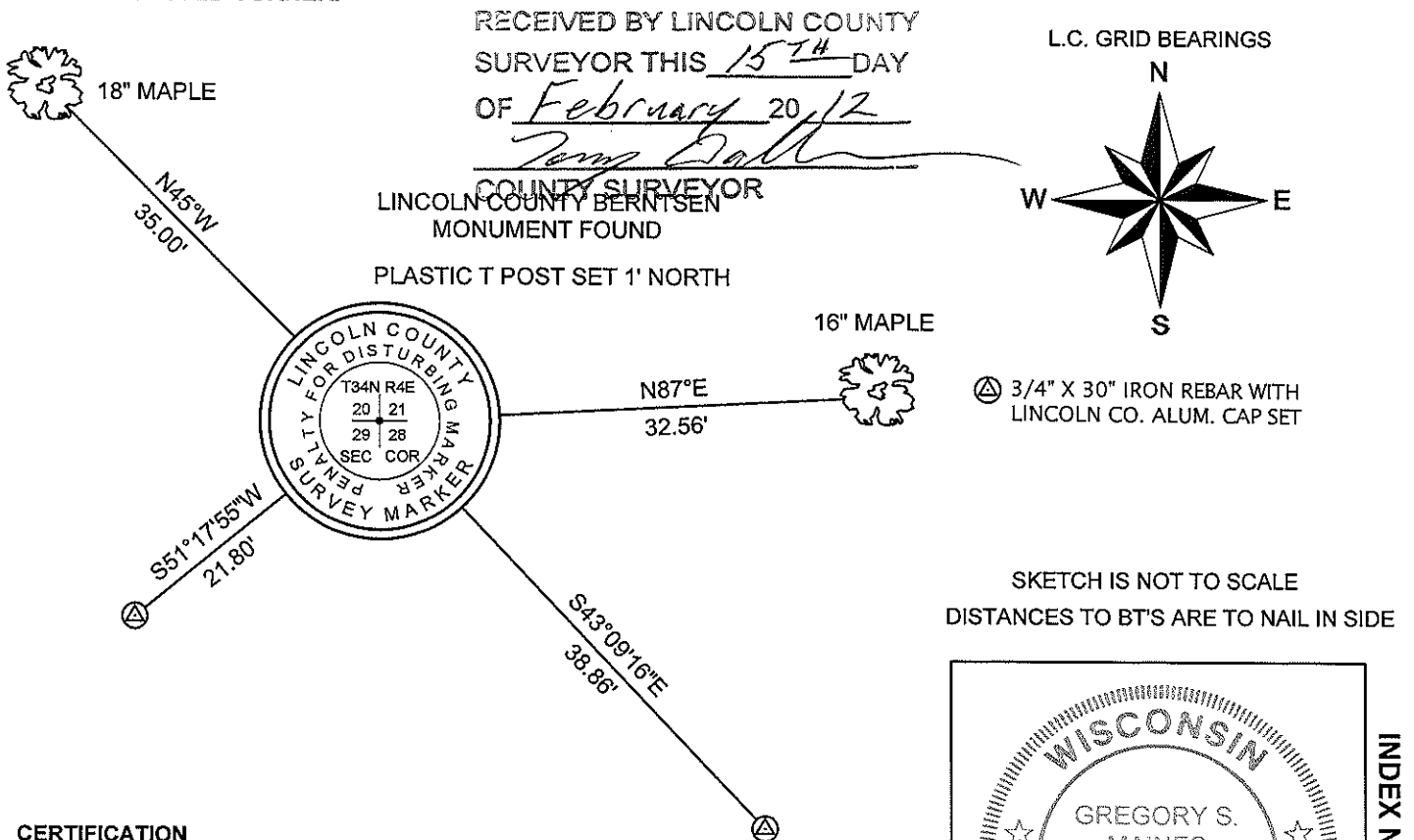
(f)(g)(h) DESCRIPTION OF MONUMENT FOUND AT THIS CORNER AND IF IT WAS ACCEPTED STATE ALL EVIDENCE (MATERIAL, TESTIMONIAL, OCCUPATIONAL, PLATS, RECORDS, OTHER MONUMENTS) USED AS A BASIS FOR ESTABLISHING LOCATION. IF REESTABLISHING THROUGH LOST CORNER PROPORTIONATE METHODS, INDICATE ALL MONUMENTS, DISTANCES, AND DIRECTIONS USED TO ESTABLISH. INDICATE TYPE OF MONUMENT AND SIGN POST FOUND OR SET.

1865: EDWARD D. PALMER SET THE ORIGINAL SECTION CORNER POST.

02/26/1997: LESTER SCHMIT SHOWS THE CORNER AS A BERNTSEN MONUMENT SET. (L.C. MAP L216A).

01/18/2012: I FOUND A LINCOLN COUNTY BERNTSEN MONUMENT AT THE CORNER LOCATION. I ACCEPTED THE MONUMENT AS THE CORNER. I MADE TWO BEARING TREES AND SET TWO 3/4" DIA. IRON REBAR WITH ALUMINUM CAPS TO WITNESS THE CORNER.

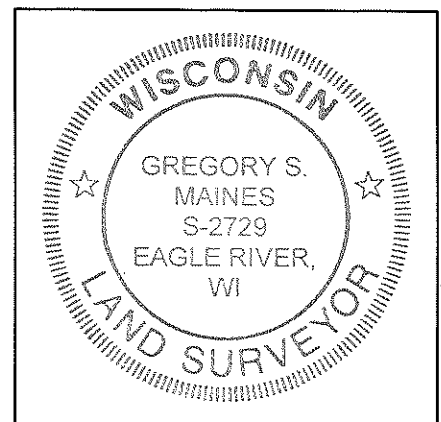
(c)(d)(e) PLAN VIEW OF CORNER WITH TIES TO AT LEAST FOUR WITNESSES. IF IN DISAGREEMENT WITH PREVIOUSLY ESTABLISHED CORNER, SHOW THE DISTANCES BETWEEN THE TWO CORNERS AND ALSO INDICATE THE TIE TO THE DISPUTED CORNER.



CERTIFICATION

I GREGORY S. MAINES, REGISTERED LAND SURVEYOR NO. 2729, HEREBY CERTIFY THAT THE CORNER LOCATION ON THIS RECORD WAS REFERENCED BY ME OR UNDER MY DIRECTION AND CONTROL AND THAT THIS U.S. PUBLIC LAND SURVEY MONUMENT RECORD IS COMPLETE TO THE BEST OF MY KNOWLEDGE AND BELIEF.

Gregory S. Maines 1/18/2012
 SIGNATURE



INDEX NO. Q-9

SOUTHEAST CORNER - SECTION 20, T 34 N, R 4 E

OVERVIEW



MONUMENT FOUND



FACING NORTH



SOUTHEAST CORNER - SECTION 20, T 34 N, R 4 E

FACING EAST



FACING SOUTH



FACING WEST

