

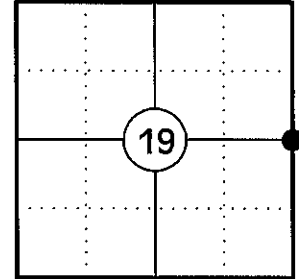
U.S. PUBLIC LAND SURVEY MONUMENT RECORD

NOTE: THIS FORM IS INTENDED AND DESIGNED TO FULFILL ALL REQUIREMENTS OF WISCONSIN ADMINISTRATIVE CODE CHAPTER A-E 7.08 U.S. PUBLIC LAND SURVEY MONUMENT RECORD (3) (a)(b)(c)(d)(e)(f)(g)(h)(i). AN ADDITIONAL SHEET MAY BE ADDED IF NECESSARY TO CONFIRM WITH SAID REQUIREMENTS.

(a) CORNER LOCATION:

EAST 1/4 CORNER OF SECTION 19
 TOWNSHIP 34 NORTH
 RANGE 4 EAST
 TOWN OF TOMAHAWK
 COUNTY OF LINCOLN

LINCOLN COUNTY COORDINATES:



(b) HISTORY OF ORIGINAL CORNER:

ORIGINAL SURVEYOR: EDWARD D. PALMER
 DATE OF SURVEY: APRIL 1865

ORIGINAL BEARING TREES: 10" TAMARAC - N70°E, 15 LKS
 4" TAMARAC - S60°E, 18 LKS

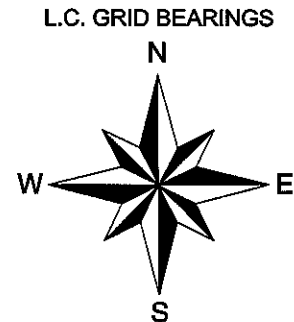
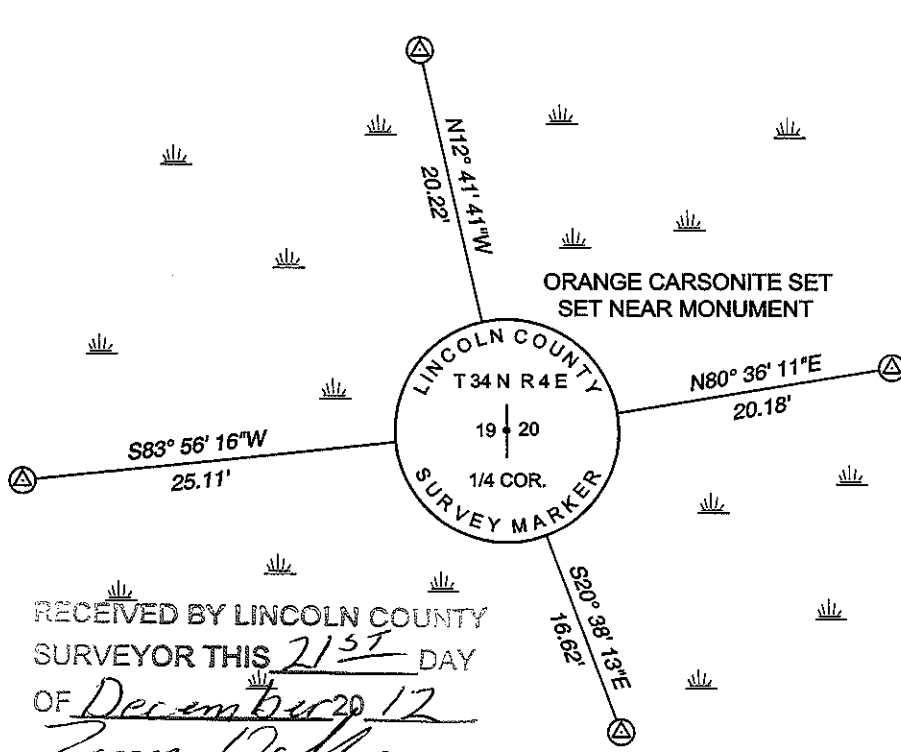
(f)(g)(h) DESCRIPTION OF MONUMENT FOUND AT THIS CORNER AND IF IT WAS ACCEPTED STATE ALL EVIDENCE (MATERIAL, TESTIMONIAL, OCCUPATIONAL, PLATS, RECORDS, OTHER MONUMENTS) USED AS A BASIS FOR ESTABLISHING LOCATION. IF REESTABLISHING THROUGH LOST CORNER PROPORTIONATE METHODS, INDICATE ALL MONUMENTS, DISTANCES, AND DIRECTIONS USED TO ESTABLISH. INDICATE TYPE OF MONUMENT AND SIGN POST FOUND OR SET.

1865: EDWARD D. PALMER SET THE ORIGINAL 1/4 CORNER POST.

02/26/1997: LESTER SCHMIT SHOWS THE CORNER AS A BERNSTEN MONUMENT SET. IT APPEARS THAT HE SET THE CORNER BY SINGLE PROPORTION BETWEEN N ECORNER AND SE CORNER OF SECTION 19 (L.C. MAP L216A).

12/06/2012: I FOUND AN ALUMINUM "SWAMP ROD" WITH A 3" DIA. ALUMINUM CAP STAMPED TO IDENTIFY THE CORNER. I ACCEPTED THE MONUMENT AS THE CORNER AND SET FOUR REFERENCE MONUMENTS TO WITNESS THE CORNER.

(c)(d)(e) PLAN VIEW OF CORNER WITH TIES TO AT LEAST FOUR WITNESSES. IF IN DISAGREEMENT WITH PREVIOUSLY ESTABLISHED CORNER, SHOW THE DISTANCES BETWEEN THE TWO CORNERS AND ALSO INDICATE THE TIE TO THE DISPUTED CORNER.



⊙ 1" X 30" CAPPED ALUMINUM MONUMENT STAMPED WIT. COR.

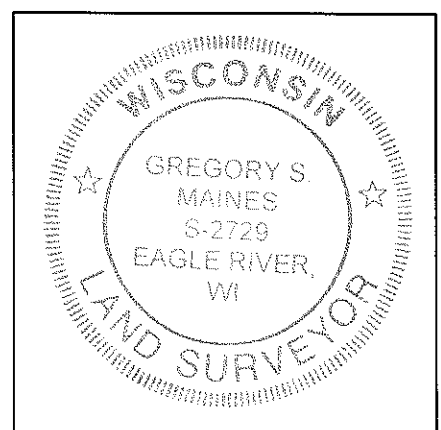
SKETCH IS NOT TO SCALE
 DISTANCES TO BT'S ARE TO NAIL IN SIDE

RECEIVED BY LINCOLN COUNTY SURVEYOR THIS 21ST DAY OF December 20 12
Gregory S. Maines
 COUNTY SURVEYOR

CERTIFICATION

I GREGORY S. MAINES, REGISTERED LAND SURVEYOR NO. 2729, HEREBY CERTIFY THAT THE CORNER LOCATION ON THIS RECORD WAS REFERENCED BY ME OR UNDER MY DIRECTION AND CONTROL AND THAT THIS U.S. PUBLIC LAND SURVEY MONUMENT RECORD IS COMPLETE TO THE BEST OF MY KNOWLEDGE AND BELIEF.

Gregory S. Maines
 SIGNATURE



INDEX NO. 0-5