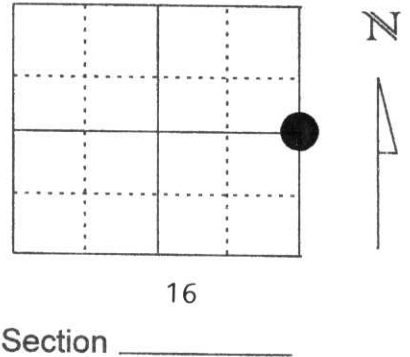


# U.S. PUBLIC LAND SURVEY MONUMENT RECORD

Note: This form is intended and designed to fulfill all requirements of Wisconsin Administrative Code, Chapter A-E 5.02, U.S. Public Land Survey Monument Record (3) (a) (b) (c) (d) (e) (f) (g) (h) (i). An additional sheet may be added if necessary to conform with said requirements.

(a) Corner location: Township 34 North  
 Range 4 East  
 Town/City/Village TN. TOMAHAWK  
 County Lincoln

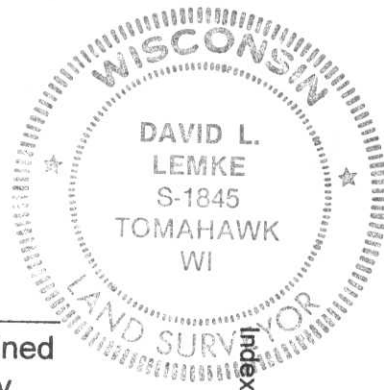
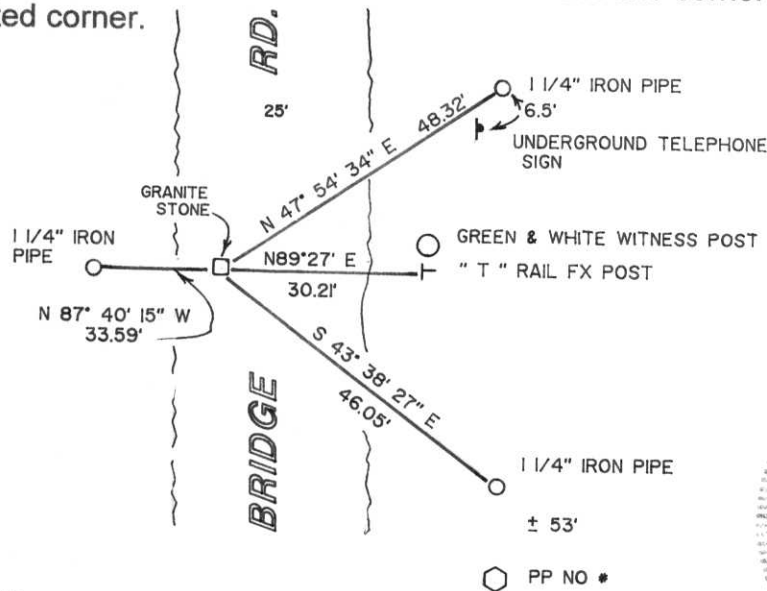


(b) (f) (g) (h) Description of monument found at this corner and if it was accepted, state all evidence (material, testimonial, occupational, plats, records, other monuments) used as a basis for accepting. If not accepted or if nothing was found, state evidence used as basis for establishing location. If reestablished through lost corner proportionate methods, indicate all monuments, distances and directions used to establish.

FOUND 6"x6" GRANITE STONE AT ROAD SURFACE. APPEARS TO HAVE BEEN NICKED A FEW TIMES BY A PLOW.  
 FOUND A 1 1/4" IRON PIPE TO THE WEST ON A CUT LINE AND A "T" RAIL FENCE POST TO THE EAST NEXT TO A GREEN & WHITE WITNESS POST.  
 SET 2 ADDITIONAL IRON PIPES AS SHOWN BELOW.  
 STONE IS +/- 7' EAST OF THE WEST EDGE OF THE TRAVELED PORTION OF BRIDGE ROAD

(c) (d) (e) Plan view of corner with ties to at least 4 witness monuments. If in disagreement with previously established corner, show the distances between the two corners and also indicate the ties to the disputed corner.

RECEIVED AT LINCOLN COUNTY  
 COURTHOUSE THIS 25th DAY  
 OF Nov. 19 98  
 (at Lisle)  
 LAND INFORMATION OFFICE



(i) I, DAVID LEMKE S-1845  
 (type or print name) certify that the corner location on this record was determined by me or under my direction and control and that this U.S. Public Land Survey Monument Record is correct and complete to the best of my knowledge and belief.

Signature [Signature] Date 11/24/98