

# U.S. PUBLIC LAND SURVEY MONUMENT RECORD

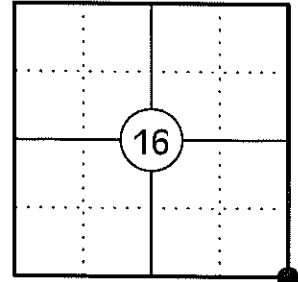
NOTE: THIS FORM IS INTENDED AND DESIGNED TO FULFILL ALL REQUIREMENTS OF WISCONSIN ADMINISTRATIVE CODE CHAPTER A-E 7.08 U.S. PUBLIC LAND SURVEY MONUMENT RECORD (3) (a)(b)(c)(d)(e)(f)(g)(h)(i). AN ADDITIONAL SHEET MAY BE ADDED IF NECESSARY TO CONFIRM WITH SAID REQUIREMENTS.

**(a) CORNER LOCATION:**

**LINCOLN COUNTY COORDINATES:**

SOUTHEAST CORNER OF SECTION 16  
 TOWNSHIP 34 NORTH  
 RANGE 4 EAST  
 TOWN OF TOMAHAWK  
 COUNTY OF LINCOLN

N: 211325.85  
 E: 317694.49



**(b) HISTORY OF ORIGINAL CORNER:**

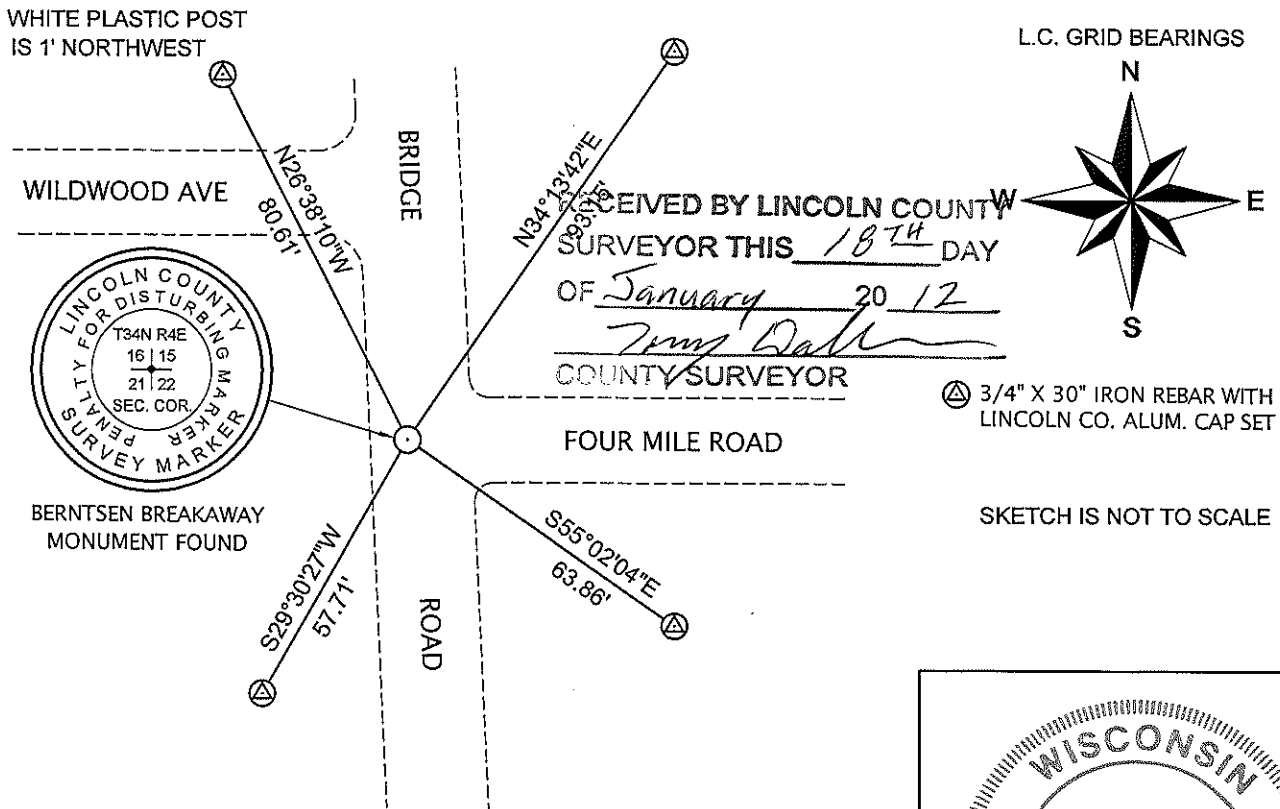
ORIGINAL SURVEYOR: EDWARD D. PALMER  
 DATE OF SURVEY: APRIL 1865

ORIGINAL BEARING TREES: 14" BIRCH - N50°W, 17 LKS  
 9" HEMLOCK - N42°E, 15 LKS  
 7" HEMLOCK - S70°E, 22 LKS  
 5" HEMLOCK - S80°W, 7 LKS

**(f)(g)(h) DESCRIPTION OF MONUMENT FOUND AT THIS CORNER AND IF IT WAS ACCEPTED STATE ALL EVIDENCE (MATERIAL, TESTIMONIAL, OCCUPATIONAL, PLATS, RECORDS, OTHER MONUMENTS) USED AS A BASIS FOR ESTABLISHING LOCATION. IF REESTABLISHING THROUGH LOST CORNER PROPORTIONATE METHODS, INDICATE ALL MONUMENTS, DISTANCES, AND DIRECTIONS USED TO ESTABLISH. INDICATE TYPE OF MONUMENT AND SIGN POST FOUND OR SET.**

- 1865: EDWARD D. PALMER SET THE ORIGINAL SECTION CORNER POST.
- 02/03/1973: JOSEPH KIRBY OF GENISOT AND ASSOCIATES, INC SHOWS THE CORNER MARKED BY AN IRON MARKER WITH TWO BEARING TREES AND A WITNESS POST. (LINCOLN CO. MAP L37B)
- 1979: SHERIDAN D. SCHWARK SHOWS THE CORNER AS A GRANITE MONUMENT (L.C. MAP S310A)
- 02/26/1997: LESTER SCHMIT SHOWS THE CORNER AS A BERNTSEN MONUMENT SET (L.C. MAP L216A)
- 01/13/2012: I FOUND A LINCOLN COUNTY BERNTSEN MONUMENT 4' WEST OF THE CENTERLINE OF BRIDGE ROAD 1.5' BELOW GRADE. I ACCEPTED THE MONUMENT AS THE CORNER AND SET FOUR 3/4" DIA. IRON REBAR WITH ALUMINUM CAPS TO WITNESS THE CORNER.

**(c)(d)(e) PLAN VIEW OF CORNER WITH TIES TO AT LEAST FOUR WITNESSES. IF IN DISAGREEMENT WITH PREVIOUSLY ESTABLISHED CORNER, SHOW THE DISTANCES BETWEEN THE TWO CORNERS AND ALSO INDICATE THE TIE TO THE DISPUTED CORNER.**



RECEIVED BY LINCOLN COUNTY SURVEYOR THIS 18<sup>TH</sup> DAY OF January 20 12  
*Gregory S. Maines*  
 COUNTY SURVEYOR

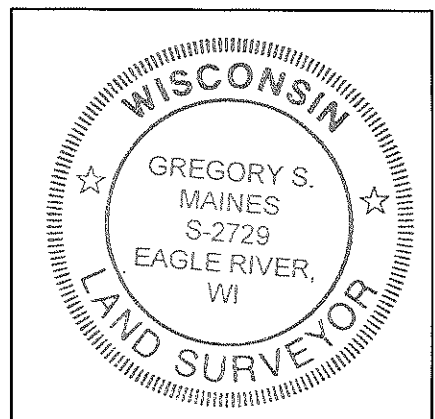
⊠ 3/4" X 30" IRON REBAR WITH LINCOLN CO. ALUM. CAP SET

SKETCH IS NOT TO SCALE

**CERTIFICATION**

I GREGORY S. MAINES, REGISTERED LAND SURVEYOR NO. 2729, HEREBY CERTIFY THAT THE CORNER LOCATION ON THIS RECORD WAS REFERENCED BY ME OR UNDER MY DIRECTION AND CONTROL AND THAT THIS U.S. PUBLIC LAND SURVEY MONUMENT RECORD IS COMPLETE TO THE BEST OF MY KNOWLEDGE AND BELIEF.

*Gregory S. Maines* 1/13/12  
 SIGNATURE



INDEX NO. M-13

**SOUTHEAST CORNER - SECTION 16, T 34 N, R 4 E**

OVERVIEW



MONUMENT



FACING NORTH



**SOUTHEAST CORNER - SECTION 16, T 34 N, R 4 E**

FACING EAST



FACING SOUTH



FACING WEST

