

U.S. PUBLIC LAND SURVEY MONUMENT RECORD

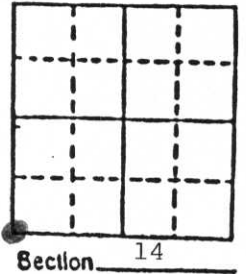
Note: This form is intended and designed to fulfill all requirements of Wisconsin Administrative Code, Chapter A-E 5.02, U.S. Public Land Survey Monument Record (3) (a) (b) (c) (d) (e) (f) (g) (h) (i). An additional sheet may be added if necessary to conform with said requirements.

(a) Corner location: Township 34 North

Range 4 East

Town Tomahawk

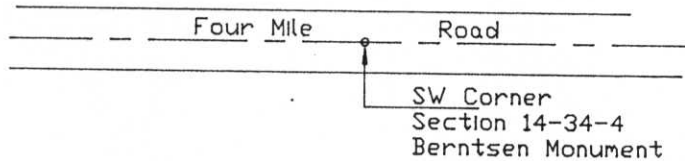
County Lincoln



b) (f) (g) (h) Description of monument found at this corner and if it was accepted, state all evidence (material, testimonial, occupational, plats, records, other monuments) used as a basis for accepting. If not accepted or if nothing was found, state evidence used as basis for establishing location. If reestablished through lost corner proportionate methods, indicate all monuments, distances and directions used to establish.

Found 5" x 5" Granite monument in centerline of Four Mile Road. Monument was at the surface and being struck by road grader. Top 10" of the monument had already been broken off and was lying next to a green and white witness post on the north edge of the road. This monument had been used in a survey by Genisot Engineering (see Map #3914-10) in 1973. Bearing trees from that survey could not be found but the tie to the green and white post checked. Replaced granite monument with Berntsen monument (6" below road surface) on July 5, 1990.

c) (d) (e) Plan view of corner with ties to at least 4 witness monuments. If in disagreement with previously established corner, show the distances between the two corners and also indicate the ties to the disputed corner.



Witness Monuments (Magnetic Bearings)

- White Post w/green top N06°E 30.2'
- Roofing Nails in
- 8.1' Maple S70°W 129.4'
- 7.2' Maple S05°W 92.9'
- 5.7' Aspen N40°W 36.78'

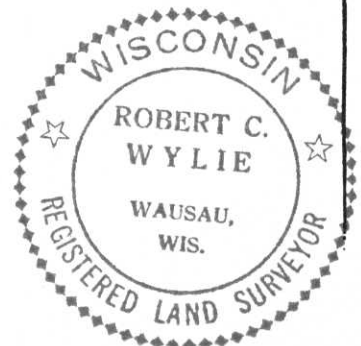
(i) I, Robert C. Wylie, RLS-66
(type or print name) certify that the corner location on this record was determined by me or under my direction and control and that this U.S. Public Land Survey Monument Record is correct and complete to the best of my knowledge and belief.

Signature

Robert C. Wylie

Date

Aug 2, 1990



Index No. M-12