

U.S. PUBLIC LAND SURVEY MONUMENT RECORD

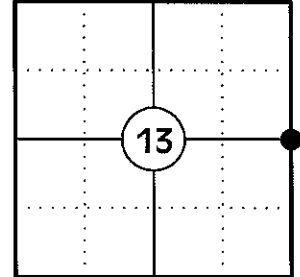
NOTE: THIS FORM IS INTENDED AND DESIGNED TO FULFILL ALL REQUIREMENTS OF WISCONSIN ADMINISTRATIVE CODE CHAPTER A-E 7.08 U.S. PUBLIC LAND SURVEY MONUMENT RECORD (3) (a)(b)(c)(d)(e)(f)(g)(h)(i). AN ADDITIONAL SHEET MAY BE ADDED IF NECESSARY TO CONFIRM WITH SAID REQUIREMENTS.

(a) CORNER LOCATION:

EAST 1/4 CORNER OF SECTION 13
TOWNSHIP 34 NORTH
RANGE 4 EAST
TOWN OF TOMAHAWK
COUNTY OF LINCOLN

LINCOLN COUNTY COORDINATES:

N: 214404.70
E: 333460.18



(b) HISTORY OF ORIGINAL CORNER:

ORIGINAL SURVEYOR: JAMES M. MARSH
DATE OF SURVEY: AUG. 1851

ORIGINAL BEARING TREES: 8" HEMLOCK - S75°E, 37 LKS
8" HEMLOCK - S78°W, 22 LKS
12" HEMLOCK - N86°W, 10 LKS
12" ELM - N66°E, 46 LKS

(f)(g)(h) DESCRIPTION OF MONUMENT FOUND AT THIS CORNER AND IF IT WAS ACCEPTED STATE ALL EVIDENCE (MATERIAL, TESTIMONIAL, OCCUPATIONAL, PLATS, RECORDS, OTHER MONUMENTS) USED AS A BASIS FOR ESTABLISHING LOCATION. IF REESTABLISHING THROUGH LOST CORNER PROPORTIONATE METHODS, INDICATE ALL MONUMENTS, DISTANCES, AND DIRECTIONS USED TO ESTABLISH. INDICATE TYPE OF MONUMENT AND SIGN POST FOUND OR SET.

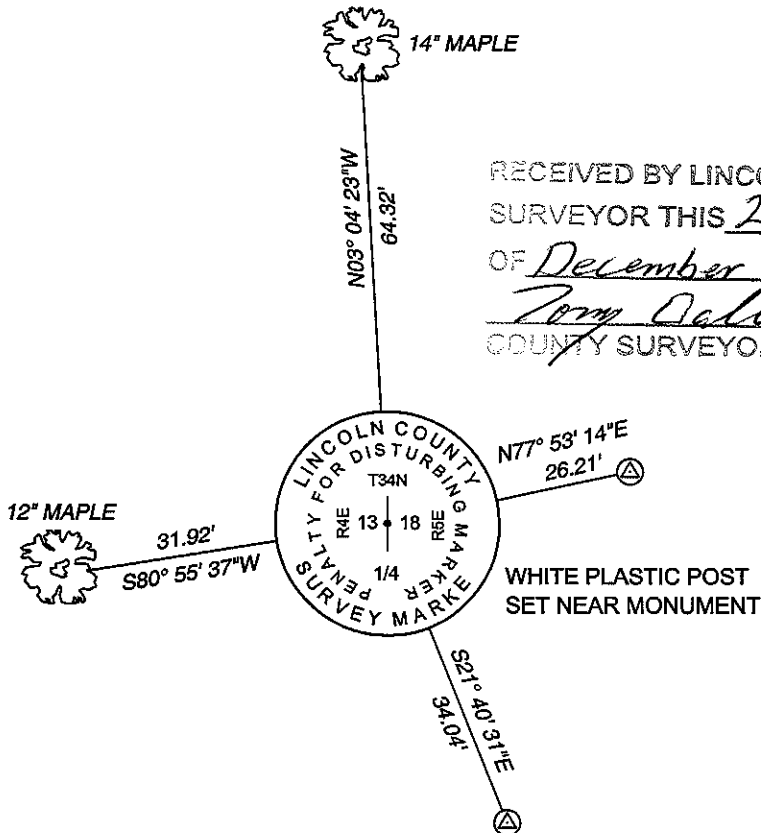
1851: JAMES M. MARSH SET THE ORIGINAL 1/4 CORNER POST.

04/30/1990: ROBERT WYLIE, RLS 66 SHOWS THE CORNER COMPUTED MIDWAY AND ONLINE BETWEEN THE NE AND SE CORNERS OF SECTION 13 AND SET MULTIPLE 1/16 CORNERS SET USING THIS LOCATION.

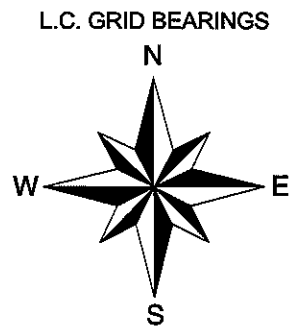
12/20/2004: DAVID GOSLIN, RLS 2280 SHOWS A LINCOLN COUNTY BERNTSEN MONUMENT SET MIDWAY AND ONLINE BETWEEN THE NE AND SE CORNERS OF SECTION 13. (LC MAP NO. L387A)

12/19/2012: I DID NOT FIND THE BERNTSEN MONUMENT THAT GOSLIN SHOWS. I POSITIONED THE CORNER BY SINGLE PROPORTION USING THE NE AND SE CORNERS OF SECTION 13. I SET A LINCOLN COUNTY BERNTSEN MONUMENT AND MADE TWO BEARING TREES AND SET TWO REFERENCE MONUMENTS TO WITNESS THE CORNER.

(c)(d)(e) PLAN VIEW OF CORNER WITH TIES TO AT LEAST FOUR WITNESSES. IF IN DISAGREEMENT WITH PREVIOUSLY ESTABLISHED CORNER, SHOW THE DISTANCES BETWEEN THE TWO CORNERS AND ALSO INDICATE THE TIE TO THE DISPUTED CORNER.

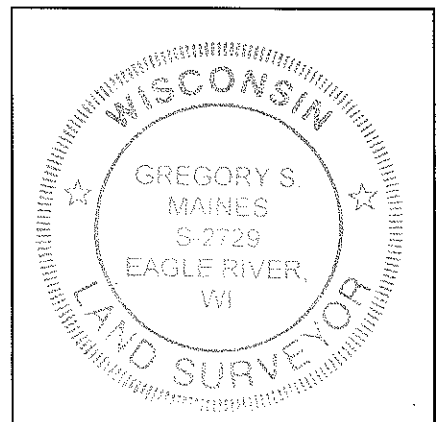


RECEIVED BY LINCOLN COUNTY SURVEYOR THIS 21ST DAY OF December 20 12
Tony O'Brien
COUNTY SURVEYOR



ⓐ 3/4" X 30" IRON REBAR WITH LINCOLN CO. ALUM. CAP SET

SKETCH IS NOT TO SCALE
DISTANCES TO BT'S ARE TO NAIL IN SIDE



INDEX NO. K-25

CERTIFICATION

I GREGORY S. MAINES, REGISTERED LAND SURVEYOR NO. 2729, HEREBY CERTIFY THAT THE CORNER LOCATION ON THIS RECORD WAS REFERENCED BY ME OR UNDER MY DIRECTION AND CONTROL AND THAT THIS U.S. PUBLIC LAND SURVEY MONUMENT RECORD IS COMPLETE TO THE BEST OF MY KNOWLEDGE AND BELIEF.

Gregory S. Maines
SIGNATURE