

U.S. PUBLIC LAND SURVEY MONUMENT RECORD

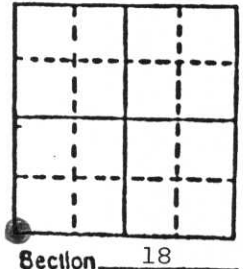
Note: This form is intended and designed to fulfill all requirements of Wisconsin Administrative Code, Chapter A-E 5.02, U.S. Public Land Survey Monument Record (3) (a) (b) (c) (d) (e) (f) (g) (h) (i). An additional sheet may be added if necessary to conform with said requirements.

(a) Corner location: Township 34 North

Range 5 East

Town Tomahawk

County Lincoln

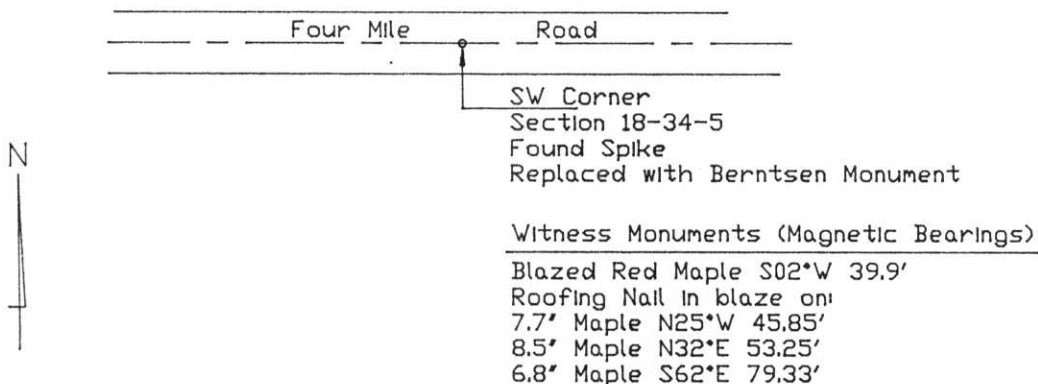


Section 18

b) (f) (g) (h) Description of monument found at this corner and if it was accepted, state all evidence (material, testimonial, occupational, plats, records, other monuments) used as a basis for accepting. If not accepted or if nothing was found, state evidence used as basis for establishing location. If reestablished through lost corner proportionate methods, indicate all monuments, distances and directions used to establish.

Found a spike at this location (centerline of Four Mile Road) per directions from Wm. Stuth, Surveyor, and found a blazed red maple tree (blaze painted blue) S 02° W 39.9' per his directions. Tree also had an American Can Co. location shingle nailed to it. This corner was included in an extensive survey I conducted in the adjacent sections and was utilized in establishing additional corners to the east and west and subdividing sections 13-34-4 and 18-34-5. Replaced spike with Berntsen monument (6" below road surface) on July 5, 1990.

c) (d) (e) Plan view of corner with ties to at least 4 witness monuments. If in disagreement with previously established corner, show the distances between the two corners and also indicate the ties to the disputed corner.



(i) I, Robert C. Wylie, RLS-66
(Type or print name) certify that the corner location on this record was determined by me or under my direction and control and that this U.S. Public Land Survey Monument Record is correct and complete to the best of my knowledge and belief.

Signature

Date

Robert C. Wylie Aug 2, 1990



Index No W-1