

# U.S. PUBLIC LAND SURVEY MONUMENT RECORD

NOTE: This form is intended and designed to fulfill all requirements of Wisconsin Administrative Code, Chapter A-E 7.08 U.S. Public Land Survey Monument Record (3)(a)(b)(c)(d)(e)(f)(g)(h)(i). An additional sheet may be added if necessary to conform with said requirements.

(a) Corner location: Township 34 North

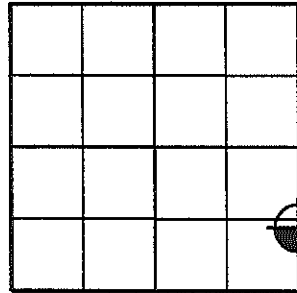
Range 4 East

Town of TOMAHAWK

County of LINCOLN

Proj. 593

M.C.—North side of Flowage



Section 12



Lincoln County N 217906.167  
Coordinates E 333459.808

(b)(f)(g)(h) Description of monument found at this corner and if it was accepted, state all evidence (material, testimonial, occupation, plats, records, other monuments) used as a basis for accepting. If not accepted or if nothing was found, state evidence used as a basis for establishing location. If reestablished through lost corner proportionate methods, indicate all monuments, distances and directions used to establish. Indicate type of monument found or set and sign post.

**August 1851** – James M. Marsh set meander post on left bank 7.88 chains north of Southwest corner of Section. BT's: White Ash 8" N70°W, 6 lks; White Ash 6" N76°E, 46 lks.

**October 21, 1988** – R. C. Wylie set 1-1/2" O.D. iron pipe. BT's: 12.0" Sugar Maple S02°E, 38.26'; 6.4" Sugar Maple S60°W 32.97'; See Plat of Survey dated August 1990, Lincoln County Land Information Office Map Number S110-D

**January 31, 2005** – Matthew E. Hoglund, subcontractor for the Plat of Survey by Stephen J. Favorite dated January 25, 2005, Lincoln County Land Information Office Map Number L396B. We found a 1-1/2" iron pipe 0.55' East of Range Line. We set a Lincoln County Berntsen Monument on the Range Line 0.55' West of the found 1-1/2" iron pipe position. We set reference monuments as shown below.

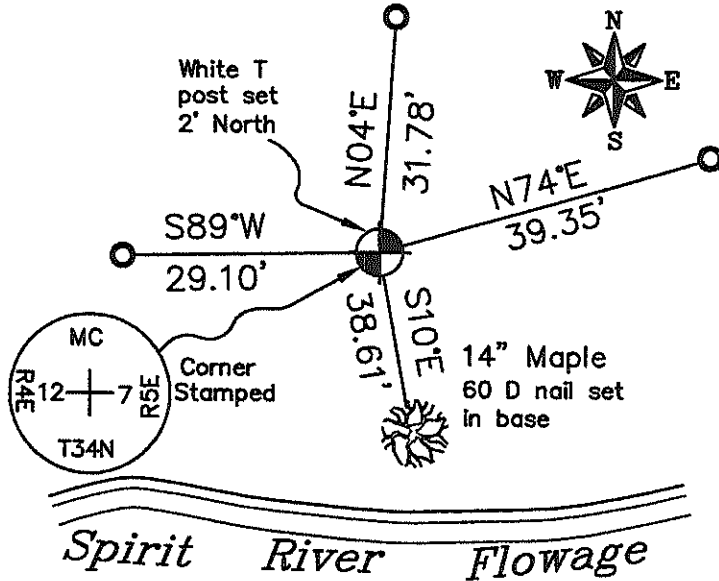
(c)(d)(e) Plan view of corner with ties to at least 4 witness monuments. If in disagreement with previously established corner, show the distances between the two corners and also indicate the ties to the disputed corner.

### Legend

- 7/8" x 30" IRON REBAR WITH ALUMINUM CAP SET
- LINCOLN COUNTY BERNTSEN MONUMENT SET

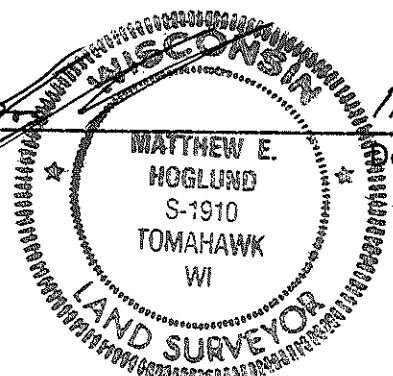
### Notes:

1. The drawing is NOT to scale.
2. All bearings are taken with a compass.



(1) I, Matthew E. Hoglund, certify that the corner location on this record was determined by me under my direction and control and that this U.S. Public Land Survey Monument is correct and complete to the best of my knowledge and belief.

Matthew E. Hoglund  
Signature Date 11/3/2008



RECEIVED BY LINCOLN COUNTY SURVEYOR THIS 4th DAY OF November 20 08  
Tommy Dahr  
COUNTY SURVEYOR

HI-25