

# U.S. PUBLIC LAND SURVEY MONUMENT RECORD

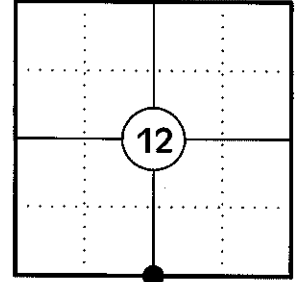
NOTE: THIS FORM IS INTENDED AND DESIGNED TO FULFILL ALL REQUIREMENTS OF WISCONSIN ADMINISTRATIVE CODE CHAPTER A-E 7.08 U.S. PUBLIC LAND SURVEY MONUMENT RECORD (3) (a)(b)(c)(d)(e)(f)(g)(h)(i). AN ADDITIONAL SHEET MAY BE ADDED IF NECESSARY TO CONFIRM WITH SAID REQUIREMENTS.

**(a) CORNER LOCATION:**

SOUTH 1/4 CORNER OF SECTION 12  
 TOWNSHIP 34 NORTH  
 RANGE 4 EAST  
 TOWN OF TOMAHAWK  
 COUNTY OF LINCOLN

**LINCOLN COUNTY COORDINATES:**

N: 217083.11  
 E: 330828.08



**(b) HISTORY OF ORIGINAL CORNER:**

ORIGINAL SURVEYOR: EDWARD D. PALMER  
 DATE OF SURVEY: APRIL 1865

ORIGINAL BEARING TREES: 9" FIR - S71°W, 20 LKS  
 10" WHITE ELM - N55°E, 30 LKS

**(f)(g)(h) DESCRIPTION OF MONUMENT FOUND AT THIS CORNER AND IF IT WAS ACCEPTED STATE ALL EVIDENCE (MATERIAL, TESTIMONIAL, OCCUPATIONAL, PLATS, RECORDS, OTHER MONUMENTS) USED AS A BASIS FOR ESTABLISHING LOCATION. IF REESTABLISHING THROUGH LOST CORNER PROPORTIONATE METHODS, INDICATE ALL MONUMENTS, DISTANCES, AND DIRECTIONS USED TO ESTABLISH. INDICATE TYPE OF MONUMENT AND SIGN POST FOUND OR SET.**

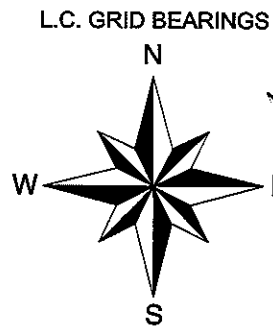
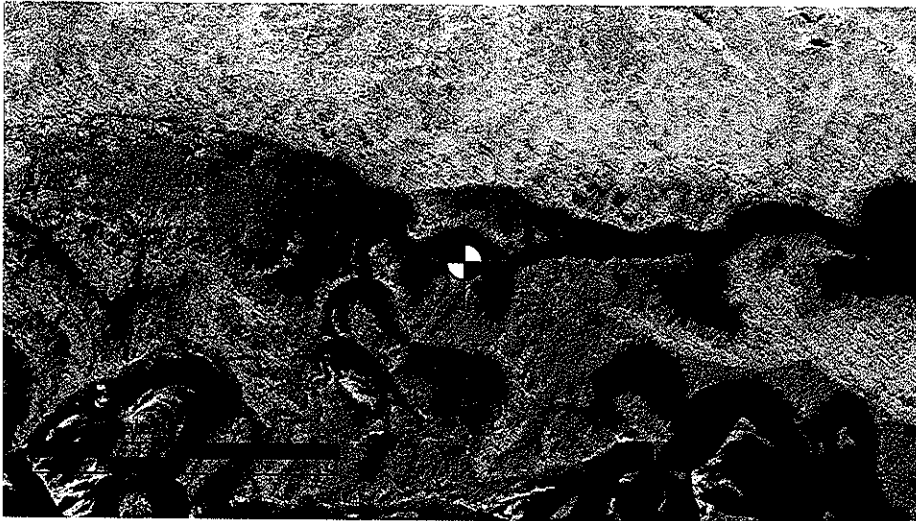
1865: EDWARD D. PALMER SET THE ORIGINAL 1/4 CORNER POST.

04/30/1990: ROBERT WYLIE, RLS 66 SHOWS THE CORNER COMPUTED MIDWAY AND ONLINE BETWEEN THE SW AND SE CORNERS OF SECTION 12 AND SET MULTIPLE 1/16 CORNERS SET USING THIS LOCATION. CORNER FALLS IN FLOWAGE.

01/25/2005: STEVE FAVORITE SHOWS THE CORNER COMPUTED MIDWAY AND ONLINE BETWEEN THE SW AND SE CORNERS OF SECTION 12 AND NOTES THAT THE CORNER FALLS IN FLOWAGE. (L.C. MAP L396B)

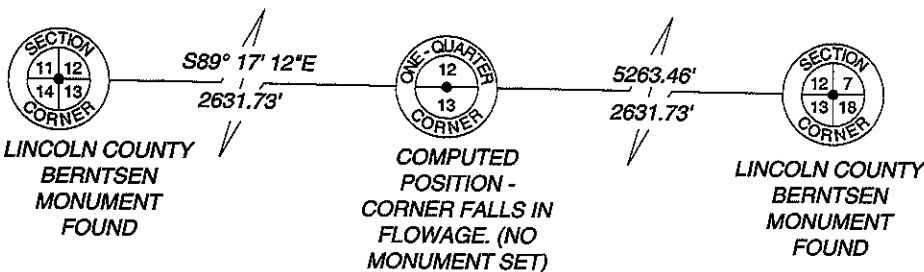
12/19/2012: I POSITIONED THE CORNER BY SINGLE PROPORTION USING THE SW CORNER OF SECTION 12 AND THE SE CORNER OF SECTION 12. CORNER FALLS IN FLOWAGE AND CAN NOT BE MONUMENTED.

**(c)(d)(e) PLAN VIEW OF CORNER WITH TIES TO AT LEAST FOUR WITNESSES. IF IN DISAGREEMENT WITH PREVIOUSLY ESTABLISHED CORNER, SHOW THE DISTANCES BETWEEN THE TWO CORNERS AND ALSO INDICATE THE TIE TO THE DISPUTED CORNER.**



RECEIVED BY LINCOLN COUNTY SURVEYOR THIS 21<sup>ST</sup> DAY OF December 20 12  
*Gregory S. Maines*  
 COUNTY SURVEYOR

Ⓐ 3/4" X 30" IRON REBAR WITH LINCOLN CO. ALUM. CAP SET

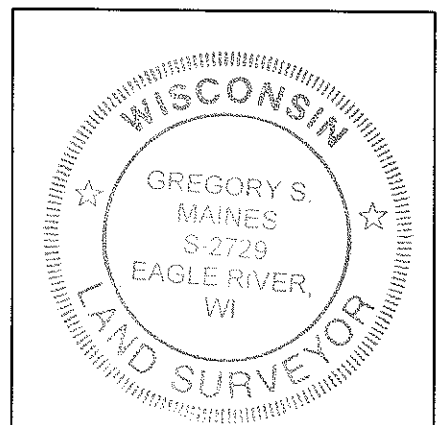


SKETCH IS NOT TO SCALE  
 DISTANCES TO BT'S ARE TO NAIL IN SIDE

**CERTIFICATION**

I GREGORY S. MAINES, REGISTERED LAND SURVEYOR NO. 2729, HEREBY CERTIFY THAT THE CORNER LOCATION ON THIS RECORD WAS REFERENCED BY ME OR UNDER MY DIRECTION AND CONTROL AND THAT THIS U.S. PUBLIC LAND SURVEY MONUMENT RECORD IS COMPLETE TO THE BEST OF MY KNOWLEDGE AND BELIEF.

*Gregory S. Maines*  
 SIGNATURE



INDEX NO. I-23