

U.S. PUBLIC LAND SURVEY MONUMENT RECORD

NOTE: THIS FORM IS INTENDED AND DESIGNED TO FULFILL ALL REQUIREMENTS OF WISCONSIN ADMINISTRATIVE CODE, CHAPTER A-E 7.08, U.S. PUBLIC LAND SURVEY MONUMENT RECORD (3)(a)(b)(c)(d)(e)(f)(g)(h)(i). ADDITIONAL SHEETS MAY BE NECESSARY TO CONFORM TO SAID REQUIREMENTS.

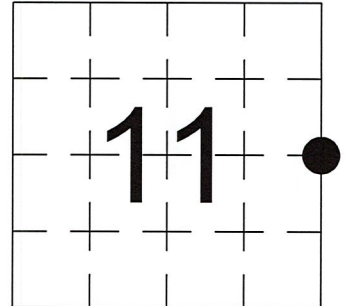
T 34 N, R 4 E

(a) CORNER LOCATION:

EAST 1/4 CORNER, SECTION 11
 TOWNSHIP 34 NORTH
 RANGE 4 EAST
 TOWN OF TOMAHAWK
 LINCOLN COUNTY
 WISCONSIN

(b) HISTORY OF ORIGINAL CORNER:

ORIGINAL SURVEYOR: See Previous Tie Sheet
 COMMENCING DATE:
 COMPLETION DATE:
 ORIGINAL BEARING TREES:



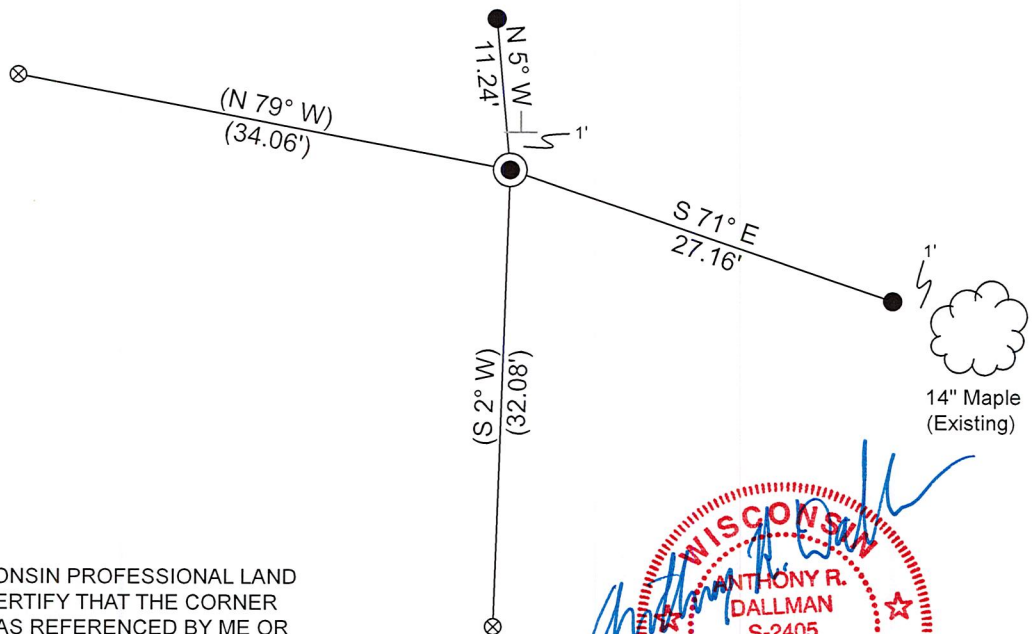
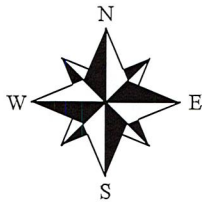
(f)(g)(h) DESCRIPTION OF MONUMENT FOUND AT THIS CORNER AND IF IT WAS ACCEPTED. STATE ALL EVIDENCE (MATERIAL, TESTIMONIAL, OCCUPATIONAL, PLATS, RECORDS, OTHER MONUMENTS) USED AS A BASIS FOR ESTABLISHING LOCATION. IF RE-ESTABLISHING THROUGH LOST CORNER PROPORTIONATE METHODS, INDICATE ALL MONUMENTS, DISTANCES, AND DIRECTIONS USED TO ESTABLISH. INDICATE TYPE OF MONUMENTS FOUND OR SET.

1/31/2005, Matthew Høglund, set a Berntsen Monument.

12/14/2023, I, Anthony R. Dallman, PLS-2405, found a Berntsen Monument, up 2", and all 4 witnesses. I accepted this location and set witness monuments, as shown in the sketch below, to further perpetuate the corner location.

(c)(d)(e) PLAN VIEW OF THE CORNER WITH TIES TO AT LEAST FOUR WITNESSES. IF IN DISAGREEMENT WITH PREVIOUSLY ESTABLISHED CORNER, SHOW THE DISTANCES BETWEEN THE TWO CORNERS AND ALSO THE TIES TO THE DISPUTED CORNER.

- Tie bearings by hand-held compass.
- Tie distances by steel tape.
- Not to scale.



- ⊗ - Existing 7/8" Capped Rebar
- - Set 3/4" Capped Rebar
- ⊥ - Vinyl Post

I, ANTHONY R. DALLMAN, WISCONSIN PROFESSIONAL LAND SURVEYOR, S-2405, HEREBY CERTIFY THAT THE CORNER LOCATION ON THIS RECORD WAS REFERENCED BY ME OR UNDER MY DIRECTION AND CONTROL AND THAT THIS U.S. PUBLIC LAND SURVEY MONUMENT RECORD IS COMPLETE TO THE BEST OF MY KNOWLEDGE AND BELIEF.

Anthony R. Dallman 02/16/24
 ANTHONY R. DALLMAN, PLS S-2405



INDEX NO. G-21

43404112000_Mon-N



43404112000_North

PLEASE
DO NOT
DISTURB
NEARBY

**S
M
U
R
V
E
E
Y
R**

IF THE
LOCATION
OF THE NEARBY
MARKER IS
ENGINEERED
PLEASE CONTACT
THE COUNTY
SURVEYORS
OFFICE



43404112000_West



43404112000_South



43404112000_East



U.S. PUBLIC LAND SURVEY MONUMENT RECORD

NOTE: This form is intended and designed to fulfill all requirements of Wisconsin Administrative Code, Chapter A-E 7 .08 U.S. Public Land Survey Monument Record (3)(a)(b)(c)(d)(e)(f)(g)(h)(i). An additional sheet may be added if necessary to conform with said requirements.

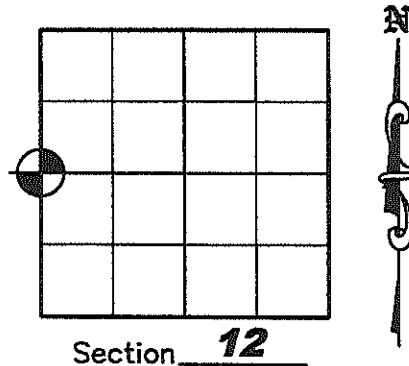
(a) Corner location: Township 34 North
 Range 4 East

Town of TOMAHAWK

County of LINCOLN

Proj. 593

Lincoln County N 219758.466
 Coordinates E 328167.285



(b)(f)(g)(h) Description of monument found at this corner and if it was accepted, state all evidence (material, testimonial, occupation, plats, records, other monuments) used as a basis for accepting. If not accepted or if nothing was found, state evidence used as a basis for establishing location. If reestablished through lost corner proportionate methods, indicate all monuments, distances and directions used to establish. Indicate type of monument found or set and sign post.

April, 1865 – Edward D. Palmer set 1/4 post; BT's: Hemlock 6" S40°W, 12lks; Hemlock 12" N55°E, 17lks.

August, 1989 – R. C. Wylie shows a calculated position per Plat of Survey dated August 1990, Lincoln County Land Information Office Map Number S110-D.

January 31, 2005 – Matthew E. Hoglund, subcontractor for the Plat of Survey by Stephen J. Favorite dated January 25, 2005, Lincoln County Land Information Office Map Number L396B. No monument was found at this location. We calculated this corner by extending a line from the E 1/4 corner of Section 12 through the Center of Section 12 and intersected it with a line from the SW corner of Section 12 and the NW corner of Section 12. This location matched Wylie's map position within 0.5'±. When staking, we found a 60d nail at the corner and replaced it with a set Lincoln County Berntsen Monument and witnessed the corner as shown below.

(c)(d)(e) Plan view of corner with ties to at least 4 witness monuments. If in disagreement with previously established corner, show the distances between the two corners and also indicate the ties to the disputed corner.

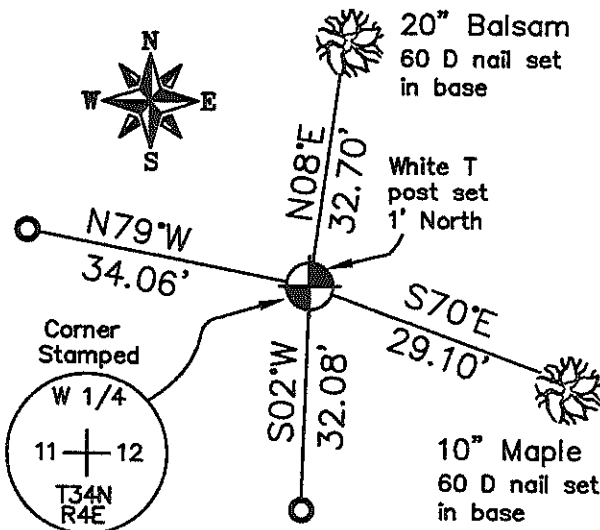
Legend

○ 7/8" x 30" IRON REBAR WITH ALUMINUM CAP SET

⊙ LINCOLN CO. ALUMINUM BERNTSEN MONUMENT SET

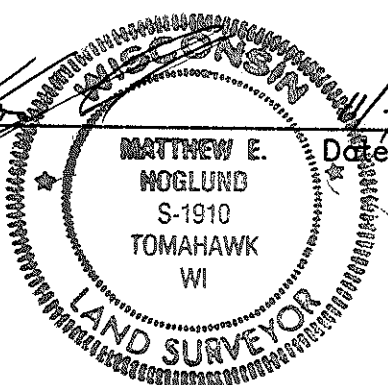
Notes:

1. The drawing is NOT to scale.
2. All bearings are taken with a compass.



(i) I, Matthew E. Hoglund, certify that the corner location on this record was determined by me under my direction and control and that this U.S. Public Land Survey Monument is correct and complete to the best of my knowledge and belief.

Matthew E. Hoglund
 Signature Date 11/3/2008



RECEIVED BY LINCOLN COUNTY
 SURVEYOR THIS 4TH DAY
 OF November 20 08
Tommy Dull
 COUNTY SURVEYOR