

# U.S. PUBLIC LAND SURVEY MONUMENT RECORD

NOTE: This form is intended and designed to fulfill all requirements of Wisconsin Administrative Code, Chapter A-E 7 .08 U.S. Public Land Survey Monument Record (3)(a)(b)(c)(d)(e)(f)(g)(h)(i). An additional sheet may be added if necessary to conform with said requirements.

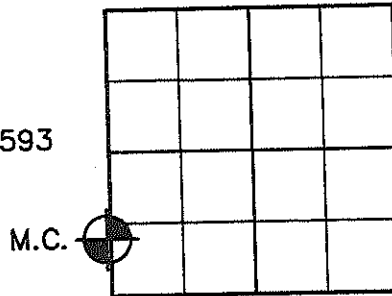
(a) Corner location: Township 34 North  
 Range 4 East

Town of TOMAHAWK

County of LINCOLN

Lincoln County N 217596.746  
 Coordinates E 328191.213

M.C.—North side of Flowage



Section 12

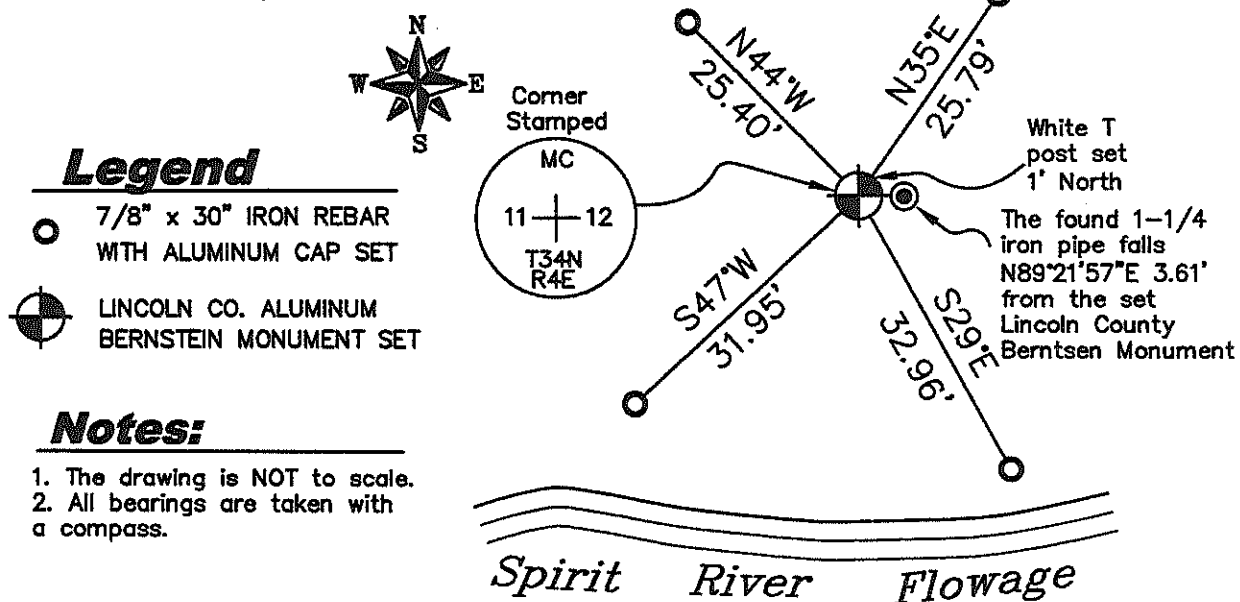


(b)(f)(g)(h) Description of monument found at this corner and if it was accepted, state all evidence (material, testimonial, occupation, plats, records, other monuments) used as a basis for accepting. If not accepted or if nothing was found, state evidence used as a basis for establishing location. If reestablished through lost corner proportionate methods, indicate all monuments, distances and directions used to establish. Indicate type of monument found or set and sign post.

October 27, 1989 — R. C. Wylie set a 1-1/4" iron pipe about 70' North of break in topography that drops to river bottom; clear-cut Aspen sprouts to West; BT's: 12.1" Aspen W13E, 11.25', 12.5" Aspen S45E, 13.99'; See Plat of Survey dated August 1990, Lincoln County Land Information Office Map Number S110-D.

January 31, 2005 — Matthew E. Hoglund, subcontractor for the Plat of Survey by Stephen J. Favorite dated January 25, 2005, Lincoln County Land Information Office Map Number L396B. We found a 1-1/4" iron pipe that fell N89°21'57"E, 3.61' from the Section line. We set a Lincoln County Bernsten Monument on the Section line and witnessed the corner as shown below.

(c)(d)(e) Plan view of corner with ties to at least 4 witness monuments. If in disagreement with previously established corner, show the distances between the two corners and also indicate the ties to the disputed corner.



### Legend

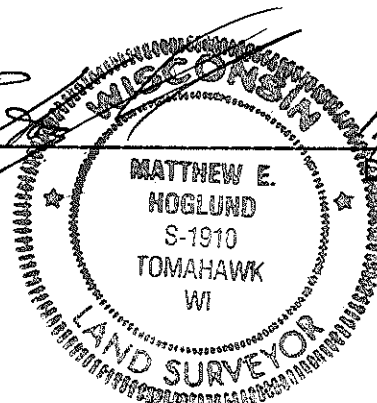
- 7/8" x 30" IRON REBAR WITH ALUMINUM CAP SET
- LINCOLN CO. ALUMINUM BERNSTEIN MONUMENT SET

### Notes:

1. The drawing is NOT to scale.
2. All bearings are taken with a compass.

(i) I, Matthew E. Hoglund, certify that the corner location on this record was determined by me under my direction and control and that this U.S. Public Land Survey Monument is correct and complete to the best of my knowledge and belief.

\_\_\_\_\_  
 Signature Date 11/3/2008



RECEIVED BY LINCOLN COUNTY SURVEYOR THIS 4<sup>TH</sup> DAY OF November 20 08  
Tony Dahl  
 COUNTY SURVEYOR

H/I-21