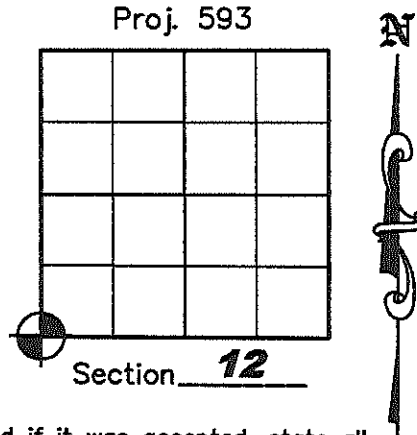


# U.S. PUBLIC LAND SURVEY MONUMENT RECORD

NOTE: This form is intended and designed to fulfill all requirements of Wisconsin Administrative Code, Chapter A-E 7.08 U.S. Public Land Survey Monument Record (3)(a)(b)(c)(d)(e)(f)(g)(h)(i). An additional sheet may be added if necessary to conform with said requirements.

(a) Corner location: Township 34 North  
 Range 4 East  
 Town of TOMAHAWK  
 County of LINCOLN

Lincoln County N 217115.872  
 Coordinates E 328196.536



(b)(f)(g)(h) Description of monument found at this corner and if it was accepted, state all evidence (material, testimonial, occupation, plats, records, other monuments) used as a basis for accepting. If not accepted or if nothing was found, state evidence used as a basis for establishing location. If reestablished through lost corner proportionate methods, indicate all monuments, distances and directions used to establish. Indicate type of monument found or set and sign post.




April 1865 - Edward D. Palmer set corner post: BT's: 7" Tamarack N50°W, 8 links; 5" Tamarack N34°E, 20 links; 8" Tamarack S40°E, 21 links, 6" Tamarack S10°W, 11 links.

April 18, 1990 - R. C. Wylie visited corner and found no evidence. He set 1-1/2" iron pipe in wet-marshy swamp. No bearing trees are within useful distance; See Plat of Survey dated August 1990, Lincoln County Land Information Office Map Number S110-D.

January 31, 2005 - Matthew E. Høglund, subcontractor for the Plat of Survey by Stephen J. Favorite dated January 25, 2005, Lincoln County Land Information Office Map Number L396B. We found a 1-1/2" iron pipe per Wylie, but the corner didn't match his Plat of Survey of record. We contacted him and he said the monument position was correct and that he had not revised the bearings and distances to this corner when his Plat of Survey was revised in August of 1990. We accepted the found 1-1/2" iron pipe and replaced it with a 1-1/4" aluminum monument, 6" in length, with a 2-1/2" cap. We set witness corners as shown below.

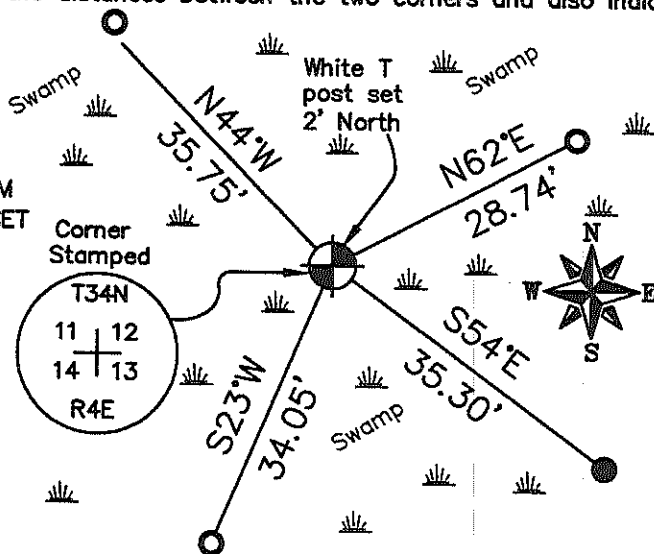
(c)(d)(e) Plan view of corner with ties to at least 4 witness monuments. If in disagreement with previously established corner, show the distances between the two corners and also indicate the ties to the disputed corner.

### Legend

-  7/8" x 30" IRON REBAR WITH ALUMINUM CAP SET
-  1-1/4" LINCOLN CO. ALUMINUM MONUMENT W/ 2-1/2" CAP SET
-  1-1/4" IRON PIPE SET

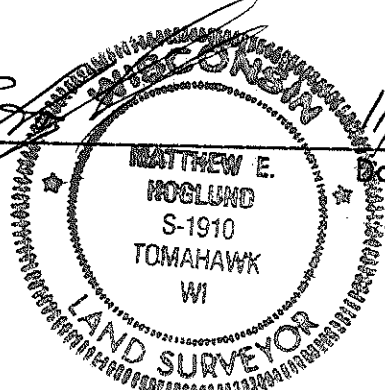
### Notes:

1. The drawing is NOT to scale.
2. All bearings are taken with a compass.



(i) I, Matthew E. Høglund, certify that the corner location on this record was determined by me under my direction and control and that this U.S. Public Land Survey Monument is correct and complete to the best of my knowledge and belief.

Matthew E. Høglund  
 Signature Date 11/3/2008



RECEIVED BY LINCOLN COUNTY  
 SURVEYOR THIS 4TH DAY  
 OF November 20 08  
Tom Dahl  
 COUNTY SURVEYOR

T-21













