

U.S. PUBLIC LAND SURVEY MONUMENT RECORD

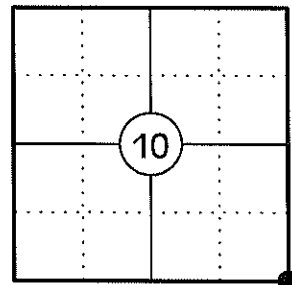
NOTE: THIS FORM IS INTENDED AND DESIGNED TO FULFILL ALL REQUIREMENTS OF WISCONSIN ADMINISTRATIVE CODE CHAPTER A-E 7.08 U.S. PUBLIC LAND SURVEY MONUMENT RECORD (3) (a)(b)(c)(d)(e)(f)(g)(h)(i). AN ADDITIONAL SHEET MAY BE ADDED IF NECESSARY TO CONFIRM WITH SAID REQUIREMENTS.

(a) CORNER LOCATION:

SOUTHEAST CORNER OF SECTION 10
 TOWNSHIP 34 NORTH
 RANGE 4 EAST
 TOWN OF TOMAHAWK
 COUNTY OF LINCOLN

LINCOLN COUNTY COORDINATES:

N: 216774.14
 E: 323009.90



(b) HISTORY OF ORIGINAL CORNER:

ORIGINAL SURVEYOR: EDWARD D. PALMER
 DATE OF SURVEY: APRIL 1865

ORIGINAL BEARING TREES: 3" CEDAR - N20°W, 17 LKS
 12" BIRCH - N70°E, 6 LKS
 10" CEDAR - S67°E, 28 LKS
 6" FIR - S73°W, 10 LKS

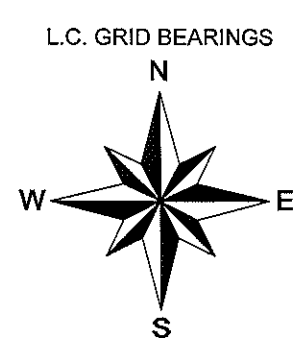
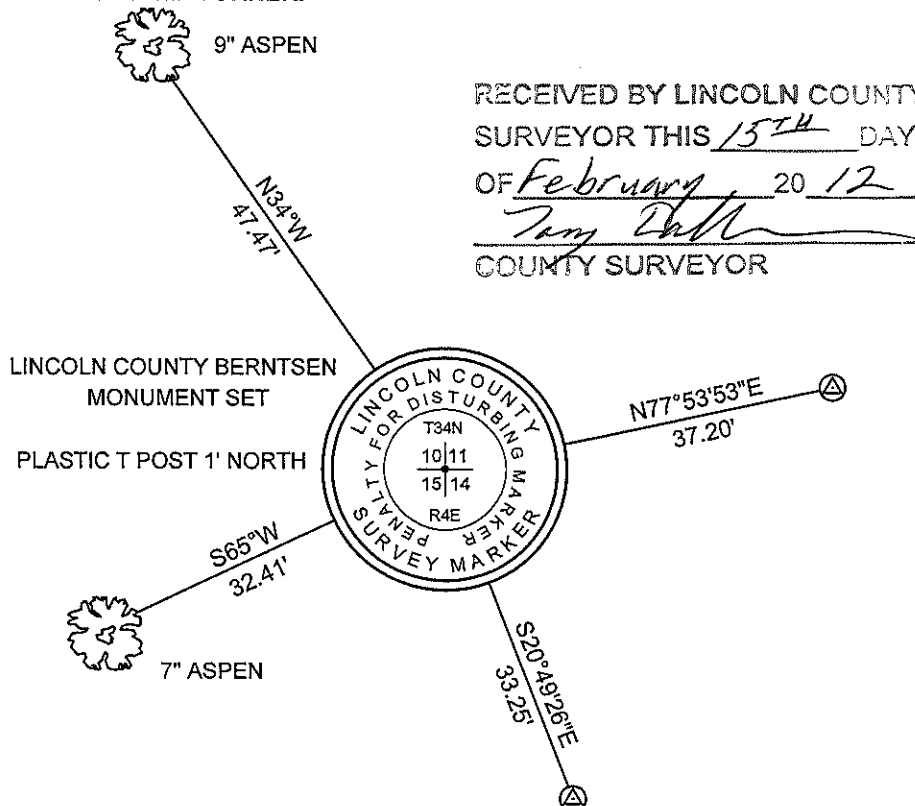
(f)(g)(h) DESCRIPTION OF MONUMENT FOUND AT THIS CORNER AND IF IT WAS ACCEPTED STATE ALL EVIDENCE (MATERIAL, TESTIMONIAL, OCCUPATIONAL, PLATS, RECORDS, OTHER MONUMENTS) USED AS A BASIS FOR ESTABLISHING LOCATION. IF REESTABLISHING THROUGH LOST CORNER PROPORTIONATE METHODS, INDICATE ALL MONUMENTS, DISTANCES, AND DIRECTIONS USED TO ESTABLISH. INDICATE TYPE OF MONUMENT AND SIGN POST FOUND OR SET.

1865: EDWARD D. PALMER SET THE ORIGINAL SECTION CORNER POST.

02/03/1975: GENISOT AND ASSOCIATES, INC SHOWS AN IRON MARKER AT THIS CORNER LOCATION AND SET THE EAST AND SOUTH 1/4 CORNERS OF SECTION 10 BY SINGLE PROPORTION USING THIS CORNER (L.C. MAP B 3914-10).

01/26/2012: I FOUND NO EVIDENCE OF THE IRON MARKER SHOWN ON THE GENISOT SURVEY. TO REESTABLISH THE POSITION OF THE CORNER AS SHOWN ON THE GENISOT SURVEY I DOUBLED OVER THE EAST LINE OF THE NE 1/4 OF SEC. 10 AND THE SOUTH LINE OF THE SW 1/4 OF SECTION 10. THIS RESULTED IN TWO POSITIONS 4.19' APART. I AVERAGED THE TWO POSITIONS AND SET A LINCOLN COUNTY BERNTSEN MONUMENT FOR THE CORNER. I MADE TWO BEARING TREES AND SET TWO 3/4" DIA. IRON REBAR WITH ALUMINUM CAPS TO WITNESS THE CORNER.

(c)(d)(e) PLAN VIEW OF CORNER WITH TIES TO AT LEAST FOUR WITNESSES. IF IN DISAGREEMENT WITH PREVIOUSLY ESTABLISHED CORNER, SHOW THE DISTANCES BETWEEN THE TWO CORNERS AND ALSO INDICATE THE TIE TO THE DISPUTED CORNER.



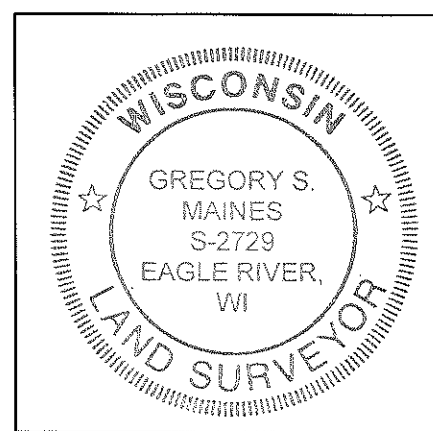
⊕ 3/4" X 30" IRON REBAR WITH LINCOLN CO. ALUM. CAP SET

SKETCH IS NOT TO SCALE
 DISTANCES TO BT'S ARE TO NAIL IN SIDE

CERTIFICATION

I GREGORY S. MAINES, REGISTERED LAND SURVEYOR NO. 2729, HEREBY CERTIFY THAT THE CORNER LOCATION ON THIS RECORD WAS REFERENCED BY ME OR UNDER MY DIRECTION AND CONTROL AND THAT THIS U.S. PUBLIC LAND SURVEY MONUMENT RECORD IS COMPLETE TO THE BEST OF MY KNOWLEDGE AND BELIEF.

Gregory S. Maines 1/26/2012
 SIGNATURE



INDEX NO. I-17

SOUTHEAST CORNER - SECTION 10, T 34 N, R 4 E

OVERVIEW



MONUMENT SET



FACING NORTH



SOUTHEAST CORNER - SECTION 10, T 34 N, R 4 E

FACING EAST



FACING SOUTH



FACING WEST

