

U.S. PUBLIC LAND SURVEY MONUMENT RECORD

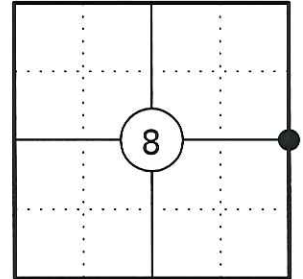
NOTE: THIS FORM IS INTENDED AND DESIGNED TO FULFILL ALL REQUIREMENTS OF WISCONSIN ADMINISTRATIVE CODE CHAPTER A-E 7.08 U.S. PUBLIC LAND SURVEY MONUMENT RECORD (3) (a)(b)(c)(d)(e)(f)(g)(h)(i). AN ADDITIONAL SHEET MAY BE ADDED IF NECESSARY TO CONFIRM WITH SAID REQUIREMENTS.

(a) CORNER LOCATION:

EAST 1/4 CORNER OF SECTION 8
TOWNSHIP 34 NORTH
RANGE 4 EAST
TOWN OF TOMAHAWK
COUNTY OF LINCOLN

LINCOLN COUNTY COORDINATES:

N: 219346.91
E: 312382.60



(b) HISTORY OF ORIGINAL CORNER:

ORIGINAL SURVEYOR: EDWARD D. PALMER
DATE OF SURVEY: APRIL 1865

ORIGINAL BEARING TREES: 4" FIR - S37°W, 5 LKS
10" HEMLOCK - N68°E, 33 LKS

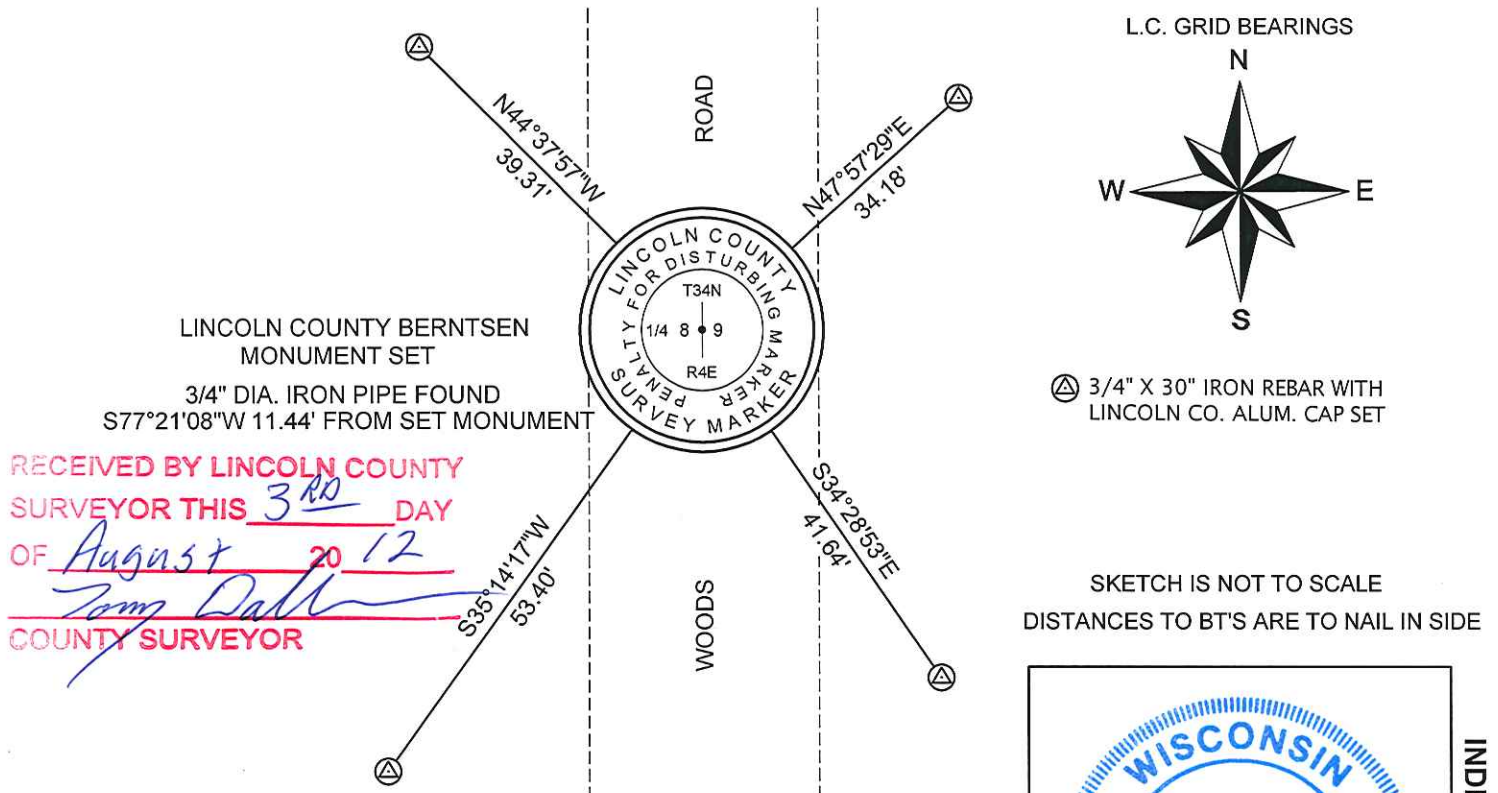
(f)(g)(h) DESCRIPTION OF MONUMENT FOUND AT THIS CORNER AND IF IT WAS ACCEPTED STATE ALL EVIDENCE (MATERIAL, TESTIMONIAL, OCCUPATIONAL, PLATS, RECORDS, OTHER MONUMENTS) USED AS A BASIS FOR ESTABLISHING LOCATION. IF REESTABLISHING THROUGH LOST CORNER PROPORTIONATE METHODS, INDICATE ALL MONUMENTS, DISTANCES, AND DIRECTIONS USED TO ESTABLISH. INDICATE TYPE OF MONUMENT AND SIGN POST FOUND OR SET.

1865: EDWARD D. PALMER SET THE ORIGINAL 1/4 CORNER POST.

03/06/1987: WILLIAM STUTH PREPARED A MAP OF A 1971 SURVEY PERFORMED BY OWENS-ILLINOIS AND SHOWS THE CORNER AS A CORNER BY OTHERS IN A ROAD 39.90 CH. NORTH OF THE SE CORNER OF SEC. 8.

05/29/2012: I FOUND A 3/4" DIA. IRON PIPE ON THE WEST SIDE OF AN EXISTING ROAD NEAR THE CORNER LOCATION. THE O.I. MAP, THE PROPERTY OWNER TO THE WEST AND PLAT BOOKS GOING BACK TO THE EARLY 1900'S ALL CALL FOR THE CORNER IN THE CENTER OF THE ROAD. I DETERMINED THE 3/4" DIA. PIPE WAS MOST LIKELY SET AS A WITNESS TO THE ACTUAL CORNER. I POSITIONED THE CORNER BY SINGLE PROPORTION USING THE NE AND SE CORNERS OF SEC. 8 AND ADJUSTED THE CORNER DUE EAST TO FIT THE CENTERLINE OF THE EXISTING ROAD. THE MEASURED DISTANCE TO THE SE CORNER OF SEC. 8 CHECKS WITH THE O.I. MAP (2633.82'M VS. 2633.4'R). I SET A LINCOLN COUNTY BERNTSEN MONUMENT 8" BELOW GRADE IN THE CENTER OF THE ROAD AND SET FOUR REFERENCE MONUMENTS TO WITNESS THE CORNER.

(c)(d)(e) PLAN VIEW OF CORNER WITH TIES TO AT LEAST FOUR WITNESSES. IF IN DISAGREEMENT WITH PREVIOUSLY ESTABLISHED CORNER, SHOW THE DISTANCES BETWEEN THE TWO CORNERS AND ALSO INDICATE THE TIE TO THE DISPUTED CORNER.



RECEIVED BY LINCOLN COUNTY
SURVEYOR THIS 3RD DAY
OF August 20 12
Tom Dalk
COUNTY SURVEYOR

CERTIFICATION

I GREGORY S. MAINES, REGISTERED LAND SURVEYOR NO. 2729, HEREBY CERTIFY THAT THE CORNER LOCATION ON THIS RECORD WAS REFERENCED BY ME OR UNDER MY DIRECTION AND CONTROL AND THAT THIS U.S. PUBLIC LAND SURVEY MONUMENT RECORD IS COMPLETE TO THE BEST OF MY KNOWLEDGE AND BELIEF.

Gregory S. Maines 5/29/12
SIGNATURE

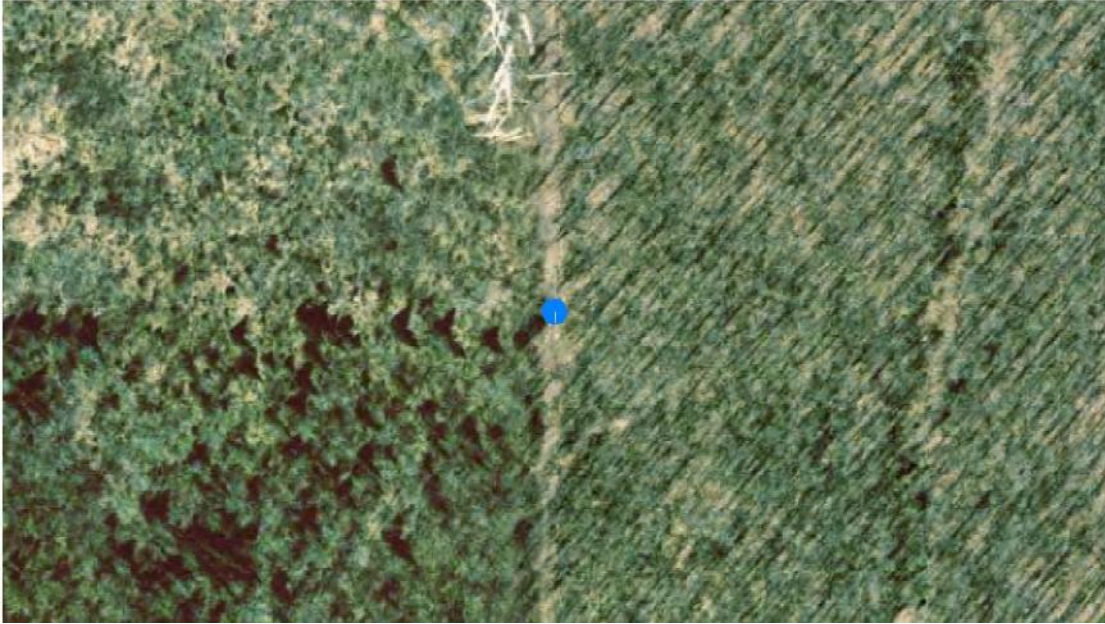


INDEX NO. G-9

SKETCH IS NOT TO SCALE
DISTANCES TO BT'S ARE TO NAIL IN SIDE

EAST 1/4 CORNER - SECTION 8, T 34 N, R 4 E

OVERVIEW



MONUMENT SET



FACING NORTH



EAST 1/4 CORNER - SECTION 8, T 34 N, R 4 E

FACING EAST



FACING SOUTH



FACING WEST

