

# U.S. PUBLIC LAND SURVEY MONUMENT RECORD

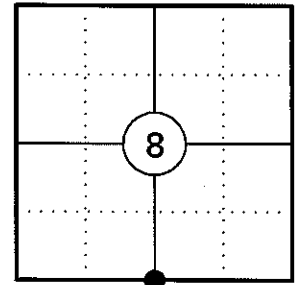
NOTE: THIS FORM IS INTENDED AND DESIGNED TO FULFILL ALL REQUIREMENTS OF WISCONSIN ADMINISTRATIVE CODE CHAPTER A-E 7.08 U.S. PUBLIC LAND SURVEY MONUMENT RECORD (3) (a)(b)(c)(d)(e)(f)(g)(h)(i). AN ADDITIONAL SHEET MAY BE ADDED IF NECESSARY TO CONFIRM WITH SAID REQUIREMENTS.

**(a) CORNER LOCATION:**

SOUTH 1/4 CORNER OF SECTION 8  
 TOWNSHIP 34 NORTH  
 RANGE 4 EAST  
 TOWN OF TOMAHAWK  
 COUNTY OF LINCOLN

**LINCOLN COUNTY COORDINATES:**

N: 216982.53  
 E: 309616.83



**(b) HISTORY OF ORIGINAL CORNER:**

ORIGINAL SURVEYOR: EDWARD D. PALMER  
 DATE OF SURVEY: APRIL 1865

ORIGINAL BEARING TREES: 9" HEMLOCK - N30°W, 30 LKS  
 5" FIR - S48°E, 22 LKS

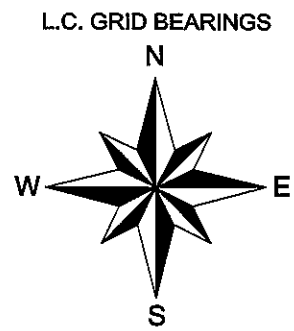
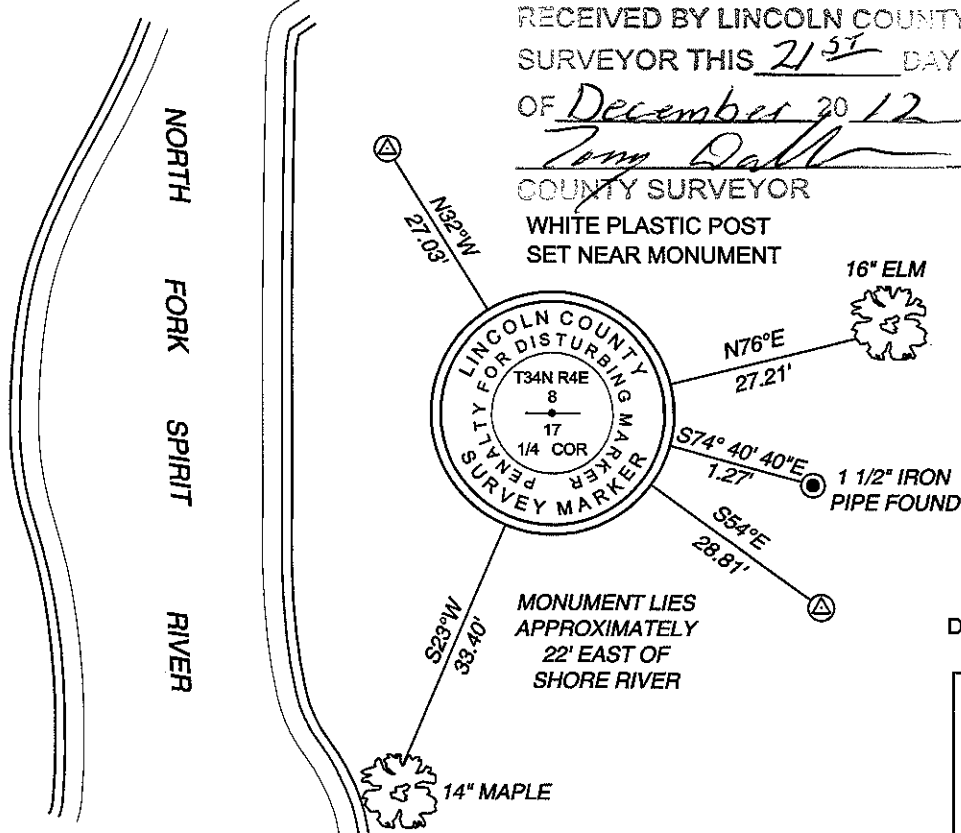
**(f)(g)(h) DESCRIPTION OF MONUMENT FOUND AT THIS CORNER AND IF IT WAS ACCEPTED STATE ALL EVIDENCE (MATERIAL, TESTIMONIAL, OCCUPATIONAL, PLATS, RECORDS, OTHER MONUMENTS) USED AS A BASIS FOR ESTABLISHING LOCATION. IF REESTABLISHING THROUGH LOST CORNER PROPORTIONATE METHODS, INDICATE ALL MONUMENTS, DISTANCES, AND DIRECTIONS USED TO ESTABLISH. INDICATE TYPE OF MONUMENT AND SIGN POST FOUND OR SET.**

1865: EDWARD D. PALMER SET THE ORIGINAL 1/4 CORNER POST.

02/26/1997: LESTER SCHMIT SHOWS A COMPUTED POSITION FOR THE CORNER. (L.C. MAP L216A)

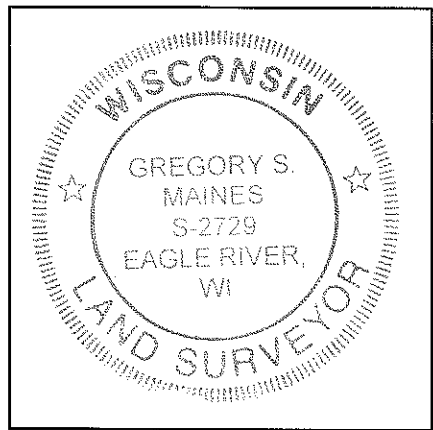
12/03/2012: I FOUND A LINCOLN COUNTY BERNTSEN MONUMENT AT THE CORNER LOCATION ALONG WITH A 1 1/2" IRON PIPE S74°40'40"E, 1.27 FEET. I ACCEPTED THE BERNTSEN MONUMENT AS THE CORNER. I MADE TWO BEARING TREES AND SET TWO REFERENCE MONUMENTS TO WITNESS THE CORNER.

**(c)(d)(e) PLAN VIEW OF CORNER WITH TIES TO AT LEAST FOUR WITNESSES. IF IN DISAGREEMENT WITH PREVIOUSLY ESTABLISHED CORNER, SHOW THE DISTANCES BETWEEN THE TWO CORNERS AND ALSO INDICATE THE TIE TO THE DISPUTED CORNER.**



⊠ 3/4" X 30" IRON REBAR WITH LINCOLN CO. ALUM. CAP SET

SKETCH IS NOT TO SCALE  
 DISTANCES TO BT'S ARE TO NAIL IN SIDE



INDEX NO. I-7

**CERTIFICATION**

I GREGORY S. MAINES, REGISTERED LAND SURVEYOR NO. 2729, HEREBY CERTIFY THAT THE CORNER LOCATION ON THIS RECORD WAS REFERENCED BY ME OR UNDER MY DIRECTION AND CONTROL AND THAT THIS U.S. PUBLIC LAND SURVEY MONUMENT RECORD IS COMPLETE TO THE BEST OF MY KNOWLEDGE AND BELIEF.

*Gregory S. Maines*  
 SIGNATURE