

CERTIFIED LAND CORNER RESTORATION

Index No. G-5

State of Wisconsin }  
County of LINCOLN } ss.

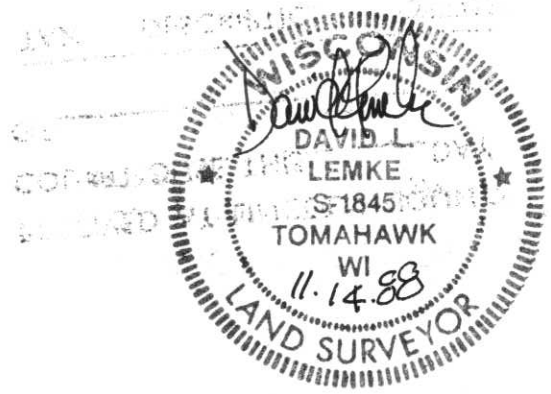
I DAVID L. LEMKE, do hereby certify that on the 14<sup>th</sup> day of NOVEMBER, 1988, I found evidence of the EAST 1/4 corner of SECTION 7 Township 34, North, Range 4 EAST, Fourth Principal Meridian, as described hereon; and that from this evidence I established a new monument and accessories as described hereon to perpetuate the original location of this corner.

Resident witnesses:

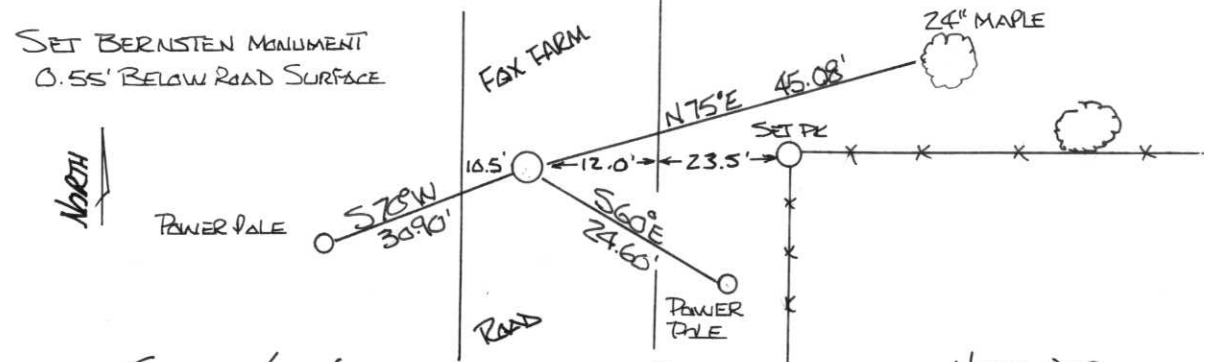
EUGENE EMMERICH

History of original corner establishment:  
POST SET BY EDWARD PALMER APRIL 20, 1865  
IRON POST SET BY A. KOEDICK AUG. 20, 1966

Description of corner evidence found:



Description of monument and accessories I established to perpetuate the original location of this corner.



Dated at TOMAHAWK, Wis., this 16 day of NOVEMBER, 1988

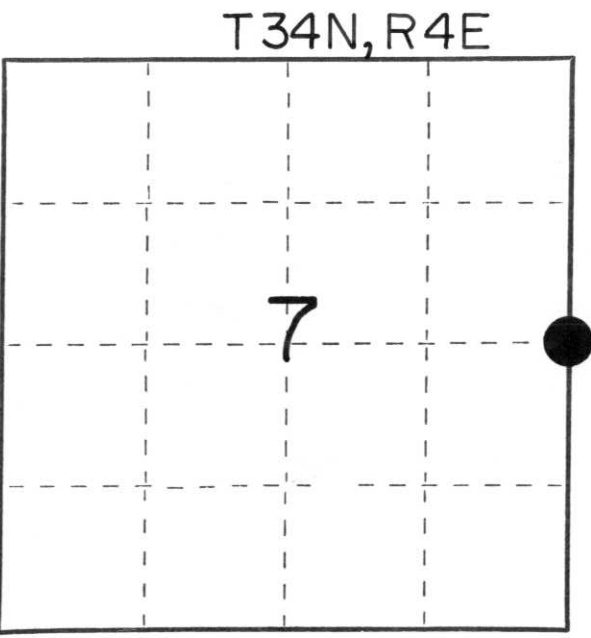
Signature David L. Lemke Title REGISTERED LAND SURVEYOR Registration No. S-1845  
(County Surveyor, Registered Land Surveyor, or other duly authorized official)

Office of Register of Deeds, County of \_\_\_\_\_, I hereby certify that the within instrument was filed in this office for record on the \_\_\_\_\_ day of \_\_\_\_\_, 19\_\_\_\_ at \_\_\_\_\_ o'clock \_\_\_\_\_ M.

(Register of Deeds)

By \_\_\_\_\_ Deputy

Stock No. 26272  
FORM 985  
H.C. Miller Company



○ = Corner monument restored.